

ETSI TS 123 140 V3.1.0 (2002-06)

Technical Specification

**Digital cellular telecommunications system (Phase 2+);
Universal Mobile Telecommunications System (UMTS);
Multimedia Messaging Service (MMS);
Functional description;
Stage 2
(3GPP TS 23.140 version 3.1.0 Release 1999)**



Reference

RTS/TSGT-0223140v310

Keywords

GSM, UMTS

ETSI

650 Route des Lucioles
F-06921 Sophia Antipolis Cedex - FRANCE

Tel.: +33 4 92 94 42 00 Fax: +33 4 93 65 47 16

Siret N° 348 623 562 00017 - NAF 742 C
Association à but non lucratif enregistrée à la
Sous-Préfecture de Grasse (06) N° 7803/88

Important notice

Individual copies of the present document can be downloaded from:

<http://www.etsi.org>

The present document may be made available in more than one electronic version or in print. In any case of existing or perceived difference in contents between such versions, the reference version is the Portable Document Format (PDF). In case of dispute, the reference shall be the printing on ETSI printers of the PDF version kept on a specific network drive within ETSI Secretariat.

Users of the present document should be aware that the document may be subject to revision or change of status. Information on the current status of this and other ETSI documents is available at

<http://portal.etsi.org/tb/status/status.asp>

If you find errors in the present document, send your comment to:

editor@etsi.fr

Copyright Notification

No part may be reproduced except as authorized by written permission.
The copyright and the foregoing restriction extend to reproduction in all media.

© European Telecommunications Standards Institute 2002.
All rights reserved.

DECTTM, **PLUGTESTS**TM and **UMTS**TM are Trade Marks of ETSI registered for the benefit of its Members.
TIPHONTM and the **TIPHON logo** are Trade Marks currently being registered by ETSI for the benefit of its Members.
3GPPTM is a Trade Mark of ETSI registered for the benefit of its Members and of the 3GPP Organizational Partners.

Intellectual Property Rights

IPRs essential or potentially essential to the present document may have been declared to ETSI. The information pertaining to these essential IPRs, if any, is publicly available for **ETSI members and non-members**, and can be found in ETSI SR 000 314: "*Intellectual Property Rights (IPRs); Essential, or potentially Essential, IPRs notified to ETSI in respect of ETSI standards*", which is available from the ETSI Secretariat. Latest updates are available on the ETSI Web server (<http://webapp.etsi.org/IPR/home.asp>).

Pursuant to the ETSI IPR Policy, no investigation, including IPR searches, has been carried out by ETSI. No guarantee can be given as to the existence of other IPRs not referenced in ETSI SR 000 314 (or the updates on the ETSI Web server) which are, or may be, or may become, essential to the present document.

Foreword

This Technical Specification (TS) has been produced by ETSI 3rd Generation Partnership Project (3GPP).

The present document may refer to technical specifications or reports using their 3GPP identities, UMTS identities or GSM identities. These should be interpreted as being references to the corresponding ETSI deliverables.

The cross reference between GSM, UMTS, 3GPP and ETSI identities can be found under www.etsi.org/key.

Contents

Intellectual Property Rights	2
Foreword.....	2
Foreword.....	4
1 Scope	5
2 References	5
3 Abbreviations	6
4 General Architecture	8
4.1 Overview	8
4.2 Involved MMS Elements.....	9
4.3 Protocol Framework	10
4.4 Addressing.....	10
5 Functional Description of Involved MMS Elements.....	11
5.1 MMS User Agent	11
5.1.1 MMS User Agent operations	11
5.1.2 Minimum set of supported formats.....	11
5.2 MMS Server	12
5.3 MMS Relay	12
5.4 MMS User databases.....	12
6 MMSE Interfaces	13
6.1 Involved MMSE Interfaces	13
6.2 MMS Relay – MMS User Agent.....	13
6.3 MMS Relay – MMS Server.....	13
6.4 MMS Relay – MMS User Databases	13
6.5 MMS Relay – HLR	14
6.6 Interworking of different MMSEs.....	14
7 WAP Implementation of MMS	14
7.1 WAP Protocol Framework	14
7.2 WAP Architectural Support for MMS.....	15
7.3 WAP Transaction Flows Supporting MMS.....	16
7.4 Terminal Capability Negotiation.....	17
7.5 MMS Message Contents	17
7.5.1 Multimedia Messages	17
7.5.2 Other Messages.....	17
7.6 MMS Presentation.....	17
7.7 MMS Security Model between MMS User Agent and MMS Relay	18
Annex A (Informative): Examples of MMS architectural implementations	19
A.1 Introduction	19
A.2 Example of combined MMS-Relay/MMS-Server.....	19
A.3 Example of non-combined MMS-Relay and MMS-Server.....	20
A.4 Example of MMS interaction with T.30 Facsimile Services.....	21
A.5 Example of MMS interaction with 2G/3G Voice Mailboxes.....	21
A.6 Example of interaction with Internet E-Mail Messaging	23
A.7 Example of interaction with Short Message Service, SMS.....	24
Annex B (Informative): Change history	25
History	26

Foreword

This Technical Specification (TS) has been produced by the 3rd Generation Partnership Project (3GPP).

The contents of the present document are subject to continuing work within the TSG and may change following formal TSG approval. Should the TSG modify the contents of the present document, it will be re-released by the TSG with an identifying change of release date and an increase in version number as follows:

Version x.y.z

where:

- x the first digit:
 - 1 presented to TSG for information;
 - 2 presented to TSG for approval;
 - 3 or greater indicates TSG approved document under change control.
- y the second digit is incremented for all changes of substance, i.e. technical enhancements, corrections, updates, etc.
- z the third digit is incremented when editorial only changes have been incorporated in the document.

1 Scope

The present document defines the stage 2 and stage 3 description of the non realtime Multimedia Messaging Service, MMS. Stage 2 identifies the functional capabilities and information flows needed to support the service described in stage 1.

The present document includes information applicable to network operators, service providers and terminal, switch and database manufacturers.

The present document contains the core functions for a non realtime Multimedia Messaging Service, MMS, which are sufficient to provide a basic service.

MMS uses a number of technologies to realise the requirements of the stage 1 description (3G TS 22.140) [1]. The present document describes how the service requirements are realised with the selected technologies. As far as possible existing protocols (e.g. WAP, SMTP, ESMTP as transfer protocols; lower layers to provide push, pull, notification) and existing message formats (e.g. SMIL, MIME) shall be used for the realisation of the Multimedia Messaging Service.

This specification serves as a foundation for the development of MMS for release 99. It describes a new service which has no direct equivalent in the previous ETSI/GSM world or in the fixed network world. In consequence readers may find that certain aspects are not clearly defined or open to misinterpretation. Where any such case is encountered it is essential that the issue is brought to the 3GPP TSG T2 standards body (see page 2 for contact information) for discussion and resolution in order to provide interoperable implementations in release 99.

2 References

The following documents contain provisions which, through reference in this text, constitute provisions of the present document.

- References are either specific (identified by date of publication, edition number, version number, etc.) or non-specific.
- For a specific reference, subsequent revisions do not apply.
- For a non-specific reference, the latest version applies.

- [1] 3G TS 22.140: "Multimedia Messaging Service".
- [2] 3G TR 21.905: "Vocabulary for 3GPP Specifications".
- [3] "Wireless Application Environment Specification", WAP Forum, April 30th, 1998. URL: <http://www.wapforum.org/>.
- [4] 3G TS 23.057: "Mobile Station Application Execution Environment".
- [5] RFC 822 Standard for the format of ARPA Internet text messages, IETF.
- [6] RFC 2046 Multipurpose Internet Mail extension (MIME) Part Two: Media Types, IETF.
- [7] "The Unicode Standard", Version 2.0, Unicode Consortium, Addison-Wesley Dev. Press, 1996.
- [8] US-ASCII: "Coded Character Set 7 Bit; American Standard Code for Information Interchange"; ANSI X3.4, 1986.
- [9] ISO-8859-1 (1987): "Information Processing - 8-bit Single-Byte Coded Graphic Character Sets; Part 1: Latin Alphabet No. 1".
- [10] RFC 2279, "UTF-8, A Transformation format of ISO 10646", IETF.
- [11] 3G TS 24.011: "Point-to-Point (PP) Short Message Service (SMS) support on mobile radio interface".

- [12] 3G TS 26.090: "AMR Speech Codec Speech Transcoding Functions". 3G TS 26.093 (V3.1.0): "AMR Speech Codec; Source Controlled Rate Operation".
- [13] 3G TS 26.101: "Mandatory Speech Codec speech processing functions"; AMR Speech Codec Frame Structure.
- [14] MP3, MPEG1-Audio ISO/IEC 11172-3, MPEG2-Audio ISO/IEC 11172-3.
- [15] MIDI SDS, International Midi Association, 5316 West 57th Street, Los Angeles, CA 90056, (415) 321-MIDI.
- [16] WAV: Waveform Audio File Format, MIME Sub-type Registration www.ietf.org
- [17] JPEG Draft Standard ISO 10918-1 CD.
- [18] Graphics Interchange Format (Version 89a), CompuServe, Inc., Columbus, Ohio, 1990.
- [19] ISO/IEC 14496-1 (1999): Information Technology - Generic Coding of Audio-Visual Objects - Part 1: Systems. ISO/IEC 14496-2 (1999): Information Technology - Generic Coding of Audio-Visual Objects - Part 2: Visual.
- [20] ITU-T Recommendation H.263 (1998): "Video coding for low bit rate communication".
- [21] Quick-Time. URL: <http://www.apple.com>.
- [22] RFC 821 "Simple Mail Transfer Protocol", IETF.
- [23] "WAP Wireless Session Protocol", WAP Forum, November 1999. URL: <http://www.wapforum.org/>.
- [24] "WAP Push Access Protocol", WAP Forum, November 1999. URL: <http://www.wapforum.org/>.
- [25] "WAP User Agent Profile", WAP Forum, November 1999. URL: <http://www.wapforum.org>.
- [26] "Resource Description Framework (RDF) Model and Syntax Specification", W3C Recommendation, 2/99. URL: <http://www.w3c.org/TR/1999/PR-rdf-syntax-19990105>.
- [27] "WAP Wireless Markup Language 1.2", November 1999. URL: <http://www.wapforum.org>.
- [28] Synchronized Multimedia Integration Language (SMIL) 1.0 Specification - <http://www.w3.org/TR/smil-boston/>.
- [29] "WAP Wireless Transport Layer Security", November 1999. URL: <http://www.wapforum.org>.
- [30] "WAP Identity Module", November 1999. URL: <http://www.wapforum.org>.
- [31] ITU-T Recommendation T.37 (06/98): "Procedures for the transfer of facsimile data via store-and-forward on the Internet".
- [32] ITU-T Recommendation T.30 (1996): "Procedures for document facsimile transmission in the general switched telephone network".
- [33] RFC 2421 (Sept. 1998): Voice Profile for Internet Mail – version 2, VPIM.
- [34] RFC 1957 POP 3.
- [35] RFC 1730 (December 1994): Internet Message Access Protocol Version 4, IETF.
- [36] Tag Image File Format (TIFF) Version 6: Adobe Systems, <http://www.adobe.com>.
- [37] SMPP Developers' Forum (Oct. 99), Short Message Peer-to-Peer Protocol Specification, v.3.4.

3 Abbreviations

For the purposes of the present document, the following abbreviations apply in addition to those defined in [1] and [2]:

EMA	Electronic Message Association
E-Mail	Electronic Mail
HTTP	Hypertext Transfer Protocol
IANA	Internet Assigned Numbering Authority
IETF	Internet Engineering Task Force
IMAP4	Internet Message Access Protocol
GW	Gateway
MIME	Multipurpose Internet Mail Extensions
MM	Multimedia Message
MMSE	Multimedia Message Service Environment
MMS	Multimedia Messaging Service
MTA	Mail Transfer Agent
PDU	Protocol Data Unit
POP3	Post Office Protocol Version 3
RDF	Resource Description Format
RFC	Request for Comments
SMIL	Synchronised Multimedia Integration Language
SMPP	Short Message Peer-to-Peer Protocol
SMTP	Simple Mail Transfer Protocol
UA	User Agent
UAProf	User Agent Profile
URI	Uniform Resource Identifiers
VPIM	Voice Profile for Internet Mail
W3C	WWW Consortium
WAP	Wireless Application Protocol
WIM	WAP Identity Module
WML	Wireless Markup Language
WSP	WAP Session Protocol
WTLS	Wireless Transport Layer Security

4 General Architecture

4.1 Overview

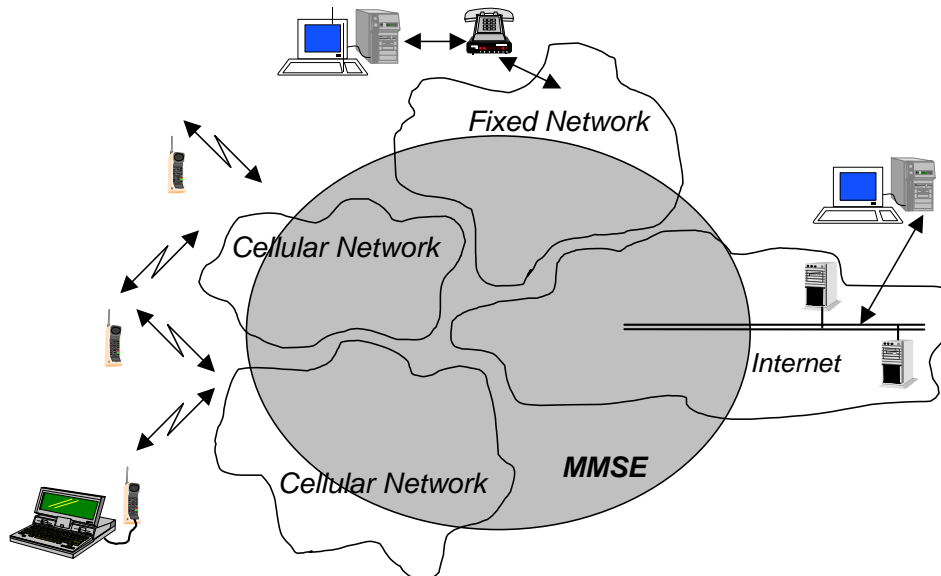


Figure 1: General view of MMS provision within the different networks

Figure 1 shows a generalised view of the Multimedia Message Service architecture for a third generation messaging system. It shall combine different networks and network types and shall integrate messaging systems already existent within these networks. The terminal operates with the Multimedia Messaging Service Environment, MMSE. This environment may comprise 2G and 3G networks, 3G networks with islands of coverage within a 2G network and roamed networks. The MMSE provides all the necessary service elements, e.g. delivery, storage and notification functionality. These service elements may be located within one network or distributed across several networks or network types.

4.2 Involved MMS Elements

Figure 2 shows that multimedia messaging may encompass many different network types. The basis of connectivity between these different networks shall be provided by the Internet protocol and its associated set of messaging protocols. This approach enables messaging in 2G and 3G wireless networks to be compatible with messaging systems found on the Internet.

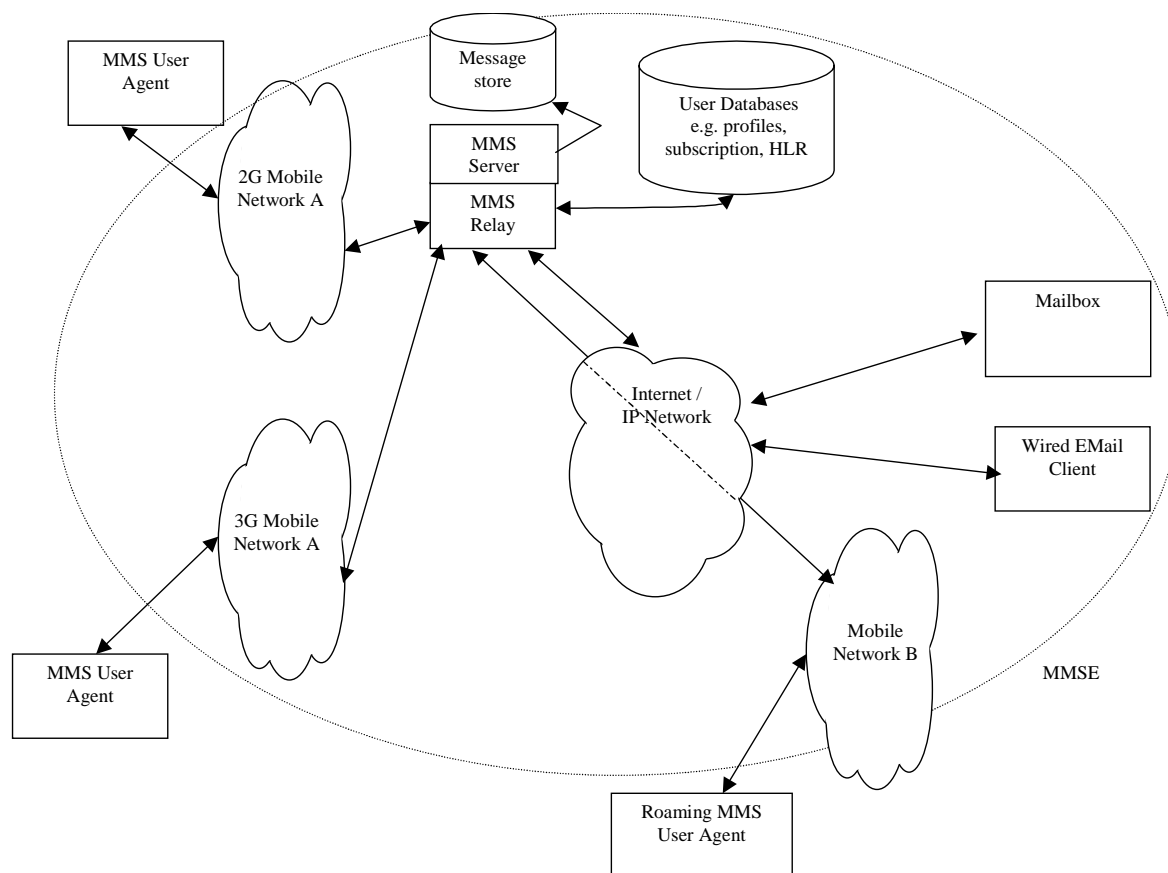


Figure 2: MMS Architectural Elements

MMSE

The Multimedia Message Service Environment encompasses all the various elements that provide a complete MMS to a user. In the case of roaming the visited network is considered a part of that user's MMSE. However, subscribers to the mobile network B are considered to be a part of a separate MMSE.

MMS Relay and MMS Server

The MMS Server is responsible for storage and handling of incoming and outgoing messages. Associated with the MMS Server, is the MMS Relay which is responsible for the transfer of messages between different messaging systems. Depending on the business model, the MMS Server and the MMS Relay may be combined, separate or distributed across different domains.

The MMS Relay should be able to generate charging data (CDR) when receiving MMs or when delivering MMs to the MMS User Agent or to another MMSE.

MMS User Databases

This element may be comprised of one or more entities that contain user related information such as subscription and configuration (e.g. user profile, HLR).

MMS User Agent

The User Agent resides on a UE or on an external device connected to a UE. It is an application layer function that provides the users with the ability to view, compose and handle MMs (e.g. sending, receiving, deleting of MMs).

4.3 Protocol Framework

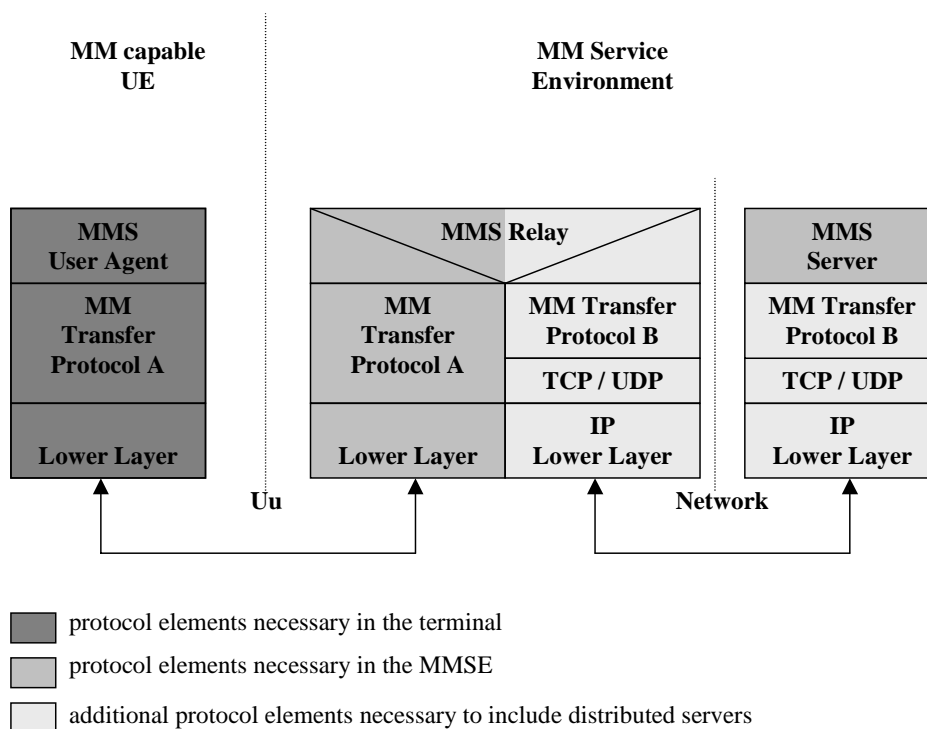


Figure 3: Protocol Framework to provide MMS

To provide implementation flexibility, integration of existing and new services together with interoperability across different networks and terminals, the MMS shall make use of the protocol framework outlined in figure 3. In this framework the MMS User agent communicates through the MMS Relay with the MMS Server. This MMS Relay shall provide convergence functionality between server and MMS user agent and thus enabling the integration of different server types across different networks. It should be possible to combine Server and Relay functionality.

Details for implementation of the MM transfer protocol A using WAP [3] or applications conforming to MExE [4] (e.g. Java and TCP/IP) are elaborated within this specification. The WAP implementation option is described in clause 7. Implementations based on applications using MExE may be defined in detail in future releases. Other implementations (e.g. using other standardised Internet protocols) are not defined in this specification in this release.

4.4 Addressing

MMS shall support the use of E-Mail addresses (RFC 822) [5] or MSISDN to address the recipient of a MM. In the case of E-Mail addresses standard internet message routing should be used.

The usage of MSISDN for addressing a recipient in a different MMS service providers domain shall be possible. For that the need of MSISDN translation to a routable address has been identified. The mapping for the MSISDN to the correct recipient's MMS Relay or Server is left for standardisation in future releases. In the mean time, it is expected that MMS service providers or network operators will develop solutions for their particular needs which may include static tables or other look-up methods.

Extensibility of the addressing framework is the goal and the specific mechanism is left for future releases.

5 Functional Description of Involved MMS Elements

5.1 MMS User Agent

5.1.1 MMS User Agent operations

The MMS User Agent shall provide the following application layer functionalities:-

- the MM composition;
- the MM presentation;
- the presentation of notifications to the user;
- the retrieval of MMs (initiate MM delivery to the User Agent).

The MMS User Agent may provide additional application layer functionalities such as:-

- the signing of an MM on an end-user to end-user basis;
- the decryption and encryption of a MM on an end-user to end-user basis;
- all aspects of storing MMs on the terminal and/or USIM;
- the handling of external devices;
- the user profile management.

This optional list of additional functionalities of the MMS User Agent is not exhaustive.

5.1.2 Minimum set of supported formats

Multiple media elements shall be combined into a composite single MM using MIME multipart format as defined in RFC 2046 [6]. The media type of a single MM element shall be identified by its appropriate MIME type whereas the media format shall be indicated by its appropriate MIME subtype.

In order to guarantee a minimum support and compatibility between multimedia messaging capable terminals, the following media formats shall be at least supported.

Minimum set of supported media type Text formats:-

- plain text. Any character encoding (charset) that contains a subset of the logical characters in Unicode [7] shall be used (e.g. US-ASCII [8], ISO-8859-1[9], UTF-8[10], Shift_JIS, etc.).

Unrecognised subtypes of "text" shall be treated as subtype "plain" as long as the MIME implementation knows how to handle the charset. Any other unrecognised subtype and unrecognised charset shall be treated as "application/octet - stream".

In order to guarantee SMS interoperability, SMS 3G TS 24.011 [11] RP-DATA RPDU encapsulation defined in subclause 7.3.1 shall be supported. MIME type application/vnd.3gpp.sms shall be used for this purpose. In order to maintain backward compatibility, MIME type "application/x-sms" shall be supported by the MMS UA for mobile-terminated messages only.

To ensure interoperability with formats widely used e.g. in the internet community the support of the following formats or codecs is suggested:-

Suggested formats or codecs for media type Audio:-

- AMR [12]/ EFR; organised in octet format as specified in 3G TS 26.101 and 3G TS 26.101 Annex A [13]
- MP3 [14]
- MIDI [15]
- WAV [16]

Suggested formats or codecs for media type Image:-

- JPEG [17].
- GIF 89a [18].

Suggested formats or codecs for media type Video:-

- MPEG 4 (Visual Simple Profile, Level 1) [19].
- ITU-T H.263 [20].
- Quicktime [21].

5.2 MMS Server

The MMS Server is responsible for storage and handling of messages. Several Servers can be included within an MMSE, e.g. MMS-Server, E-Mail Server, SMS Server (SMSC), Fax.

NOTE: Several Examples can be found in Annex A.

5.3 MMS Relay

This MMS Relay shall provide convergence functionality between server and user agent and thus enable the integration of different server types across different networks. It should be possible to combine Server and Relay functionality.

The MMS Relay is responsible for the following functions:-

- receiving and sending MM;
- enabling/disabling MMS function;
- personalising MMS based on user profile information;
- MM deletion based on user profile or filtering information;
- media type conversion;
- media format conversion;
- message content retrieval;
- MM forwarding;
- screening of MM;
- negotiation of terminal capabilities;
- checking terminal availability;
- MM notification to the MMS User Agent;
- generating charging data records (CDR);
- address translation.

5.4 MMS User databases

The MMS User databases may consist of e.g. user profile database, subscription database, HLR.

The MMS User databases shall provide:-

- MMS user subscription information;
- information for the control of access to the MMS;
- information for the control of the extent of available service capability (e.g. server storage space);

- a set of rules how to handle incoming messages and their delivery;
- information of the current capabilities of the users terminal.

NOTE: The location of the User Databases and the access to them are out of the scope of Release 99.

6 MMSE Interfaces

6.1 Involved MMSE Interfaces

Figure 4 shows the Involved MMSE Interfaces that are further described below.

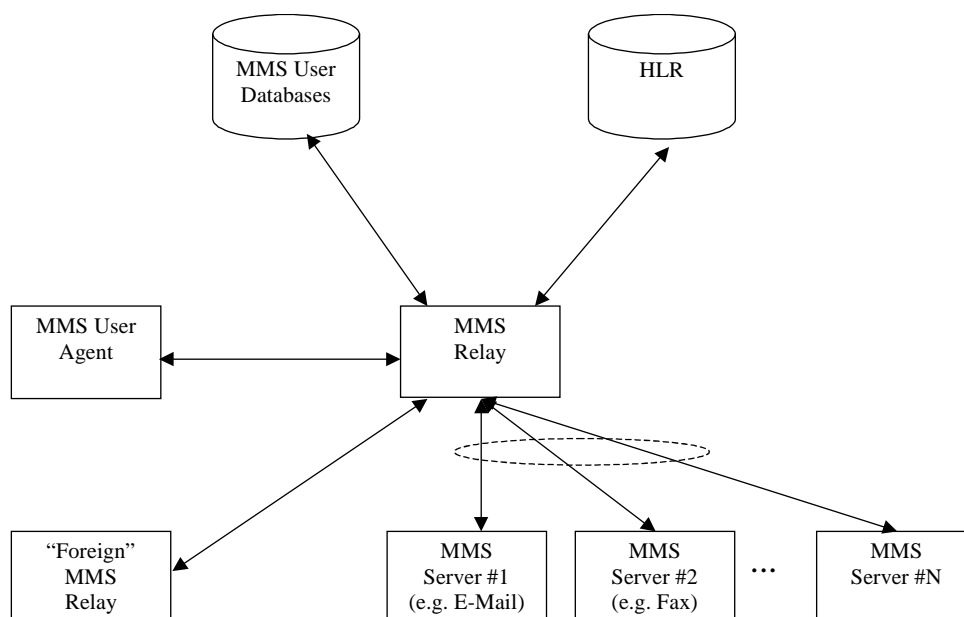


Figure 4: MMSE Interfaces

6.2 MMS Relay – MMS User Agent

Details for implementation of the MM transfer protocol A using WAP [3] or applications conforming to MExE [4] (e.g. Java and TCP/IP) are elaborated within this specification. The WAP implementation option is described in clause 7. Implementations based on applications using MExE may be defined in detail in future releases. Other implementations (e.g. using other standardised Internet protocols) are not defined in this specification in this release.

6.3 MMS Relay – MMS Server

This interface shall be based upon existing standards e.g. HTTP or SMTP. Several examples of the MMS Relay and MMS Server interfaces can be found in Annex A.

Where the MMS-Relay and MMS-Server are wholly integrated then the interface is outside the scope of the specification.

NOTE: In future releases that separation of MMS Relay and MMS Server from a functional prospective may be defined. At that time architectural and protocol information is to be provided.

6.4 MMS Relay – MMS User Databases

This interface is outside the scope of this specification.

6.5 MMS Relay – HLR

This interface may be used to provide information to the MMS Relay about the subscriber. If this interface is provisioned then it shall use existing MAP operations (e.g. procedures for determining the location of the mobile, procedures for alerting SMS service centres). Future releases may elaborate this area further.

In case of using SMS as the bearer for notification this interface is not necessary.

6.6 Interworking of different MMSEs

The MMS Relay – MMS Relay interface is used to transfer MMs between different MMSEs. Interworking between different MMSEs shall be based on SMTP according to RFC 821 [22] as depicted in figure 5.

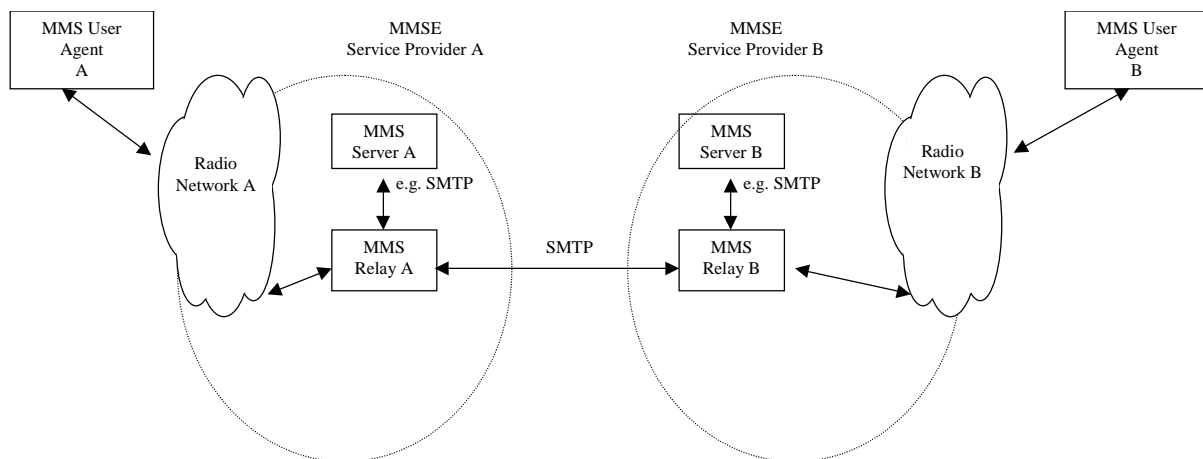


Figure 5: Interworking of different MMSEs

All elements of an MM shall be included within a single SMTP message which shall be organised as MIME type application/multipart. All MM elements shall be of standard MIME content types including the MMS header.

This MMS header shall be of registered MIME application class content type. It shall be sent as a distinct part of the SMTP message. In addition to this all header fields but the MMS specific header fields shall be copied into the SMTP message's header fields.

When conveying an MM the MMS header part shall not be the primary part in the MIME so that non-MMS-aware readers can view this part as merely an attachment. This will minimise problems with presentations of the MM data by these readers.

NOTE: Content type application/mmsheader is subject to registration within IANA. In the mean time content type application/x-mmsheader shall be used to indicate the MMS header.

NOTE: Private agreements may utilise additional connection and security (e.g. IPSec) methods. Such methods are out of the scope of standardisation for R'99.

7 WAP Implementation of MMS

WAP provides significant support for MMS, both in direct service specification and in the underlying technologies. While the WAP MMS service specification work is new and is therefore unavailable for direct reference, its basic approach and limitations are based on WAP documents describing MMS architecture and message encapsulation. This should be done based on the underlying WAP technologies that have been published, and can therefore be referenced.

7.1 WAP Protocol Framework

In reference to subclause 4.3, the protocol framework applied to WAP implementation of MMS is provided in figure 6.

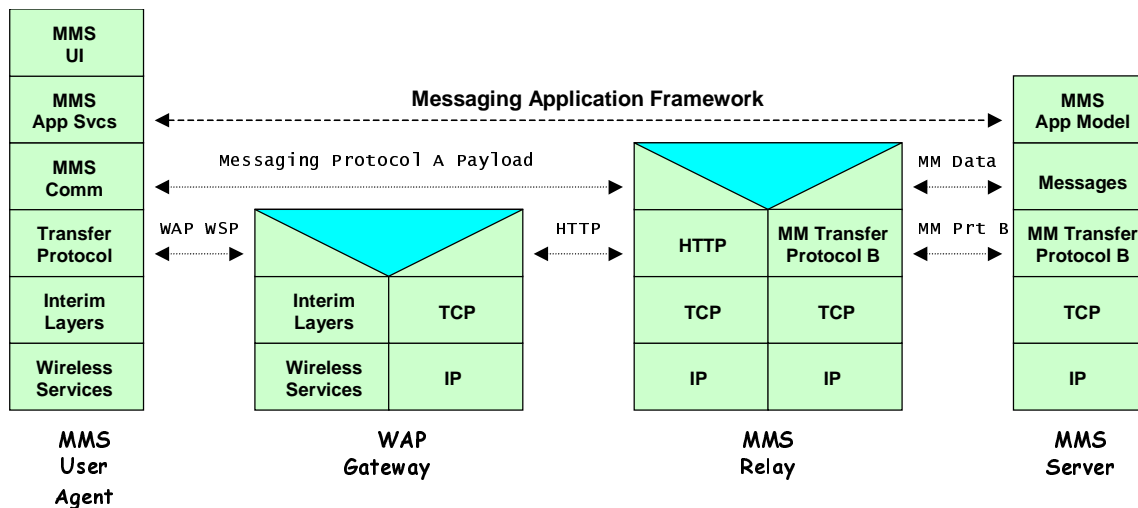


Figure 6: Protocol Framework applied to WAP implementation of MMS

7.2 WAP Architectural Support for MMS

WAP support for MMS is based upon the services of its supporting technology. Therefore, the scope of WAP, as it addresses MMS, is as shown in figure 7. It does not cover activities or network elements beyond those shown and no such dependencies or expectations should be inferred or implied.

Figure 7 shows an MMS Relay which in the WAP architecture's terminology is referred to as an MMS Server. The WAP architecture also refers to the MMS User Agent as an MM Client. These cover equivalent functionalities.

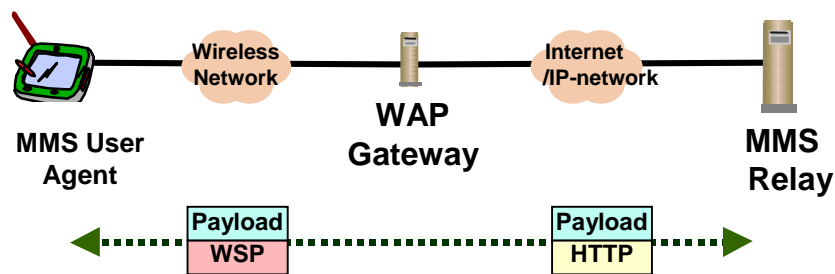


Figure 7: Scope of WAP Support for MMS

Figure 7 shows two links. The first, between the wireless MMS User Agent and the WAP Gateway, is where the "WAP Stack" is used to provide a common set of services over a variety of wireless bearers. For application oriented services, like MMS, the interest is primarily in services offered by WAP Session Protocol (WSP) [23].

The second link connects the WAP Gateway and the MMS Relay. In the WAP architecture the MMS Relay is considered an Origin Server. These entities are connected over an IP network such as the Internet or a local Intranet. HTTP is used for data transfer and data can be originated from either entity.

End-to-end connectivity, for the MMS application, between the wireless MMS User Agent and the MMS Relay is accomplished by sending data over WSP and HTTP. This is accomplished using the WSP/HTTP POST method for data originating at the wireless MMS User Agent and by using the WAP Push Access Protocol [24] in the other direction.

The WAP Gateway, which enables the needed interworking, should not modify the data transfer via these transactions.

The WAP view of MMS is constrained to the interactions between the MMS User Agent and the MMS Relay. It makes no representations as to services that are provided to or required of any other network elements.

7.3 WAP Transaction Flows Supporting MMS

NOTE: The WAP MMS work is ongoing and the descriptions in this section are based upon preliminary material that is expected to remain stable.

The WAP MMS work describes the end-to-end transactions that occur between the MMS User Agent and the MMS Relay. These transactions accomplish the following services:

- MMS User Agent originates a Multimedia Message (MM).
- MMS Relay notification to an MMS User Agent about an available MM.
- MMS User Agent retrieving an MM.
- MMS User Agent support for retrieval acknowledgement to MMS Relay.
- MMS Relay sending delivery report to MMS User Agent.

Figure 8 shows an example transaction flow illustrating a message origination, delivery and delivery report.

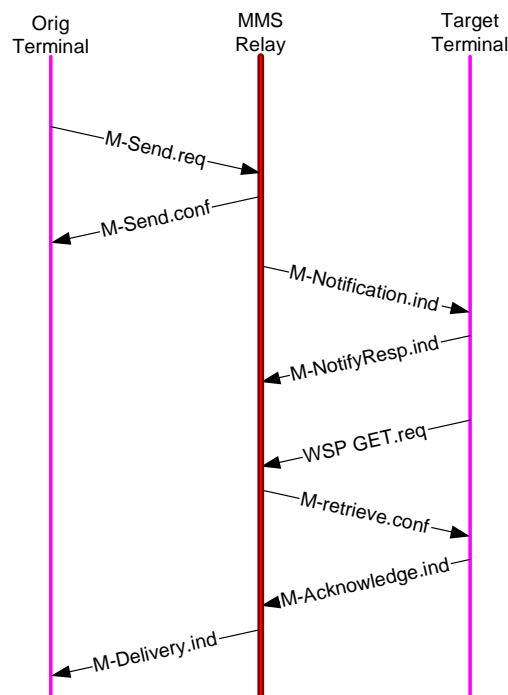


Figure 8: Example MMS Transactional Flow in WAP

The transactions utilise a variety of transport schemes. For example, the MMS User Agent originates an MM by sending a M-Send.req to the MMS Relay by use of a WSP/HTTP POST method. This operation transmits the required data from the MMS User Agent to the MMS Relay as well as provides a transactional context for the resulting M-Send.conf response.

The MMS Relay uses WAP PUSH technology to send the M-Notification.ind to the MMS User Agent. This is how the MMS User Agent is informed of MMs available for retrieval. Included, as a data component, is the URI of the MM that the MMS User Agent is to use for the retrieval.

The retrieval activity is performed by the MMS User Agent using the WSP/HTTP GET method on the URI provided. The fetch of the URI returns the M-retrieve.conf which contains the actual MM to be presented to the user.

The MMS Relay may request information that would permit to know that the MM was actually received by the MMS User Agent. One approach would be for a distinct M-Acknowledge.ind to be passed from the MMS User Agent to the MMS Relay.

The MMS Relay is responsible for supporting an optional delivery report back to the originating MMS User Agent. Based upon possible delivery outcomes, the MMS Relay would again utilise WAP PUSH technology to inform the MMS User Agent with the M-Delivery.ind message.

7.4 Terminal Capability Negotiation

WAP provides a mechanism to inform an origin server, such as the MMS Relay, of the capabilities of the MMS User Agent. This is known as User Agent Profile (UAProf) [25]. It provides information about the characteristics of the display (e.g. size, color support, bit depth), supported content types and network limitations (e.g. max message size).

The UAProf data is encoded in an RDF [26] data description language. It is conveyed, possibly indirectly, when the MMS User Agent performs a WSP/HTTP operation, such as a GET, to an origin server. It is up to the origin server to decode the RDF data, extracting any needed device characteristics, to guide the content generation or filtering operation it performs before returning data to the MMS User Agent.

For MMS, the MMS Relay should be able to utilise the capability information to make adjustments to the delivered MM contents. For example, an MMS Relay may delete a message component if the content type was not supported by the terminal. Alternatively, the MMS Relay may adapt an unsupported content type to adjust the size, color depth or encoding format. WAP makes no requirements to the handling of this data or of any notifications that may be made to the user concerning such adjustments.

7.5 MMS Message Contents

The WAP work on MMS is defining a message encapsulation scheme to convey the data between the MMS User Agent and the MMS Relay.

7.5.1 Multimedia Messages

The MIME multipart technique is standard Internet technique to combine the email body and the attachments together. The WAP has a binary equivalent to this, referenced in [23] which can be used to combine multimedia objects in the multimedia messages together. This approach shall be used for messages between the MMS Relay and MMS User Agent which also include MM components. This includes the message send and retrieve.

The use of the WAP binary multipart structure allows easy conversion between binary format and the Internet MIME multipart. In addition, the binary format allows efficient handling of the message especially in cases when some multimedia objects must be taken out of the structure.

A special, application specific part should contain the MMS header information. This header information is used to provide the message type information as well as message-specific information. The proposed content type for this part is application/mmsheader and until registration within IANA, the interim content type shall be application/x-mmsheader.

7.5.2 Other Messages

Other MMS transactional messages utilise additional PDUs for multimedia message notification, acknowledgements and delivery reports. These messages are conveyed with messages that just utilise a content type proposed to be application/mmsheader. Until registration within IANA, the interim content type shall be application/x-mmsheader.

7.6 MMS Presentation

The rendering of an MM for a user is the ultimate objective of the MMS. This rendering operation is known as presentation. Various types of data may be used to drive the presentation. For example, the MM presentation may be based on a WML deck [27] or Synchronised Multimedia Integration Language (SMIL) [28] which includes links to other component elements in the multipart message. Other presentation models may include a simple text body with image attachments. WAP has not specified any specific requirements on MMS presentations. UAProf [25] content negotiation methods should be used for presentation method selection.

NOTE: In the future, it will be desirable to consider mobile-optimised presentation technologies. For example, WAP Forum and W3C have initiated work on a mobile-optimised version of SMIL that would be suitable for use in an MMS environment.

7.7 MMS Security Model between MMS User Agent and MMS Relay

No MMS-specific requirements are in place within the WAP Forum to support security mechanisms in the transactions between the MMS Relay and MMS User Agent. Existing schemes such as WTLS [29] and WIM [30] are available and other end-to-end techniques are under development.

Annex A (Informative): Examples of MMS architectural implementations

A.1 Introduction

This informative annex is intended to provide architectural examples based on the general architecture as outlined in clause 4 to show implementations for different business models. The focus is upon the various MMS Relay - MMS Server scenarios, whereas the MMS Relay - MMS User Agent interface is assumed to be as stated in subclause 6.2. Each of the following subsubclauses provides only one possible scenario, however a combination could be feasible. Please note that each functional element should be understood as a logical entity and may be combined due to implementation reasons.

A.2 Example of combined MMS-Relay/MMS-Server

This scenario shows the case where the two logical entities, MMS Relay and MMS Server, are combined into a single physical entity.

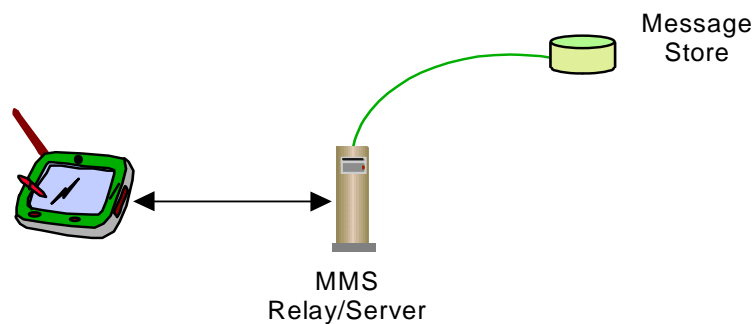


Figure 9: Example of combined MMS-Relay/Server

A.3 Example of non-combined MMS-Relay and MMS-Server

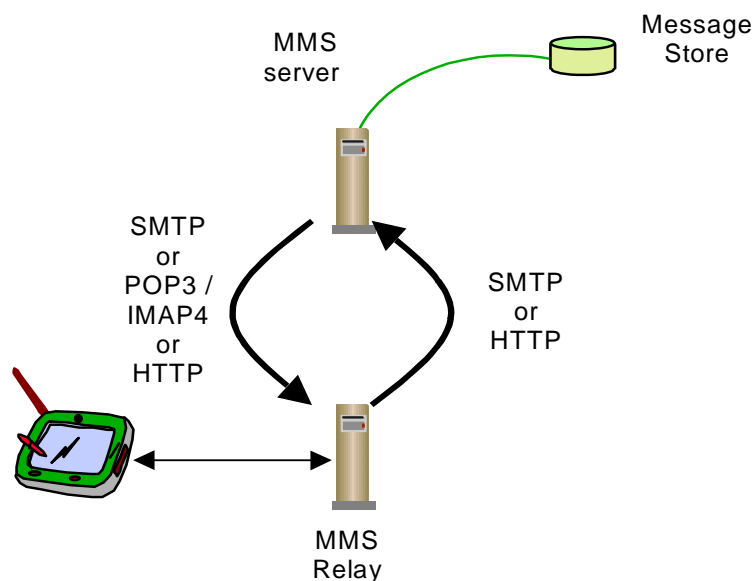


Figure 10: Example of non-combined MMS-Relay and MMS-Server

For the transfer of MMs between an MMS-Relay and an MMS-Server the use of SMTP and POP3[34]/IMAP4[35] or HTTP as illustrated in Figure 10 is identified as appropriate.

If the protocol is SMTP for up- and download of MMs to the server, then it is identical to the one used between different MMS-Relays as specified in the subclause 6.6.

A.4 Example of MMS interaction with T.30 Facsimile Services

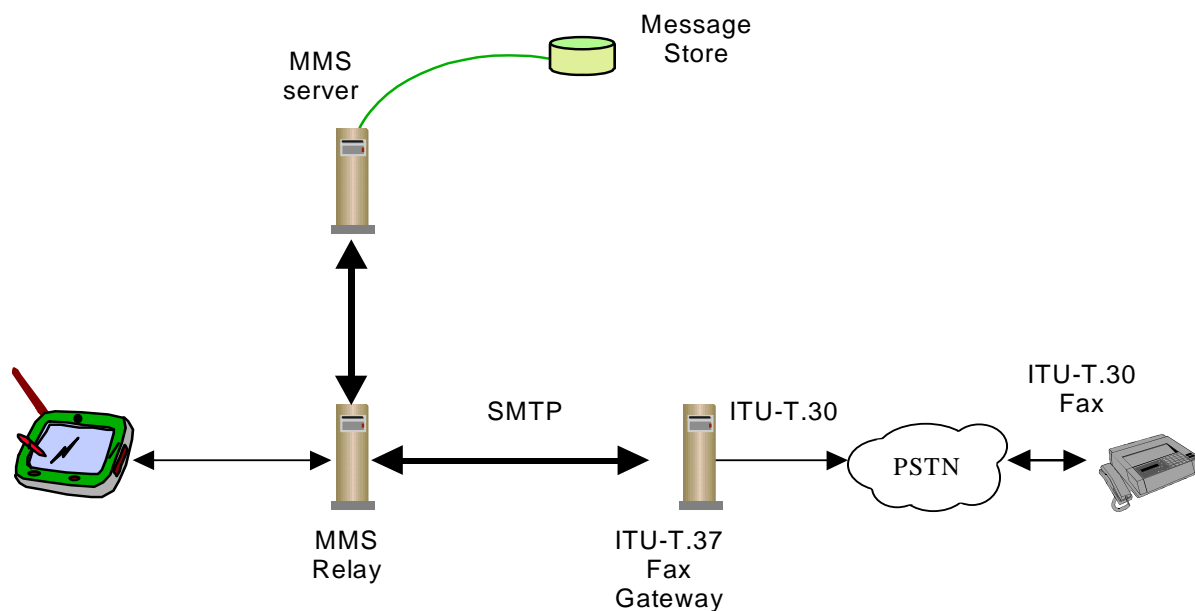


Figure 11: Example of MMS interaction with Facsimile Services based on ITU-T.37

For the transfer of facsimile data via store-and-forward mechanisms ITU-T.37 [31] procedures have been standardised. These are identified as appropriate in the MMS environment for the interworking with T.30 [32] facsimile services. What the relevant MMSE parts are supposed to look like for a T.37 approach is depicted in figure 11. The MMS Relay interfaces with a T.37 Fax Gateway. For the Gateway's communication with the MMS Relay the appropriate protocol is SMTP. I.e., the protocol to be used on the interface between MMS-Relay and the Fax GW is identical to the one used between different MMS-Relays as specified in subclause 6.6.

NOTE: The MMS Relay – MMS Server interface is not in the scope of this subclause but described in A.3.

Towards the PSTN the Fax-GW terminates the T.30 facsimile protocol. Mobile terminated fax data will be converted into TIFF[36] image format and forwarded to the MMS Relay as an attachment in an IETF internet email. In case of mobile originated fax messages the Fax-GW receives a written email provided with the receiver's fax number from the MMS Relay. Depending on the functions of the Fax-GW this email may contain plain text only or additional attachments, too. Although T.37 requires only TIFF format support there are Fax-GWs out on the market that permit many different formats to be included.

A.5 Example of MMS interaction with 2G/3G Voice Mailboxes

MMS interaction with voice mailbox systems should be performed on a non-realtime basis. Figure 12 illustrates an example architecture for the incorporation of voice mailboxes.

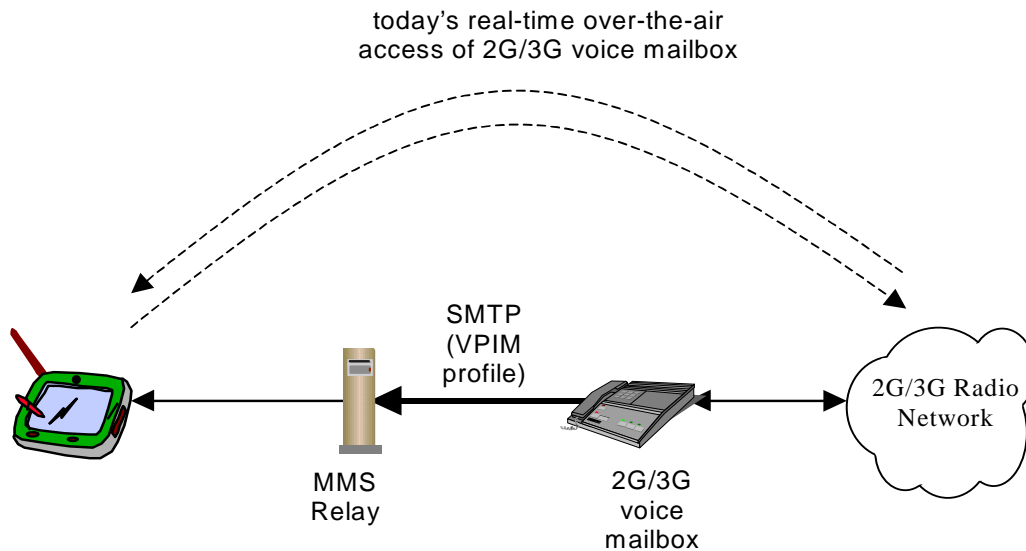


Figure 12: First Example of MMS interaction with 2G/3G Voice Mailbox based on VPIM

The Voice Profile for Internet Mail Version 2, VPIMv2, provides format extensions for MIME supporting the transmission of voice messages over standard Internet E-Mail systems. The VPIM concept was developed by the Electronic Messaging Association (EMA). After VPIMv2 had been reviewed by the IETF it became RFC 2421 [33].

The VPIM specification allows voice records to be MIME encapsulated and sent as Internet mail attachments via SMTP or retrieved as Internet mail attachments via POP3 [34] or IMAP4[35]. The MIME type used for voice messages is "audio/*".

For the interaction of MMS with voice mailboxes, either the voice mailbox forwards received voice records as VPIM messages via SMTP to the MMS relay. This implies that voice messages' download is always done via the MMS service. In this case the protocol to be used on the interface between MMS-Relay and the voice mailbox is SMTP and thus identical to the one used between different MMS-Relays as specified in subclause 6.6.

Alternatively, the MMS Relay may poll the voice mailbox via POP3 or IMAP4 for new messages received. Messages the user wants to retrieve via the MMS service can then be downloaded via POP3/IMAP4 from the voice mailbox to the MMS Relay from where they are delivered to the MMS User Agent. This enables the user to do both, retrieve voice messages via today's realtime voice mail services or as an MM. In any case it is expected that the voice mailbox is still the owner of the message and as a consequence responsible for the storage.

As an alternative the MMS interworking with a 2G/3G Voice Mailbox System could be envisaged via an HTTP interface as depicted in figure 13.

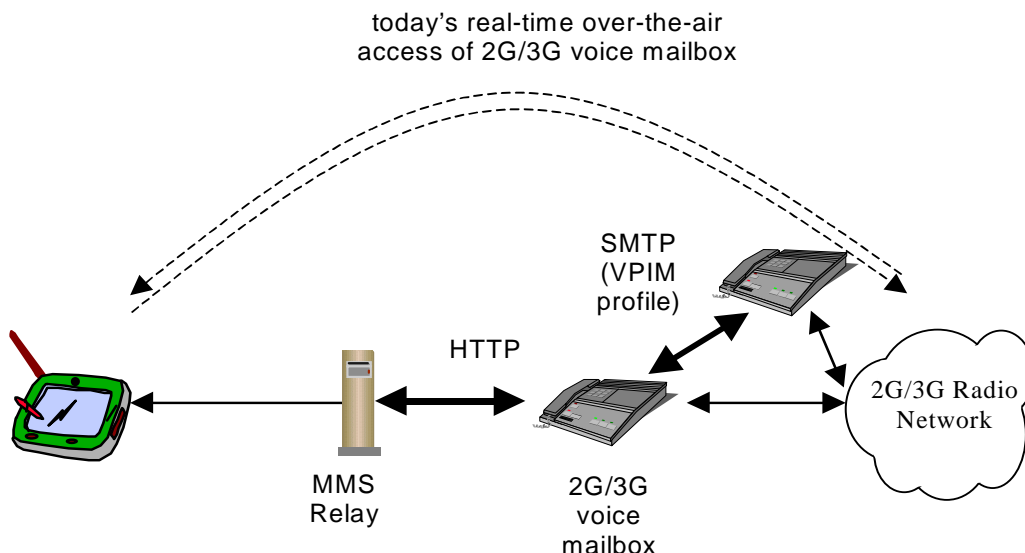


Figure 13: Second example of MMS interaction with 2G/3G Voice Mailbox based on HTTP

A.6 Example of interaction with Internet E-Mail Messaging

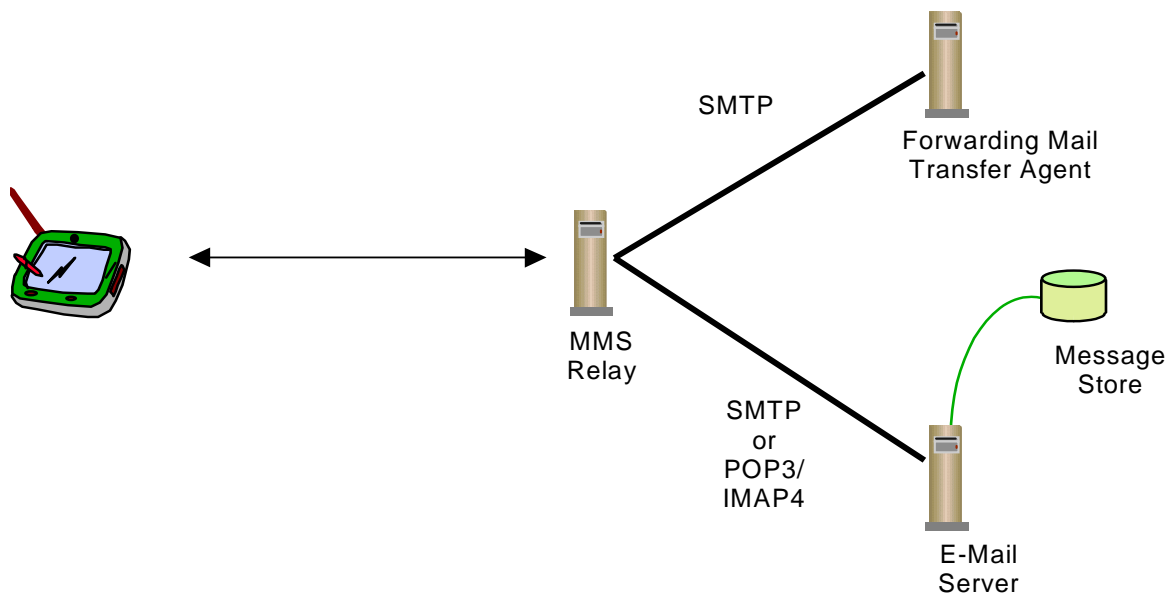


Figure 14: Example of interaction with Internet E-Mail messaging

In this architecture the server will be an E-Mail server providing post office services which are accessible e.g. via POP3 [34] or IMAP[35] for Internet E-Mail retrieval in the MMSE or are accessible to the Relay using SMTP. The MMS Relay will send MMs that are to be transmitted as Internet E-Mail via SMTP.

In the case of retrieval and sending of MMs from and to the Internet Email service is done via SMTP, the protocol to be used on the interface between MMS-Relay and the Mail Transfer Agent, MTA/Email Server is identical to the one used between different MMS-Relays as specified in subclause 6.6.

A.7 Example of interaction with Short Message Service, SMS

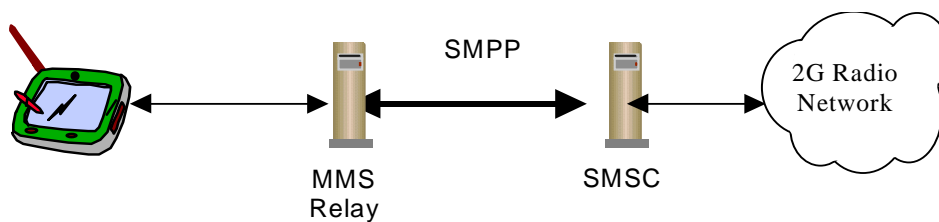


Figure 15: Example of MMS interaction with SMS based on SMPP

In the light of the WAP standardisation the SMPP Developer's Forum has defined a common standard for sending and receiving Short Messages via an SMSC, the Short Message Peer-to-Peer Protocol, SMPP [37].

Depending on the SMSC manufacturer the MMS Relay either can be directly connected to the SMSC (as shown in figure 15) or an additional SMS-Gateway has to be added. In the latter case the SMS-GW has to be located between the MMS Relay and the SMSC and provides the mapping of SMPP to the manufacturer's proprietary SMSC access protocol.

Annex B (Informative): Change history

Change history							
Date	TSG #	TSG Doc.	CR	Rev	Subject/Comment	Old	New
15/03/00	T#7	TP-000028			New	2.0.0	3.0.0
					Editorial change by MCC	3.0.0	3.0.1
07/06/02	T#16	TP-020105	071		Encapsulation of a short message (SMS) in a multimedia message (MMS)	3.0.1	3.1.0

History

Document history		
V3.0.1	March 2000	Publication
V3.1.0	June 2002	Publication