

# ETSI TS 125 467 V8.1.0 (2009-04)

---

*Technical Specification*

**Universal Mobile Telecommunications System (UMTS);  
UTRAN architecture for 3G Home NodeB;  
Stage 2  
(3GPP TS 25.467 version 8.1.0 Release 8)**



---

**Reference**RTS/TSGR-0325467v810

---

**Keywords**UMTS

---

**ETSI**

650 Route des Lucioles  
F-06921 Sophia Antipolis Cedex - FRANCE

---

Tel.: +33 4 92 94 42 00 Fax: +33 4 93 65 47 16

Siret N° 348 623 562 00017 - NAF 742 C  
Association à but non lucratif enregistrée à la  
Sous-Préfecture de Grasse (06) N° 7803/88

---

**Important notice**

---

Individual copies of the present document can be downloaded from:

<http://www.etsi.org>

The present document may be made available in more than one electronic version or in print. In any case of existing or perceived difference in contents between such versions, the reference version is the Portable Document Format (PDF). In case of dispute, the reference shall be the printing on ETSI printers of the PDF version kept on a specific network drive within ETSI Secretariat.

Users of the present document should be aware that the document may be subject to revision or change of status. Information on the current status of this and other ETSI documents is available at

<http://portal.etsi.org/tb/status/status.asp>

If you find errors in the present document, please send your comment to one of the following services:

[http://portal.etsi.org/chaicor/ETSI\\_support.asp](http://portal.etsi.org/chaicor/ETSI_support.asp)

---

**Copyright Notification**

---

No part may be reproduced except as authorized by written permission.  
The copyright and the foregoing restriction extend to reproduction in all media.

© European Telecommunications Standards Institute 2009.  
All rights reserved.

**DECT™**, **PLUGTESTS™**, **UMTS™**, **TIPHON™**, the TIPHON logo and the ETSI logo are Trade Marks of ETSI registered for the benefit of its Members.

**3GPP™** is a Trade Mark of ETSI registered for the benefit of its Members and of the 3GPP Organizational Partners.

**LTE™** is a Trade Mark of ETSI currently being registered

for the benefit of its Members and of the 3GPP Organizational Partners.

**GSM®** and the GSM logo are Trade Marks registered and owned by the GSM Association.

---

## Intellectual Property Rights

IPRs essential or potentially essential to the present document may have been declared to ETSI. The information pertaining to these essential IPRs, if any, is publicly available for **ETSI members and non-members**, and can be found in ETSI SR 000 314: "*Intellectual Property Rights (IPRs); Essential, or potentially Essential, IPRs notified to ETSI in respect of ETSI standards*", which is available from the ETSI Secretariat. Latest updates are available on the ETSI Web server (<http://webapp.etsi.org/IPR/home.asp>).

Pursuant to the ETSI IPR Policy, no investigation, including IPR searches, has been carried out by ETSI. No guarantee can be given as to the existence of other IPRs not referenced in ETSI SR 000 314 (or the updates on the ETSI Web server) which are, or may be, or may become, essential to the present document.

---

## Foreword

This Technical Specification (TS) has been produced by ETSI 3rd Generation Partnership Project (3GPP).

The present document may refer to technical specifications or reports using their 3GPP identities, UMTS identities or GSM identities. These should be interpreted as being references to the corresponding ETSI deliverables.

The cross reference between GSM, UMTS, 3GPP and ETSI identities can be found under <http://webapp.etsi.org/key/queryform.asp>.

# Contents

Intellectual Property Rights .....	2
Foreword.....	2
Foreword.....	5
1 Scope .....	6
2 References .....	6
3 Definitions, symbols and abbreviations .....	6
3.1 Definitions .....	6
3.2 Abbreviations .....	6
4 Overall architecture .....	7
4.1 General .....	7
4.1.1 HNB Management System (HMS).....	7
4.1.2 Security Gateway (SeGW).....	7
4.1.3 HNB Gateway (HNB-GW).....	8
4.1.4 HNB.....	8
4.2 Functional split.....	8
5 UTRAN functions for HNB access .....	10
5.1 UE Registration .....	10
5.1.1 General.....	10
5.1.2 UE Registration: case of non CSG UEs or non CSG HNBs.....	11
5.1.3 UE Registration: case of CSG UEs and CSG HNBs .....	12
5.2 HNB Registration .....	13
5.2.1 General.....	13
5.2.2 HNB Registration procedure.....	13
5.3 HNB-GW Discovery Function .....	15
5.3.1 General.....	15
5.4 HNB de-registration Function .....	15
5.4.1 General.....	15
5.5 Iuh Disconnect.....	15
5.5.1 General.....	15
5.5.2 Iuh Disconnect procedure .....	16
6 Requirements for O&M.....	17
6.1 O&M for HNB .....	17
6.1.1 Provisioning Procedure for HNB.....	17
6.1.2 Location Verification.....	17
6.1.2.1 General .....	17
6.1.2.2 Macro-cell Information .....	17
6.1.2.2.1 General .....	17
6.1.2.2.2 UTRAN Cell Information.....	18
6.1.2.2.3 GSM Cell Information.....	18
6.1.2.3 GNSS Location Information .....	18
6.1.2.4 Broadband Connection Information.....	19
6.1.3 HNB-GW Discovery.....	19
6.1.4 HNB Provisioning .....	19
6.1.4.1 General .....	19
6.1.4.2 CN Level Parameters .....	20
6.1.4.3 RAN Level Parameters .....	21
6.1.4.4 RF Level Parameters .....	22
6.2 O&M for HNB GW.....	22
7 Iuh interface protocol structure .....	23
7.1 General .....	23
7.2 Iuh .....	23

**Annex A (informative):**    **Change History** .....25  
History .....26

---

## Foreword

This Technical Specification has been produced by the 3<sup>rd</sup> Generation Partnership Project (3GPP).

The contents of the present document are subject to continuing work within the TSG and may change following formal TSG approval. Should the TSG modify the contents of the present document, it will be re-released by the TSG with an identifying change of release date and an increase in version number as follows:

Version x.y.z

where:

- x the first digit:
  - 1 presented to TSG for information;
  - 2 presented to TSG for approval;
  - 3 or greater indicates TSG approved document under change control.
- y the second digit is incremented for all changes of substance, i.e. technical enhancements, corrections, updates, etc.
- z the third digit is incremented when editorial only changes have been incorporated in the document.

---

# 1 Scope

The present document specifies the UTRAN architecture for 3G Home NodeB (HNB).

It covers specification of the functions for UEs not supporting Closed Subscriber Groups (CSG) (i.e. pre-Rel-8 UEs) and UEs supporting CSGs. It also covers HNB specific requirements for O&M.

---

# 2 References

The following documents contain provisions which, through reference in this text, constitute provisions of the present document.

- References are either specific (identified by date of publication, edition number, version number, etc.) or non-specific.
- For a specific reference, subsequent revisions do not apply.
- For a non-specific reference, the latest version applies. In the case of a reference to a 3GPP document (including a GSM document), a non-specific reference implicitly refers to the latest version of that document *in the same Release as the present document*.

- [1] 3GPP TR 21.905: "Vocabulary for 3GPP Specifications".
- [2] 3GPP TS 25.468: "UTRAN Iuh Interface RUA signalling".
- [3] 3GPP TS 25.469: "UTRAN Iuh Interface HNBAP signalling".
- [4] 3GPP TS 25.401: "UTRAN overall description".
- [5] 3GPP TS 25.410: "UTRAN Iu Interface: general aspects and principles".
- [6] IETF RFC 4960 (September 2007): "Stream Control Transmission Protocol".
- [7] Broadband Forum TR-069 Amendment 2, *CPE WAN Management Protocol*, Broadband Forum Technical Report, 2007.

---

# 3 Definitions, symbols and abbreviations

## 3.1 Definitions

For the purposes of the present document, the terms and definitions given in TR 21.905 [1] and the following apply. A term defined in the present document takes precedence over the definition of the same term, if any, in TR 21.905 [1].

**Home NodeB, 3G Home NodeB:** These terms, their derivations and abbreviations are used synonymously throughout this document.

## 3.2 Abbreviations

For the purposes of the present document, the abbreviations given in TR 21.905 [1] and the following apply. An abbreviation defined in the present document takes precedence over the definition of the same abbreviation, if any, in TR 21.905 [1].

CSG	Closed Subscriber Group
DSL	Digital Subscriber Line
DSL-GW	DSL GateWay
GNSS	Global Navigation Satellite System
GPS	Global Positioning System
HMS	Home NodeB Management System

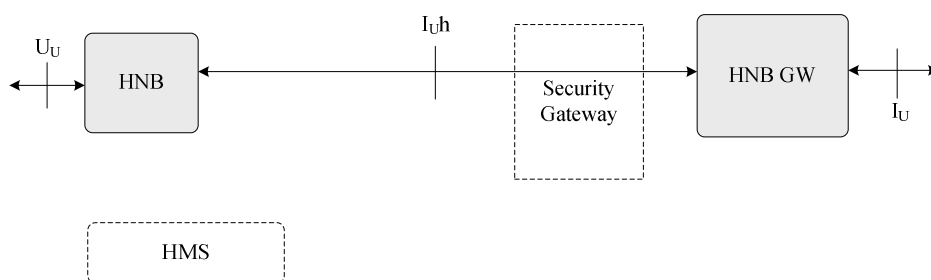
HNB	3G Home NodeB
HNB-GW	3G HNB Gateway
HW	Hard Ware
IP	Internet Protocol
LAC	Local Area Code
RAC	Routing Area Code
RGW	Residential GateWay
SAC	Service Area Code
SeGW	Security GateWay
SW	Soft Ware

## 4 Overall architecture

### 4.1 General

The overall UMTS architecture and UTRAN architectures are described in 25.401 and 25.410. For clarity and ease of understanding, at appropriate places references to TR-069 and associated methods are described briefly although they are beyond the scope of this specification.

The reference model shown in Figure 4.1-1 below contains the network elements that make up the HNB access network. There is one-to-many relationship between HNB-GW and HNB(s).



**Figure 4.1-1. Iuh reference model.**

The HNB GW serves the purpose of a RNC presenting itself to the CN as a concentrator of HNB connections. The Iu interface between the CN and the HNB-GW serves the same purpose as the interface between the CN and a RNC. One HNB serves only one cell.

**NOTE:** The Security gateway is a logically separated entity and may be implemented either as a separate physical element or integrated into, for example, a HNB-GW.

The HNB access network includes the functional entities as shown in Figure 4.1-1 and detailed below.

#### 4.1.1 HNB Management System (HMS)

- Based on TR-069 family of standards [7]
- Facilitates HNB-GW discovery
- Provisions configuration data to the HNB
- Performs Location verification of HNB and assigns appropriate serving elements (HMS, Security Gateway and HNB-GW).

#### 4.1.2 Security Gateway (SeGW)

- Terminates Secure tunnelling for TR-069 [7] as well as Iuh



- Authentication of HNB
- Provides access to HMS and HNB-GW

### 4.1.3 HNB Gateway (HNB-GW)

- Terminates Iuh from HNB. Appears as a RNC to the existing Core network using existing Iu interface.
- Provides service to the HNB

### 4.1.4 HNB

- Customer Premise Equipment that offers the Uu Interface to the UE
- Provides the RAN connectivity using the Iuh interface
- Supports RNC like functions, the details of which are captured in table 4.2-1 below
- Supports HNB registration and UE registration over Iuh.

## 4.2 Functional split

The UTRAN functions in the HNB are supported by RANAP, whereas the HNB specific functions are supported by Home NodeB Application Protocol (HNBAP) between the HNB and the HNB GW. The HNB GW provides concentration function for the control plane and may provide concentration function for the user plane.

This sub-clause defines the functional split between the core network and the UMTS radio access network. The functional split is shown in table 4.2-1 and 4.2-2

Table 4.2-1. Functional split for UTRAN function in the HNB access.

Function	HNB	HNB GW	CN
<b>RAB management functions:</b>			
RAB establishment, modification and release	X	FFS	X
RAB characteristics mapping I <sub>u</sub> transmission bearers	X	X	
RAB characteristics mapping U <sub>u</sub> bearers	X		
RAB queuing, pre-emption and priority	X		X
<b>Radio Resource Management functions:</b>			
Radio Resource admission control	X		
Broadcast Information	X		X
<b>Iu link Management functions:</b>			
Iu signalling link management	X	X	X
ATM VC management		X	X
AAL2 establish and release		X	X
AAL5 management		X	X
GTP-U Tunnels management	X	X	X
TCP Management	X (FFS)	(X) <sup>Note 1</sup>	X
Buffer Management	X	X	
<b>Iu U-plane (RNL) Management:</b>			
Iu U-plane frame protocol management			X
Iu U-plane frame protocol initialization	X		
<b>Mobility management functions:</b>			
Location information reporting	X		X
Handover and Relocation			
Inter RNC hard HO, Iur not used or not available	X	FFS <sup>Note 4</sup>	X
Serving RNS Relocation (intra/inter MSC)	X (FFS)		X
Inter system hard HO (UMTS-GSM)	X	FFS <sup>Note 4</sup>	X
Inter system Change (UMTS-GSM)	X	FFS	X
Paging Triggering	X		X
GERAN System Information Retrieval	X		X
<b>Security Functions:</b>			
Data confidentiality			
Radio interface ciphering	X		
Ciphering key management			X
User identity confidentiality	X		X
Data integrity			
Integrity checking	X		
Integrity key management			X
<b>Service and Network Access functions:</b>			
CN Signalling data	X		X
Data Volume Reporting	X		
UE Tracing	X		X
Location reporting	X	FFS <sup>Note 3</sup>	X
<b>Iu Co-ordination functions:</b>			
Paging co-ordination	X		X
NAS Node Selection Function		X	
MOCN Rerouting Function		X <sup>Note 5</sup>	X
<b>HNB Registration<sup>Note 2</sup></b>			
HNB Registration Function	X	X	
HNB-GW Discovery Function	X		
HNB de-registration Function	X	X	
<b>UE Registration for HNB<sup>Note 2</sup></b>			
UE Registration Function for HNB	X	X	
UE de-registration Function for HNB	X	X	
<b>Iuh user-plane Management functions</b>			
Iuh User plane transport bearer handling	X	X	
Note 1: If TCP is terminated for Iu-BC in the HNB GW			
Note 2: Protocol support for this group of functions is provided by the HNB Application Protocol.			
Note 3: Whether it is possible (and may be necessary) to provide location information from the HNB GW (e.g. GW may have logic to derive location based on the public IP address of the HNB GW, etc). is FFS			
Note 4: Support for relocation from the macro network to HNB is FFS.			
Note 5: Support for MOCN feature is FFS.			

**Table 4.2-2. Functional split for HNB function in the HNB access.**

Function	HNB	HNB GW
<b>HNB Registration</b> <sup>Note 1</sup>		
HNB Registration Function	X	X
HNB-GW Discovery Function	X	
HNB de-registration Function	X	X
<b>UE Registration for HNB</b> <sup>Note 1</sup>		
UE Registration Function for HNB	X	X
UE de-registration Function for HNB	X	X
<b>luh user-plane Management functions</b>		
luh User plane transport bearer handling	X	X
Note 1: Protocol support for this group of functions is provided by the HNB Application Protocol.		

---

## 5 UTRAN functions for HNB access

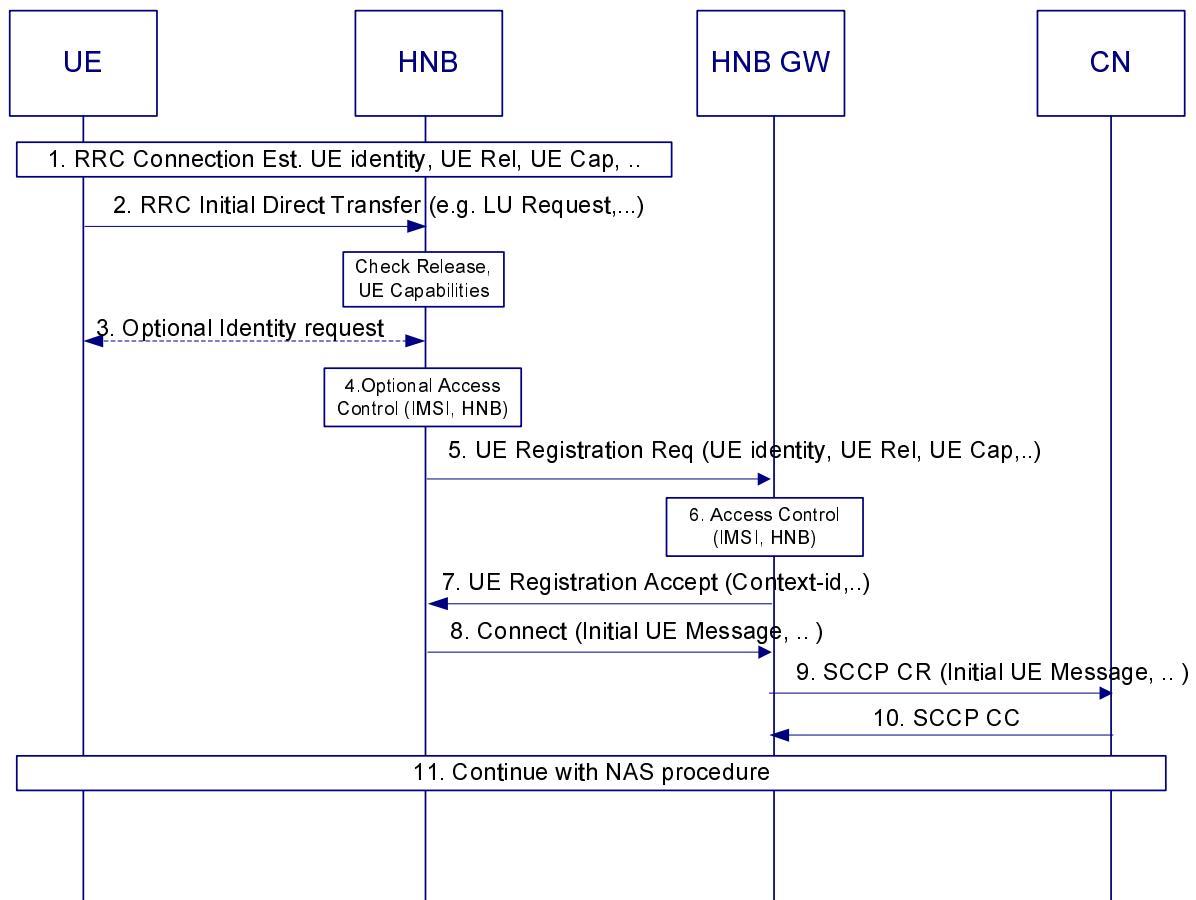
### 5.1 UE Registration

#### 5.1.1 General

The UE Registration Function for HNB provides means for the HNB to convey UE identification data to the HNB-GW in order to perform access control for the UE in the HNB GW. The UE Registration also informs the HNB-GW of the specific HNB where the UE is located.

The following sections illustrate the case when the HNB registers a specific UE with the HNB-GW. The registration is triggered when the UE attempts to access the HNB via an initial NAS message (e.g., Location Updating Request) and there is no context in the HNB allocated for that UE.

## 5.1.2 UE Registration: case of non CSG UEs or non CSG HNBs



**Figure 5.1.2-1. UE Registration for pre Rel-8 UEs.**

1. Upon camping on the HNB, the UE initiates an initial NAS procedure (e.g. LU Procedure) by establishing an RRC connection with the HNB. UE identity, UE capabilities, e.g. "Access stratum release indicator" or "UE feature capability indicator" (FFS) and Establishment Cause, are reported to the HNB as part of the RRC Connection establishment procedure (step 1).
2. The UE then transmits a RRC Initial Direct Transfer message carrying the initial NAS message (e.g. Location Updating Request message) with some form of UE identity .
3. The HNB checks UE capabilities provided in step 1, if these indicate that CSG is not supported and if the identity of the UE (provided during RRC Connection Establishment) is unknown at the HNB being accessed, i.e. no Context id exists for the UE, the HNB initiates UE registration towards HNB-GW (step 5-7). Before starting the UE Registration procedure, HNB triggers the Identification procedure (step 3) asking for the UE IMSI, if such identity is not provided during the RRC Connection Establishment in case it is not an emergency call.. If the HNB has a context id for the UE, the UE registration procedure is not performed nor the Identification procedure.
4. The HNB may optionally perform access control based on IMSI and provided access control list
5. The HNB attempts to register the UE on the HNB-GW by transmitting the UE REGISTER REQUEST. The message contains at a minimum:
  - **UE Identity:** IMSI or TMSI of the (U)SIM associated with the UE and the indication about UE capabilities provided in step 1.

NOTE: The UE Identity provided in the HNBAP UE REGISTER REQUEST message is unauthenticated.

6. The HNB-GW checks the UE capabilities and the Registration Cause. If these indicate that CSG is not supported and that it is not an Emergency Call, the HNB-GW shall perform access control (step 6) for the particular UE attempting to utilize the specific HNB.

7. If the HNB-GW accepts the UE registration attempt it shall allocate a context-id for the UE and respond with an HNBAP UE REGISTER ACCEPT message, including the context-id, to the HNB. If the HNB-GW chooses to not accept the incoming UE registration request then the HNB-GW shall respond with an HNBAP UE REGISTER REJECT message. The HNB behaviour for reject handling shall further be determined by the cause specified in the HNBAP UE REGISTER REJECT message (FFS).
8. The HNB then sends an RUA CONNECT message containing the RANAP Initial UE message.
9. The reception of the RUA CONNECT message at the HNB-GW triggers the setup of SCCP connection by the HNB-GW towards the CN. HNB-GW forwards the RANAP Initial UE Message.
10. The CN responds with an SCCP Connection Confirm message.
11. The UE continues with the NAS procedure (e.g. Location Updating procedure) towards the CN, via the HNB and the HNB-GW.

NOTE: The HNB-GW may additionally utilize a CN assisted method (e.g. using IMSI provided in the COMMON ID message) to alleviate the security risks associated with spoofing of IMSI by the UE and subsequently trigger a UE deregistration upon such detection.

### 5.1.3 UE Registration: case of CSG UEs and CSG HNBs

This call flow assumes that the Core Network is able to perform access control on the basis of Closed Subscriber Groups.

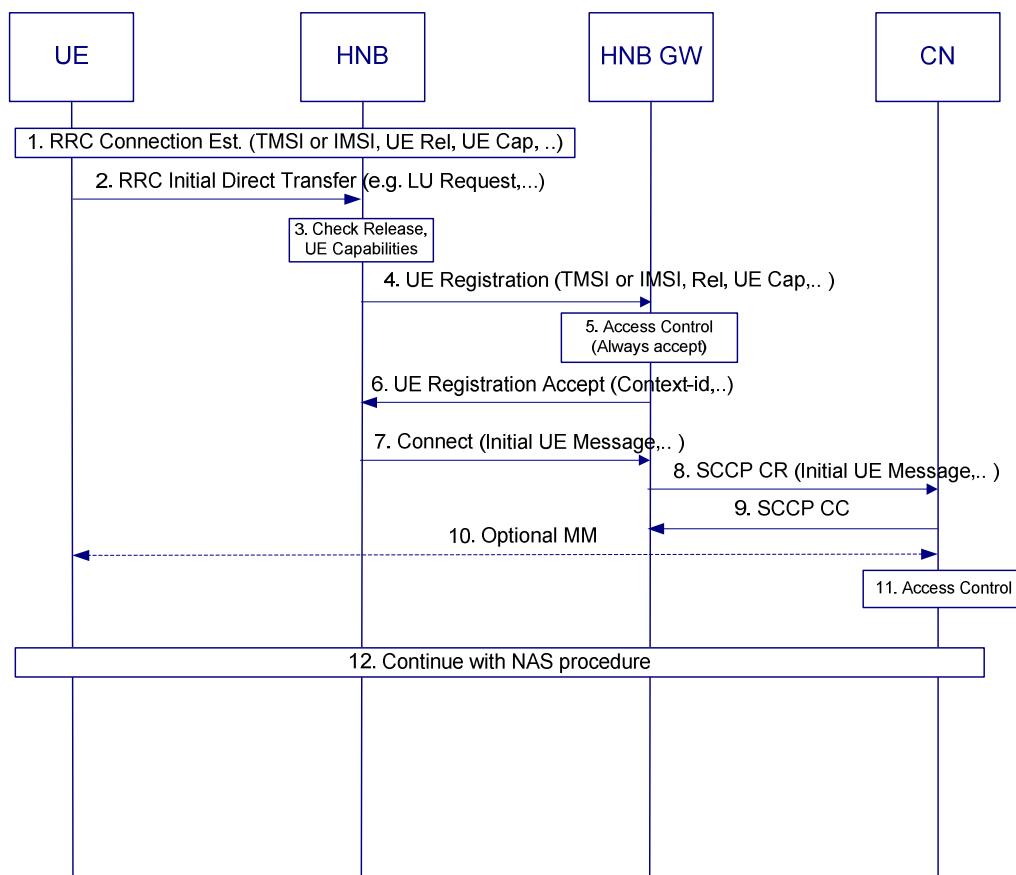


Figure 5.1.3-1. UE Registration for Rel-8 UEs.

1. Upon camping on the HNB, the UE initiates an initial NAS procedure (e.g. LU Procedure) by establishing an RRC connection with the HNB. UE identity and UE capabilities, e.g. "Access stratum release indicator" or "UE feature capability indicator" (FFS), are reported to the HNB as part of the RRC Connection establishment procedure (step 1).

2. The UE then transmits a RRC Initial Direct Transfer message carrying the initial NAS message (e.g. Location Updating Request message) with some form of identity (e.g. IMSI or TMSI, ..).
3. The HNB checks UE capabilities provided in step 1, if these indicate that CSG is supported and if the identity of the UE (provided during RRC Connection Establishment) is unknown at the HNB being accessed, i.e. no Context id exist for the UE, the HNB initiate UE registration towards HNB-GW (step 4-6). If HNB has a context id for UE, UE registration procedure is not performed. No Identification procedure is triggered, independent on the identity reported by the UE during the RRC Connection Establishment.
4. The HNB attempts to register the UE on the HNB-GW by transmitting the UE REGISTER REQUEST. The message contains at a minimum:
  - **UE Identity:** IMSI or TMSI of the (U)SIM associated with the UE and the indication about UE capabilities provided in step 1.

NOTE: The UE IMSI/TMSI provided in the UE REGISTER message is unauthenticated.

5. The HNB-GW checks UE capabilities and if these indicate that CSG is supported the HNB-GW shall accept the UE registration and allocate a context-id for the UE.
6. HNB-GW respond with a UE REGISTER ACCEPT message back to the HNB including a context-id allocated to the UE
7. The HNB then sends a CONNECT message containing the RANAP Initial UE message.
8. The reception of the CONNECT message at the HNB-GW triggers the setup of SCCP connection by the HNB-GW towards the CN. HNB-GW forwards the Initial UE Message including the CSG id of HNB.
9. The CN response with a SCCP Connection Confirm message.
10. The CN may optionally perform Mobility Management procedures, e.g. Authentication procedure.
11. The CN performs access control of UE.
12. After granted access the UE then continue with the NAS procedure (e.g. Location Updating procedure) towards the CN, via HNB and the HNB-GW.

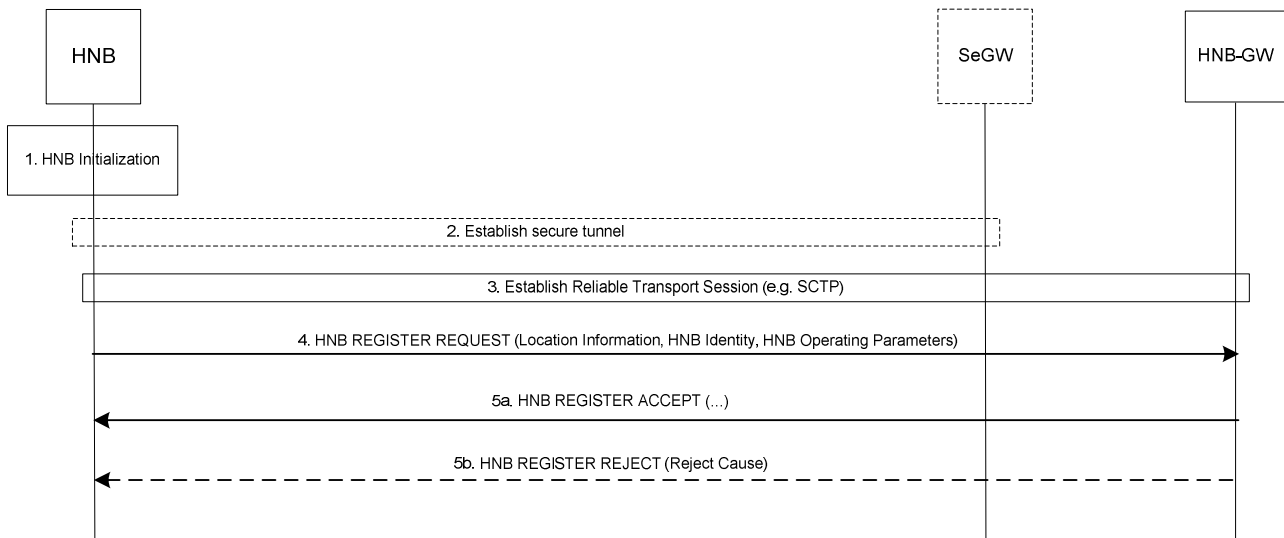
## 5.2 HNB Registration

### 5.2.1 General

The following section illustrates the case when the HNB registers with the HNB-GW. The HNB registration procedure serves the following purposes:

- It informs the HNB-GW that a HNB is now available at a particular IP address.

### 5.2.2 HNB Registration procedure



**Figure 5.2.2-1. HNB Registration procedure.**

1. HNB initialization is performed to obtain HNB configuration from the HNB Management System (HMS). Similarly, HNB-GW discovery is performed to obtain the initial serving HNB-GW information.

2. The HNB establishes a secure tunnel to the SeGW of the serving HNB-GW.

NOTE: This step may be omitted if a secure tunnel happens to be the same tunnel that is already established to contact the HMS.

3. The HNB sets up a SCTP transport session to a well-defined port on the serving HNB-GW.

4. The HNB then attempts to register with the serving HNB-GW using a HNB REGISTER REQUEST message. The message contains:

a. **HNB Location Information:** The HNB provides location information via use of one or more of the following mechanisms:

- i. detected macro-cell coverage information (e.g. GERAN and/or UTRAN cell information)
- ii. geographical co-ordinates (e.g. via use of GPS, etc)
- iii. Internet connectivity information (e.g. IP address), provided, the resulting location information is at least as accurate as location determination based on macro-cell coverage information, whether or not there is macro cell-coverage available at the location of the HNB (e.g. as determined by point i above).

b. **HNB Identity:** the HNB has a globally unique and permanent identity.

c. **HNB Operating Parameters:** Such as the selected LAC, RAC, SAC, etc.

5a. The HNB-GW may use the information from the HNB REGISTER REQUEST message to perform access control of the HNB (e.g. whether a particular HNB is allowed to operate in a given location, etc). If the HNB-GW accepts the registration attempt it shall respond with a HNB REGISTER ACCEPT message.

5b. Alternatively, the HNB-GW may reject the registration request (e.g. due to network congestion, blacklisted HNB, unauthorized HNB location, etc). In this case, the HNB-GW shall respond with a HNB REGISTER REJECT indicating the reject cause.

NOTE: The HNB shall start broadcasting only after successful registration with the HNB-GW.

## 5.3 HNB-GW Discovery Function

### 5.3.1 General

The HNB-GW Discovery Function provides the means to determine the address of the Serving HNB-GW for a particular HNB. The HNB will use the Serving HNB GW address to register with the Serving HNB-GW.

## 5.4 HNB de-registration Function

### 5.4.1 General

Editors Note: To be added.

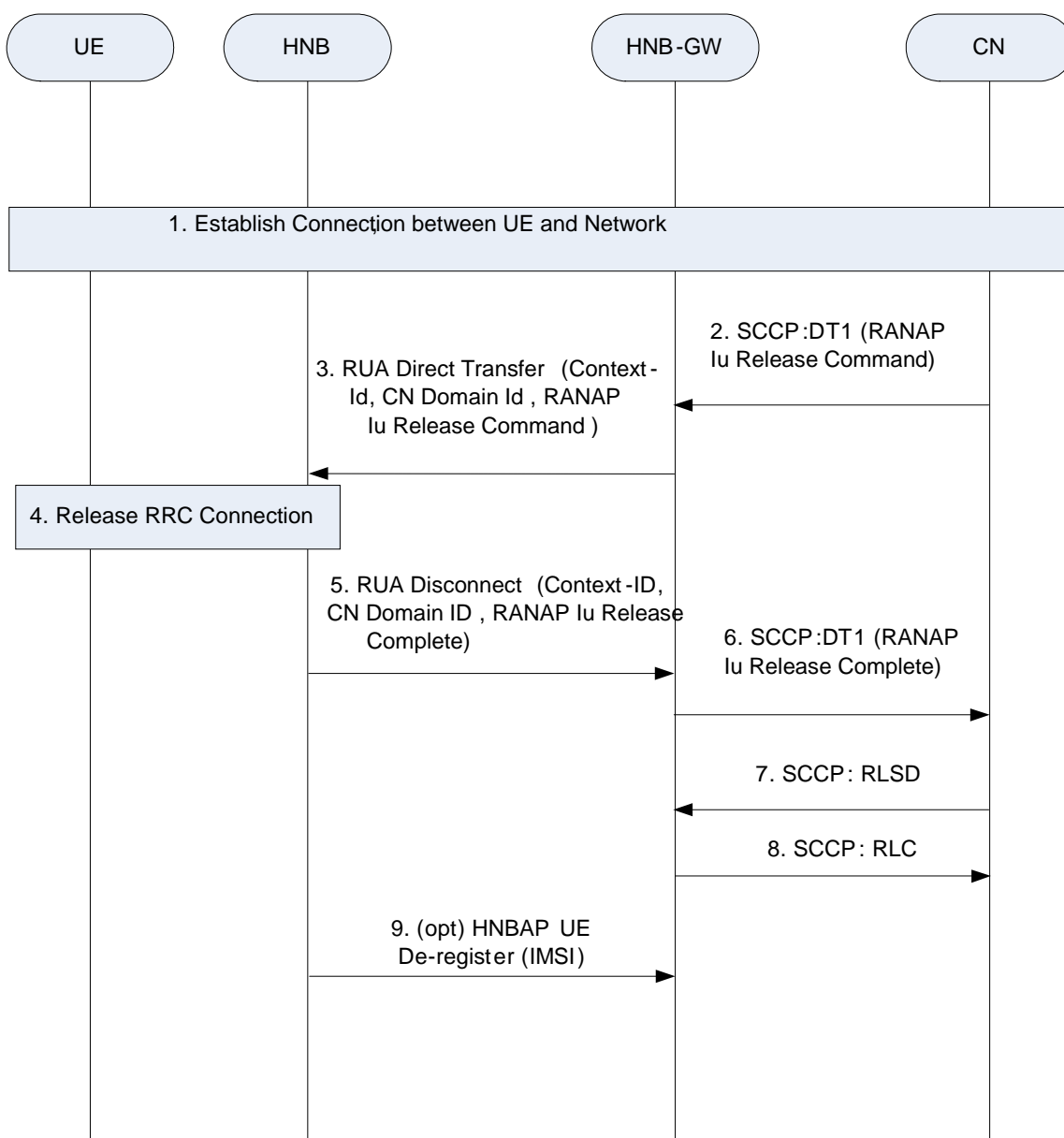
## 5.5 Iuh Disconnect

### 5.5.1 General

The following section illustrates the scenario where an UE-associated signaling connection is released across the Iuh. In this scenario the HNB is responsible for initiating the release of the UE-associated signaling connection via the RUA disconnect message. The HNB-GW is then responsible for co-ordinating the release of the UE-associated signaling connection with the corresponding Iu connection, which will be triggered by the CN.



## 5.5.2 Iuh Disconnect procedure

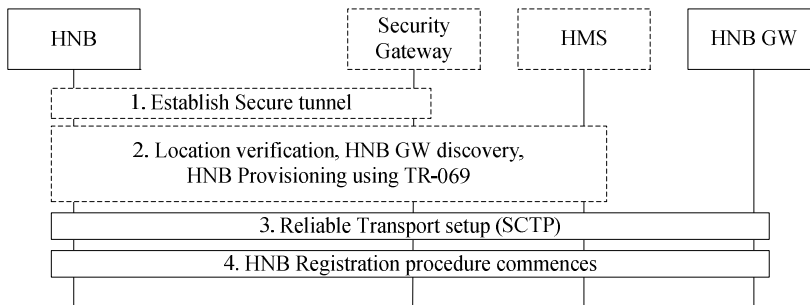


1. Establish connection between UE and network. Procedure in Section 5.1.
2. CN sends a RANAP Release Iu connection command message to the HNB-GW
3. HNB-GW forwards this message to the relevant HNB
4. HNB triggers the release of the RRC connection to the UE. In this case a single Iu connection had been established for the UE
5. HNB sends a Disconnect message to the HNB-GW to indicate that this is the end of this particular UE-associated signaling connection and includes the RANAP Release Iu Connection Complete message.
6. HNB-GW forwards the RANAP message onto the CN.
7. CN triggers the release of the associated SCCP connection
8. HNB-GW confirms that the SCCP connection is released
9. Optionally the HNB can de-register the UE context from the HNB-GW.

## 6 Requirements for O&M

### 6.1 O&M for HNB

#### 6.1.1 Provisioning Procedure for HNB



**Figure 6.1.1-1. Provisioning procedure for HNB.**

1. A secure tunnel is established from the HNB to the Security gateway.
2. Location verification shall be performed by the HMS based on information sent by the HNB (e.g. macro neighbour cell scans, global navigational satellite system type of information etc.). HMS determines the serving elements and provides the HNB GW, HMS and Security Gateway to the HNB. The HMS also provisions configuration parameters to the HNB only after successful location verification in the HMS.

NOTE: Steps 3 & 4 are shown only for completeness. Security Gateway and HMS are shown to highlight the general architecture.

NOTE: In the event information required for verifying location are not available (for example, no macro neighbour cells, no GNSS, no DSL line ID etc. available), HNB GW discovery may be based on specific operator and/or regulatory policies.

### 6.1.2 Location Verification

#### 6.1.2.1 General

During the location verification, HNB reports its location information to the HMS. HMS in turn examines the provided information and verifies HNB's location. There are 3 possible types of information for this purpose:

1. Macrocell Information
2. GNSS location information
3. Broadband connection information, provided, the resulting location information is at least as accurate as location determination based on macro-cell coverage information, whether or not there is macro-cell coverage available at the location of the HNB (e.g. as determined by point 1. above).

NOTE: Not all of this information is mandatory. In fact, the type of reported information is based on factors such as physical environmental condition the HNB is installed and/or possible variations in the HNB's HW and SW implementation.

#### 6.1.2.2 Macro-cell Information

##### 6.1.2.2.1 General

The HNB is expected to have a radio environment measurement capability. This includes capturing the following type of information from the surrounding environment.

- a) UTRAN cell information
  - RF level information
  - Broadcast information
- b) GSM cell information
  - RF level information
  - Broadcast information

#### 6.1.2.2.2 UTRAN Cell Information

The information in the following table is reported by the HNB to the HMS for each UTRAN cell detected.

**Table 6.1.2.2.2.-1. UTRAN Cell Information.**

Information		Description / Note	Presence	3GPP Reference
RF information	UARFCNDL	UARFCN (DL)	M	25.104, sec.5.4 32.642 sec. 6.3.11
	CPICHRSCP	RSCP of CPICH	M	
	PSC	Primary Scrambling Code	M	32.642 sec. 6.3.11
Broadcast information	PLMN Type	« GSM-MAP » or « ANSI-41 »	M	25.331, sec.10.3.1.12
	MCC	Mobile Country Code	M	24.008 32.642 sec. 6.3.10
	MNC	Mobile Network Code	M	24.008 32.642 sec. 6.3.10
	LAC	Location Area Code	M	24.008, sec.10.5.1.3 32.642 sec. 6.3.10
	RAC	Routing Area Code	M	24.008, sec.10.5.1.12.3 25.413, sec.9.2.3.7 32.642 sec. 6.3.10
	CellID	Cell ID	M	25.331, sec.10.3.2.2
	CSG Cell Info	<detail TBD per Rel.8 RRC spec>	O	Applicable to Rel.8 compliant cell only.

#### 6.1.2.2.3 GSM Cell Information

The information in the following table is reported by the HNB to the HMS for each GSM cell detected.

**Table 6.1.2.2.3. GSM Cell Information.**

Information		Description / Note	Presence	3GPP Reference
RF information	ARFCN	Channel number	M	32.652 sec. 6.3.5
	BCCHRSSI	RSSI of the BCCH carrier.	M	32.652 sec. 6.3.5
	BSIC	Base Station ID Code	M	32.652 sec. 6.3.5
Broadcast Information	MCC	Mobile Country Code	M	32.652 sec. 6.3.5
	MNC	Mobile Network Code	M	32.652 sec. 6.3.5
	LAC	Location Area Code	M	32.652 sec. 6.3.5
	RAC	Routing Area Code	M	32.652 sec. 6.3.5
	CellID	Cell ID	M	32.652 sec. 6.3.5

#### 6.1.2.3 GNSS Location Information

This information consists of, at minimum, latitude and longitude detected by the GNSS receiver (e.g. GPS receiver), if the HNB implementation includes this functionality.

### 6.1.2.4 Broadband Connection Information

This information consists of the information associated with the broadband connection (e.g. DSL) the HNB is connected with: 1) public IP address assigned to the RGW (e.g. DSL-GW/router), and 2) line identifier to which the RGW is connected with (e.g. DSL line ID) as seen on the broadband service provider. These are applicable only when this information is available to the HNB, and only when the resulting location information is at least as accurate as location determination based on macro-cell coverage information, whether or not there is macro-cell coverage available at the location of the HNB (e.g. as determined by clause 6.1.2.2 above).

### 6.1.3 HNB-GW Discovery

During the HNB-GW Discovery procedure, HMS provides the HNB with 3 identity information as shown in the following table. The information may be either IP address or FQDN to be resolved by DNS.

**Table 6.1.3. HNB-GW Discovery Information.**

Parameter	Description / Note	Presence	3GPP Reference
Serving HMS ID	One or more IDs may be provided	M	
Serving SeGW ID	One or more IDs may be provided	M	
Serving HNB-GW ID	One or more IDs may be provided	M	

### 6.1.4 HNB Provisioning

#### 6.1.4.1 General

During the HNB Provisioning procedure, the HMS transfers the HNB configuration information to the HNB. This includes 3 types of parameters:

1. CN level parameters
2. RAN level parameters
3. RF level parameters

**NOTE:** The HNB may have auto-configuration capabilities, such that the HMS sends a list/range of values to the HNB, which selects (and returns to HMS) a single value, also based on the information collected measuring the radio environment. The HMS may also provide control parameters of the auto-configuration process.

## 6.1.4.2 CN Level Parameters

Table 6.1.4.2. CN Level Parameters.

Parameter	Description / Note	Presence	3GPP Reference
PLMN Type	"GSM-MAP" or "ANSI-41"	M	25.331, sec.10.3.1.12
MCC	Mobile Country Code	M	24.008 32.642 sec. 6.3.8
MNC	Mobile Network Code	M	24.008 32.642 sec. 6.3.8
LAC	Location Area Code (one or more LACs may be provided)	M (Note 1)	24.008, sec.10.5.1.3 32.642 sec. 6.3.9
SAC	Service Area Code	M	25.413, sec.9.2.3.9 32.642 sec. 6.3.9
T3212	Periodic LAU timer (CS domain)	M	24.008, sec.10.5.1.12.2
ATT	Attach-detach allowed (CS domain)	M	24.008, sec.10.5.1.12.2
RAC	Routing area code (PS domain) (one or more RACs may be provided)	M (Note 1)	24.008, sec.10.5.1.12.3 25.413, sec.9.2.3.7 32.642 sec. 6.3.9
NMO	Network Mode of Operation (Gs i/f)	M	24.008, sec.10.5.1.12.3
Equivalent PLMN ID	List of one or more equivalent PLMN ID (MCC + MNC)	O (Note 2)	24.008, sec.10.5.1.13
Allowed IMSI list	For access control purpose.	O (Note 3)	24.008, sec.10.5.1.4
CSG Cell Info	CSG Capability Indication, CSG Id, in case the Cell is CSG capable <any further detail FFS per Rel.8 RRC spec>	M	Applicable to Rel.8 compliant cell only.
HNB Location Information	Location information (Geographical coordinates, Uncertainty code)	O (FFS Note 4)	25.413, sec.9.2.3.11
<p>NOTE 1: May be a list/range of values in case the HNB has auto-configuration capabilities.</p> <p>NOTE 2: This information is operator-dependent based on its circumstance.</p> <p>NOTE 3: ACL is an optional function at HNB. This information is provided if this function is enabled in the HNB.</p> <p>NOTE 4: Due to possible regulatory requirements (future or current), this parameter may become mandatory.</p>			

## 6.1.4.3 RAN Level Parameters

Table 6.1.4.3-1. RAN Level Parameters.

Parameter		Description	Presence	3GPP Reference
RNCID for HNB		RNC ID used by HNB	M	32.642 sec. 6.3.8
Cell ID		28-bit "Cell ID" in SIB3	M	25.331, sec.10.3.2.2
HSPA related	HSflag	Whether HSDPA/HSUPA is used or not	O	32.642-820 32.642 sec. 6.3.9
HCS related	UseOfHCS HCSPrio QHCS		M	25.331, sec.10.3.7.47, 10.3.7.12 32.642 sec. 6.3.9
Cell selection / reselection related	Quality measure QqualMin QqualMin-offset QrxlevMin QrxlevMin-offset Sintrasearch Sintersearch SsearchRAT SsearchHCS Treselections UETxPwrMaxRACH QHyst1	CPICH Ec/N0 or RSCP if Ec/N0 is used  if RSCP is used	O (Note*1)	25.331, sec.10.3.2.3, 10.3.2.4 32.642 sec. 6.3.9 25.304
Intra Freq Measurement Related	Filter coefficient Measurement quantity for freq quality estimate Hysteresis for event 1x Threshold for event 1x TimetoTrigger for event 1x Weighting factor for event 1x Reporting Range Triggering Condition	Filter coefficient CPICH Ec/No, CPICH RSCP, or pathloss "x" in 1x includes applicable events from 1A to 1J	O (Note*1)	25.331 sec.10.3.7.38, 10.3.7.39
Inter-Freq Measurement Related	Filter coefficient Measurement quantity for freq quality estimate Hysteresis for event 2x Threshold for event 2x TimetoTrigger for event 2x Weighting factor for event 2x	Filter coefficient CPICH Ec/No, CPICH RSCP "x" in 2x includes applicable events from 2A to 2F	O (Note*1)	25.331 sec.10.3.7.18, 10.3.7.19
Inter-RAT Measurement Related	Filter coefficient BSIC verification required Hysteresis for event 3x Threshold for event 3x TimetoTrigger for event 3x Weighting factor for event 3x	Filter coefficient "required" / "not required" "x" in 3x includes applicable events from 3A to 3D	O (Note*1)	25.331 sec.10.3.7.29, 10.3.7.30
RRC related	N30x, N31x T30x, T31x, T320	RRC constants RRC timers	O (Note*1)	25.331, sec.10.3.3.43, 10.3.3.44
Neighbour list (UTRA Intra-Freq cell info list)	RNCID C-Id LAC RAC PSC	Defined for each intra-freq cells C-Id is either 12 or 16 bits depending on RNCID length.	O (Note*2)	32.642 sec. 6.3.10 25.401 sec. 6.1 25.413 sec. 9.2.1.28
Neighbour list (UTRA Inter-Freq cell info list)	RNCID C-Id LAC RAC UARFCN (DL) PSC	Defined for each inter-freq cells C-Id is either 12 or 16 bits depending on RNCID length	O (Note*2)	32.642 sec. 6.3.10 25.401 sec. 6.1 25.413 sec. 9.2.1.28

Neighbour list (GERAN cell info list)	CellID BSIC BandIndicator BCCHARFCN	Defined for each inter-RAT cells (assume GSM cell only).	O (Note*2)	32.652 sec. 6.3.5
<p>Note (*1): Marked as optional based on the operator preference on the extent of provisioning that the HMS performs to the HNB vs. the level of autonomy that HNB has for auto-configuration. In case this IE is absent, default value is assumed (additional implication is that HNB has a set of default parameter values).</p> <p>Note (*2): Marked as optional due to several implications: 1) there may be no suitable neighbour cell available based on the RF scanning procedure described earlier, 2) based on operator deployment policy (e.g. dedicated RF channel for HNB layer vs. macro layer), and 3) operator preference on the extent of provisioning that the HMS performs to the HNB vs. the level of autonomy that HNB has for auto-configuration. Regarding 3) above, this may include capabilities such as the HMS to add or remove neighbour cells initially detected by the HNB during the radio environment scanning process, and the HNB to extend the received Neighbour list based on auto-configuration capabilities.</p>				

#### 6.1.4.4 RF Level Parameters

**Table 6.1.4.4. RF Level Parameters.**

Parameter	Description / Note	Presence	3GPP Reference
UARFCN (DL)	Frequency channel number (one or more UARFCNs may be provided)	O (note 1)	25.101, sec.5.4, 25.104, sec.5.4, 32.642, sec.6.3.11
PSC	Primary scrambling code (one or more PSCs may be provided)	O (note 1)	32.642, sec.6.3.11
MaxHNBTxPower	Maximum allowed Tx power of the HNB.	O (note 1)	25.104, sec.6.2, 32.642, sec.6.3.9
MaxULTxPower	The parameter defines the maximum transmission power level a UE can use on PRACH.	O (note 1)	25.101, sec.6.2, 32.642, sec.6.3.9
P-CPICHPower	Transmission power of Primary CPICH (DL config). This may be either a specific value or a range (min / max) of values.	O (note 1)	32.642, sec.6.3.11
P-SCHPower	Primary SCH power offset (DL config)	O (note 1)	32.642, sec.6.3.11
S-SCHPower	Secondary SCH power offset (DL config)	O (note 1)	32.642, sec.6.3.11
BCHPower	BCH power offset (DL config)	O (note 1)	32.642, sec.6.3.11
AICHPower	AICH power offset (DL config, BCCH info)	O (note 1)	25.331, sec.10.3.6.3, 32.642, sec.6.3.11
PICHPower	PICH power offset (DL config, BCCH info)	O (note 1)	25.331, sec.10.3.6.50, 32.642, sec.6.3.9
PCHPower	PCH power offset (DL config, BCCH info)	O (note 1)	32.642, sec.6.3.9
FACHPower	FACH power offset (DL config, BCCH info)	O (note 1)	32.642, sec.6.3.9
<p>NOTE 1: Marked as optional based on the operator preference on the extent of provisioning that the HMS performs to the HNB vs. the level of autonomy that HNB has for auto-configuration. In case this IE is absent, it is assumed that the HNB will derive the suitable value based on its auto-configuration capability. In case this IE is a list/range of values, the HNB will choose a single value based on its auto-configuration capability. UARFCN UL may be automatically determined by the HNB upon UARFCN DL (basing on standard duplex configuration and country-specific spectrum allocation).</p>			

## 6.2 O&M for HNB GW

Editors Note: FFS

---

## 7 Iuh interface protocol structure

### 7.1 General

Figure 7.2-1 shows  $I_{uh}$  the Control Plane as well as the User Plane protocol structure over the Iuh interface. For the control plane, the HNBAP protocol provides the signalling service between the HNB and the HNB-GW required to fulfil the following functions and is further described in 25.469 [3]:

- HNB Registration
- UE Registration
- Error Handling. This function allows the reporting of general error situations for which function specific error messages have not been defined.

RUA provides the signalling service between the HNB and the HNB-GW that is required to fulfil the following functions and is further described in 25.468 [2]:

- Transparent transfer of RANAP messages
- Error Handling. This function allows the reporting of general error situations for which function specific error messages have not been defined.

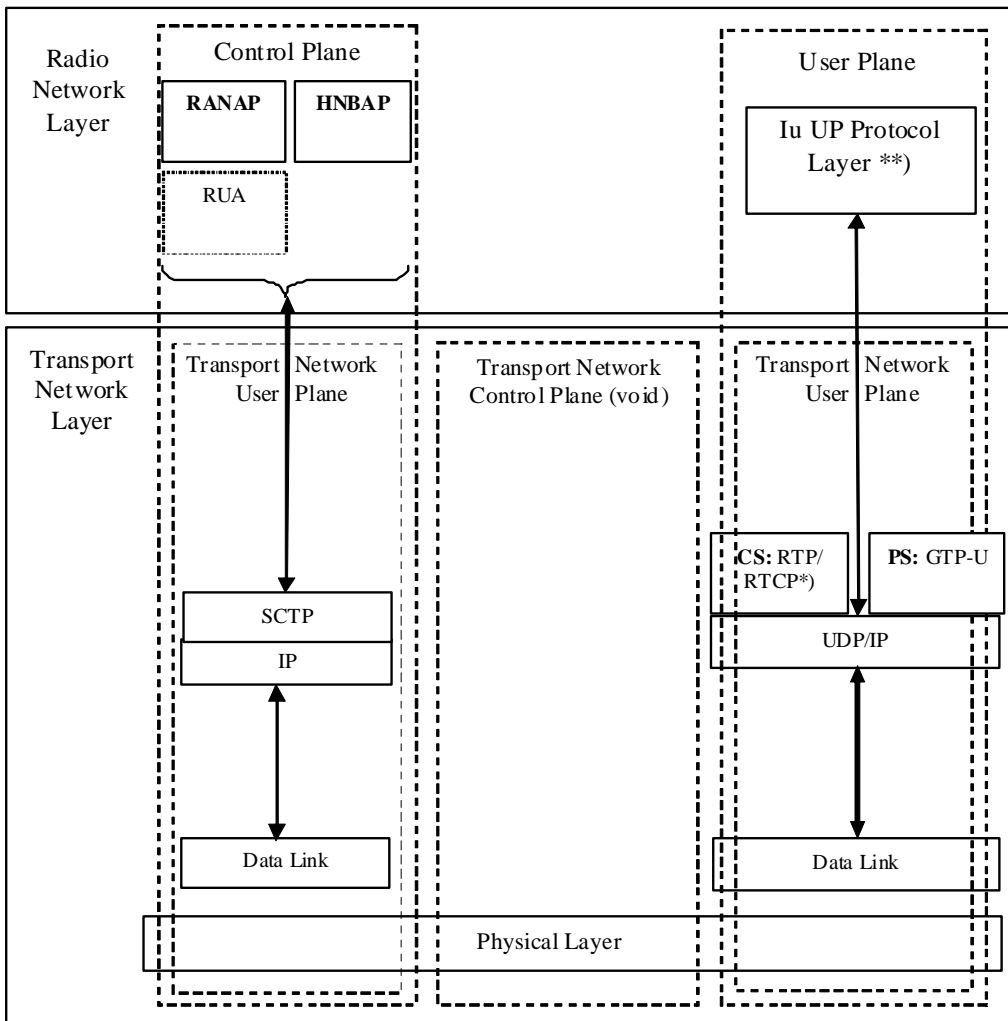
The payload protocol identifier (PPI) field in SCTP [6] is set to the value assigned by IANA for use with the RUA protocol. In addition, a separate value for the PPI is defined for HNBAP.

The destination port number field in SCTP [6] is set to the value assigned by IANA for setup of the common SCTP association in HNBAP and RUA.

### 7.2 Iuh

Figure 7.2-1 shows the protocol structure for Iuh, following the structure described in [5].





\*) RTCP is optional.

\*\*\*) Iu UP is terminated in CN and HNB only (i.e. not in the HNB GW)

**Figure 7.2-1. I<sub>uh</sub>-Interface Protocol Stack.**

## Annex A (informative): Change History

TSG #	TSG Doc.	CR	Rev	Subject/Comment	New
42	RP-080832			approved at TSG-RAN#42 and placed under change control	8.0.0
43	RP-090081	0001	2	Change Request for TS25.467 regarding location information in Chapters 3.2, 5.2.2 and 6.1.2.	8.1.0
43	RP-090081	0004	2	C-Id for HNB to Macro handout	8.1.0
43	RP-090082	0006	1	Clarification on the Maximum number of cell supported by 3G HNB	8.1.0
43	RP-090081	0007	1	SCTP destination port for HNBAP and RUA.	8.1.0
43	RP-090244	0008	1	Corrections on UE Registration Procedure	8.1.0
43	RP-090081	0009	2	Corrections in UE Registration procedure	8.1.0
43	RP-090081	0010	2	Correction in HNB registration procedure	8.1.0
43	RP-090244	0017	1	Correction of MOCN function in the function split table	8.1.0
43	RP-090082	0018	2	CN Assistant Access control	8.1.0
43	RP-090082	0019	2	Add description for handling in case of emergency calls	8.1.0
43	RP-090082	0021	2	Reference to BBF TR-069 missing	8.1.0
43	RP-090081	0023	1	Introduction of luh connection release	8.1.0

---

# History

<b>Document history</b>		
V8.0.0	January 2009	Publication
V8.1.0	April 2009	Publication