

# ETSI TS 132 172 V6.4.0 (2007-06)

---

*Technical Specification*

**Digital cellular telecommunications system (Phase 2+);  
Universal Mobile Telecommunications System (UMTS);  
Telecommunication management;  
Subscription Management (SuM)  
Network Resource Model (NRM)  
Integration Reference Point (IRP):  
Information Service (IS)  
(3GPP TS 32.172 version 6.4.0 Release 6)**

---



---

Reference

RTS/TSGS-0532172v640

---

Keywords

GSM, UMTS

**ETSI**

650 Route des Lucioles  
F-06921 Sophia Antipolis Cedex - FRANCE

Tel.: +33 4 92 94 42 00 Fax: +33 4 93 65 47 16

Siret N° 348 623 562 00017 - NAF 742 C  
Association à but non lucratif enregistrée à la  
Sous-Préfecture de Grasse (06) N° 7803/88

---

**Important notice**

Individual copies of the present document can be downloaded from:

<http://www.etsi.org>

The present document may be made available in more than one electronic version or in print. In any case of existing or perceived difference in contents between such versions, the reference version is the Portable Document Format (PDF). In case of dispute, the reference shall be the printing on ETSI printers of the PDF version kept on a specific network drive within ETSI Secretariat.

Users of the present document should be aware that the document may be subject to revision or change of status. Information on the current status of this and other ETSI documents is available at

<http://portal.etsi.org/tb/status/status.asp>

If you find errors in the present document, please send your comment to one of the following services:

[http://portal.etsi.org/chaicor/ETSI\\_support.asp](http://portal.etsi.org/chaicor/ETSI_support.asp)

---

**Copyright Notification**

No part may be reproduced except as authorized by written permission.  
The copyright and the foregoing restriction extend to reproduction in all media.

© European Telecommunications Standards Institute 2007.  
All rights reserved.

DECT<sup>TM</sup>, PLUGTESTS<sup>TM</sup> and UMTS<sup>TM</sup> are Trade Marks of ETSI registered for the benefit of its Members.  
TIPHON<sup>TM</sup> and the TIPHON logo are Trade Marks currently being registered by ETSI for the benefit of its Members.  
3GPP<sup>TM</sup> is a Trade Mark of ETSI registered for the benefit of its Members and of the 3GPP Organizational Partners.

---

## Intellectual Property Rights

IPRs essential or potentially essential to the present document may have been declared to ETSI. The information pertaining to these essential IPRs, if any, is publicly available for **ETSI members and non-members**, and can be found in ETSI SR 000 314: *"Intellectual Property Rights (IPRs); Essential, or potentially Essential, IPRs notified to ETSI in respect of ETSI standards"*, which is available from the ETSI Secretariat. Latest updates are available on the ETSI Web server (<http://webapp.etsi.org/IPR/home.asp>).

Pursuant to the ETSI IPR Policy, no investigation, including IPR searches, has been carried out by ETSI. No guarantee can be given as to the existence of other IPRs not referenced in ETSI SR 000 314 (or the updates on the ETSI Web server) which are, or may be, or may become, essential to the present document.

---

## Foreword

This Technical Specification (TS) has been produced by ETSI 3rd Generation Partnership Project (3GPP).

The present document may refer to technical specifications or reports using their 3GPP identities, UMTS identities or GSM identities. These should be interpreted as being references to the corresponding ETSI deliverables.

The cross reference between GSM, UMTS, 3GPP and ETSI identities can be found under <http://webapp.etsi.org/key/queryform.asp>.

# Contents

Intellectual Property Rights .....	2
Foreword.....	2
Foreword.....	5
Introduction .....	5
1 Scope .....	6
2 References .....	6
3 Definitions and abbreviations.....	6
3.1 Definitions .....	6
3.2 Abbreviations .....	6
4 Compliance rules.....	7
5 Modelling approach.....	7
6 Information Object Classes .....	8
6.1 Imported information entities and local labels .....	8
6.2 Class diagram .....	8
6.2.1 Attributes and relationships .....	8
6.2.2 Inheritance .....	10
6.3 Information Object Class definitions .....	11
6.3.1 SuMService .....	11
6.3.1.1 Definition .....	11
6.3.1.2 Attributes.....	12
6.3.2 CSService.....	12
6.3.2.1 Definition .....	12
6.3.2.2 Attributes.....	13
6.3.2.3 Attribute constraints .....	13
6.3.3 PSService.....	14
6.3.3.1 Definition .....	14
6.3.3.2 Attributes.....	15
6.3.3.3 Attribute constraints .....	16
6.3.4 IMSService .....	16
6.3.4.1 Definition .....	16
6.3.4.2 Attributes.....	16
6.3.4.3 Attribute constraints .....	16
6.3.5 SuMSubscribedService.....	17
6.3.5.1 Definition .....	17
6.3.5.2 Attributes.....	17
6.3.6 CSSubscribedService.....	17
6.3.6.1 Definition .....	17
6.3.6.2 Attributes.....	18
6.3.6.3 Attribute constraints .....	18
6.3.7 PSSubscribedService.....	19
6.3.7.1 Definition .....	19
6.3.7.2 Attributes.....	20
6.3.7.3 Attribute constraints .....	21
6.3.8 IMSSubscribedService.....	21
6.3.8.1 Definition .....	21
6.3.8.2 Attributes.....	21
6.3.8.3 Attribute constraints .....	21
6.3.9 SuMSubscriberProfile.....	21
6.3.9.1 Definition .....	21
6.3.9.2 Attributes.....	22
6.3.10 SuMSubscriptionProfile.....	22

6.3.10.1	Definition .....	22
6.3.10.2	Attributes.....	22
6.3.10.3	Attribute constraints .....	22
6.3.11	SuMServiceProfile.....	23
6.3.11.1	Definition .....	23
6.3.11.2	Attributes.....	23
6.3.12	CSServiceProfile .....	23
6.3.12.1	Definition .....	23
6.3.12.2	Attributes.....	23
6.3.12.3	Attribute constraints .....	25
6.3.13	PSServiceProfile .....	26
6.3.13.1	Definition .....	26
6.3.13.2	Attributes.....	27
6.3.13.3	Attribute constraints .....	28
6.3.14	IMSServiceProfile.....	30
6.3.14.1	Definition .....	30
6.3.14.2	Attributes.....	30
6.3.14.3	Attribute constraints .....	30
6.3.15	ServiceProviderFunction .....	31
6.3.15.1	Definition .....	31
6.3.15.2	Attributes.....	31
6.3.16	SubscriptionFunction.....	31
6.3.16.1	Definition .....	31
6.3.16.2	Attributes.....	31
6.3.17	SuMCSSupplService.....	32
6.3.17.1	Definition .....	32
6.3.17.2	Attributes.....	32
6.3.17.3	Attribute constraints .....	32
6.3.18	SuMPSSupplService.....	33
6.3.18.1	Definition .....	33
6.3.18.2	Attributes.....	33
6.3.18.3	Attribute constraints .....	33
6.4	Information relationship definitions .....	34
6.4.1	Agreement.....	34
6.4.1.1	Definition .....	34
6.4.1.2	Roles .....	34
6.4.1.3	Constraints .....	34
6.4.2	Description.....	34
6.4.2.1	Definition .....	34
6.4.2.2	Roles .....	34
6.4.2.3	Constraints .....	34
6.5	Information attribute definitions.....	35
6.5.1	Definitions and legal values.....	35
<b>Annex A (informative):</b>	<b>Change history .....</b>	<b>39</b>
History .....		40

---

## Foreword

This Technical Specification has been produced by the 3<sup>rd</sup> Generation Partnership Project (3GPP).

The contents of the present document are subject to continuing work within the TSG and may change following formal TSG approval. Should the TSG modify the contents of the present document, it will be re-released by the TSG with an identifying change of release date and an increase in version number as follows:

Version x.y.z

where:

x the first digit:

- 1 presented to TSG for information;
- 2 presented to TSG for approval;
- 3 or greater indicates TSG approved document under change control.

y the second digit is incremented for all changes of substance, i.e. technical enhancements, corrections, updates, etc.

z the third digit is incremented when editorial only changes have been incorporated in the document.

---

## Introduction

The interface Itf-N, defined in 3GPP TS 32.102 [2], is built up by a number of Integration Reference Points (IRPs) and a related Name Convention, which realise the functional capabilities over this interface. The basic structure of the IRPs is defined in 3GPP TS 32.101 [1] and 3GPP TS 32.102 [2].

The present document is part of a TS-family covering the 3<sup>rd</sup> Generation Partnership Project: Technical Specification Group Services and System Aspects; Telecommunication management, as identified below:

TS 32.140: "Subscription Management (SuM) requirements".

TS 32.141: "Subscription Management (SuM) architecture".

TS 32.171: "Subscription Management (SuM) Network Resource Model (NRM) Integration Reference Point (IRP): Requirements".

**TS 32.172: "Subscription Management (SuM) Network Resource Model (NRM) Integration Reference Point (IRP): Information Service (IS)".**

TS 32.175: "Subscription Management (SuM) Network Resource Model (NRM) Integration Reference Point (IRP): eXtensible Markup Language (XML) definition".

---

# 1 Scope

The present document defines the Network Resources Model (NRM) for the SuM IRP.

---

## 2 References

The following documents contain provisions which, through reference in this text, constitute provisions of the present document.

- References are either specific (identified by date of publication, edition number, version number, etc.) or non-specific.
- For a specific reference, subsequent revisions do not apply.
- For a non-specific reference, the latest version applies. In the case of a reference to a 3GPP document (including a GSM document), a non-specific reference implicitly refers to the latest version of that document *in the same Release as the present document*.

[1] 3GPP TS 32.101: "Telecommunication management; Principles and high level requirements".

[2] 3GPP TS 32.102: "Telecommunication management; Architecture".

[3] 3GPP TS 32.140: "Telecommunication management; Subscription Management (SuM) Requirements".

[4] 3GPP TS 32.141: "Telecommunication management; Subscription Management (SuM) Architecture."

[5] 3GPP TS 32.171: "Telecommunication management; Subscription Management (SuM) Network Resource Model (NRM) Integration Reference Point (IRP): Requirements".

[6] 3GPP TS 32.622: "Telecommunication management; Configuration Management (CM); Generic network resources Integration Reference Point (IRP): Network Resource Model (NRM)".

[7] 3GPP TS 23.008: "Organization of subscriber data".

---

## 3 Definitions and abbreviations

### 3.1 Definitions

For the purposes of the present document, the following terms and definitions apply. For terms and definitions not found here, please refer to 3GPP TS 32.101 [1], 3GPP TS 32.102 [2], 3GPP TS 32.140 [3] and TS 32.141 [4].

**Subscription Profile:** see 3GPP TS 32.140 [3].

**Subscription Profile Component:** see 3GPP TS 32.140 [3].

**Subscription Profile Component Definition:** specifies a Subscription Profile Component.

**Subscriber Profile:** see 3GPP TS 32.140 [3].

### 3.2 Abbreviations

For the purposes of the present document the following and the abbreviations in 32.101 [1], 32.102 [2], 32.140 [3] and 32.141 [4] apply.

EM                    Element Manager

IOC	Information Object Class
IRP	Integration Reference Point
MOC	Managed Object Class
NE	Network Element
SuM	Subscription Management

---

## 4 Compliance rules

The following defines the meaning of Mandatory and Optional IOC attributes and associations between IOCs, in Solution Sets to the IRP defined by the present document.

Solution Sets to the SuM IRP:

- The IRPManager shall support all Mandatory attributes/associations. The IRPManager shall be prepared to receive information related to Mandatory as well as Optional attributes/associations without failure; however the IRPManager does not have to support handling of the Optional attributes/associations.
- The IRPAgent shall support all Mandatory attributes/associations. It may support Optional attributes/associations.

An IRPAgent that incorporates vendor-specific extensions shall support normal communication with a 3GPP SA5-compliant IRPManager with respect to all Mandatory and Optional Managed Object Classes (MOCs), attributes, associations, operations, parameters and notifications without requiring the IRPManager to have any knowledge of the extensions.

---

## 5 Modelling approach

The modelling approach adopted and used in this IRP is described in 3GPP TS 32.622 [6].



# 6 Information Object Classes

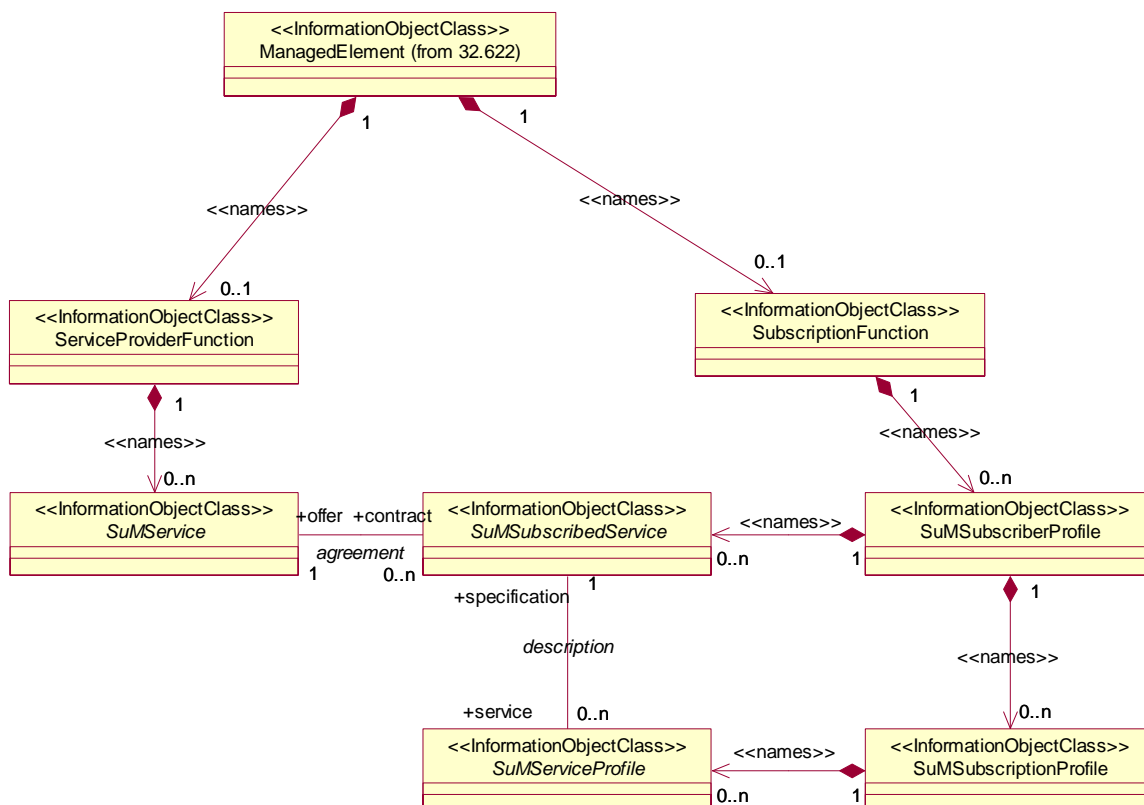
## 6.1 Imported information entities and local labels

Label reference	Local label
32.622 [6], information object class, ManagedFunction	ManagedFunction
32.622 [6], information object class, ManagedElement	ManagedElement

## 6.2 Class diagram

### 6.2.1 Attributes and relationships

This clause depicts the set of IOCs that encapsulate information relevant for this service. This sub-clause provides the overview of all information object classes in UML. Subsequent clauses provide more detailed specification of various aspects of these Information Object Classes (IOCs).



NOTE: The listed cardinality numbers represent transient as well as steady-state numbers, and reflect all managed object creation and deletion scenarios.

Figure 1.a: SuM NRM Containment/Naming and Association diagram

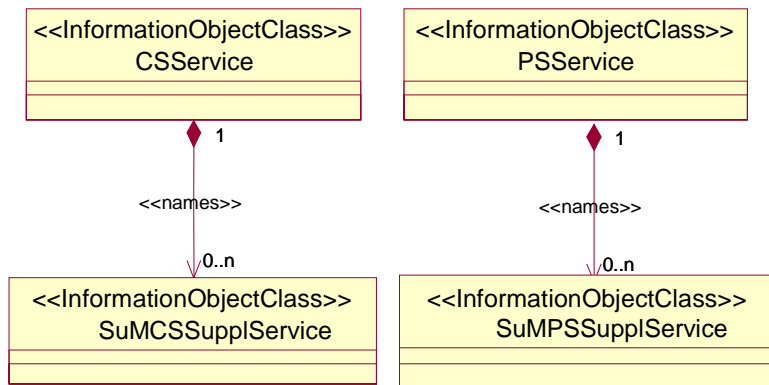


Figure 1.b: SuM Supplementary Service NRM Containment/Naming and Association diagram 1

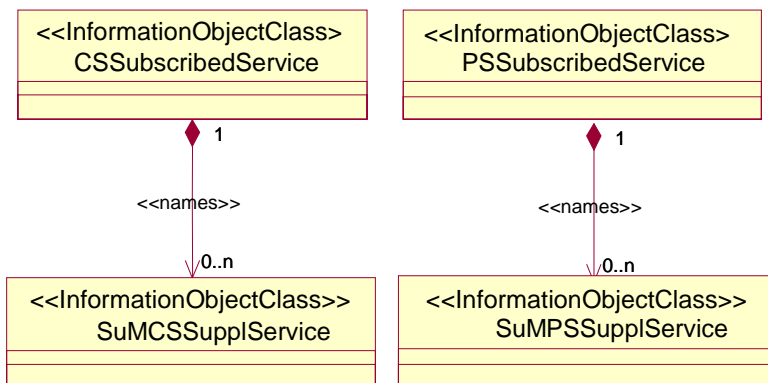


Figure 1.c: SuM Supplementary Service NRM Containment/Naming and Association diagram 2

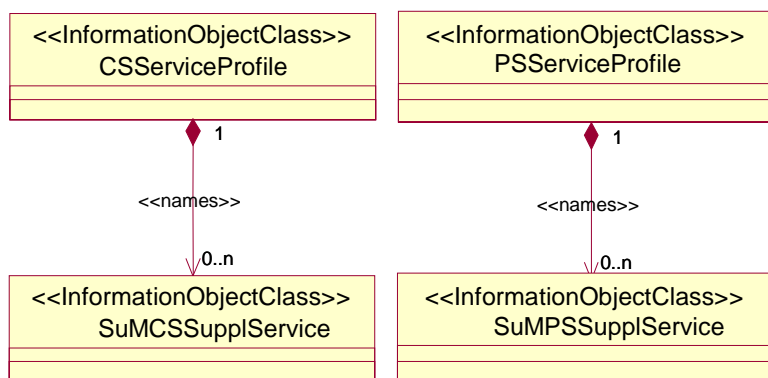


Figure 1.d: SuM Supplementary Service NRM Containment/Naming and Association diagram 3

## 6.2.2 Inheritance

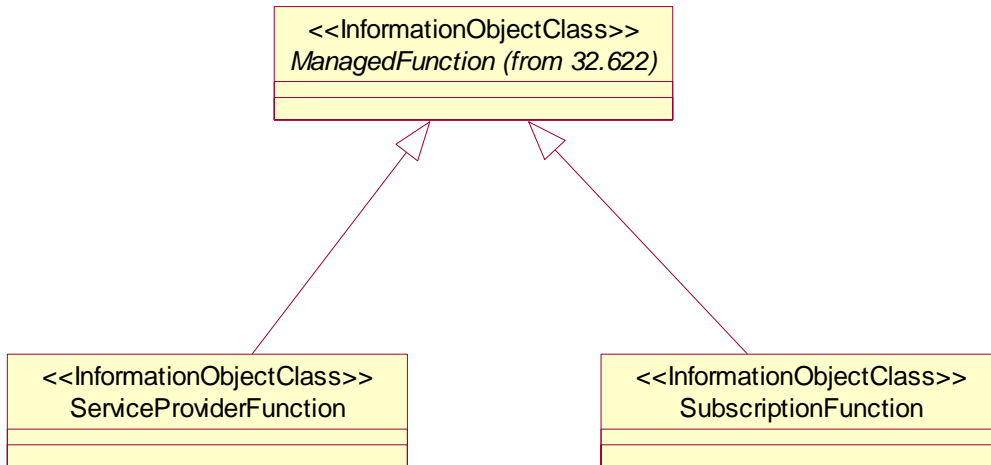


Figure 2a: SuM NRM Inheritance Hierarchy 1

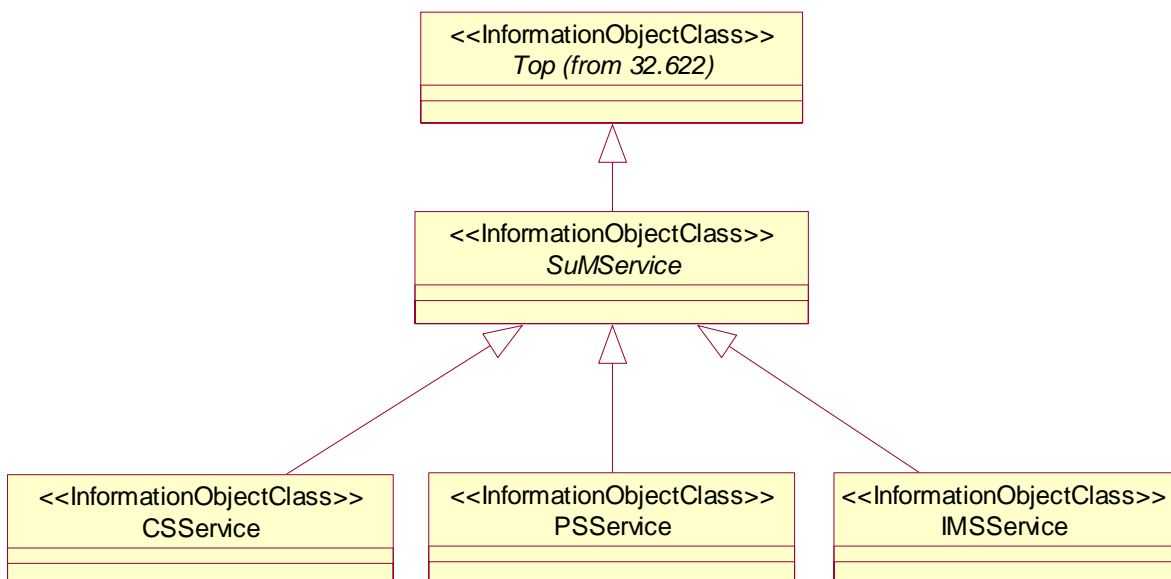


Figure 2b: SuM NRM Inheritance Hierarchy 2

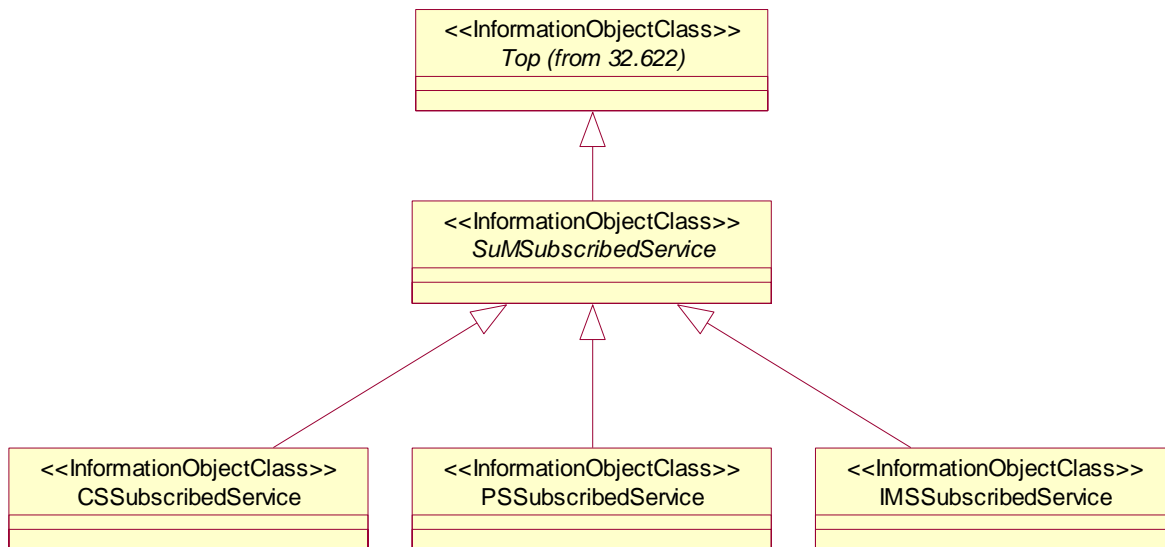


Figure 2c: SuM NRM Inheritance Hierarchy 3

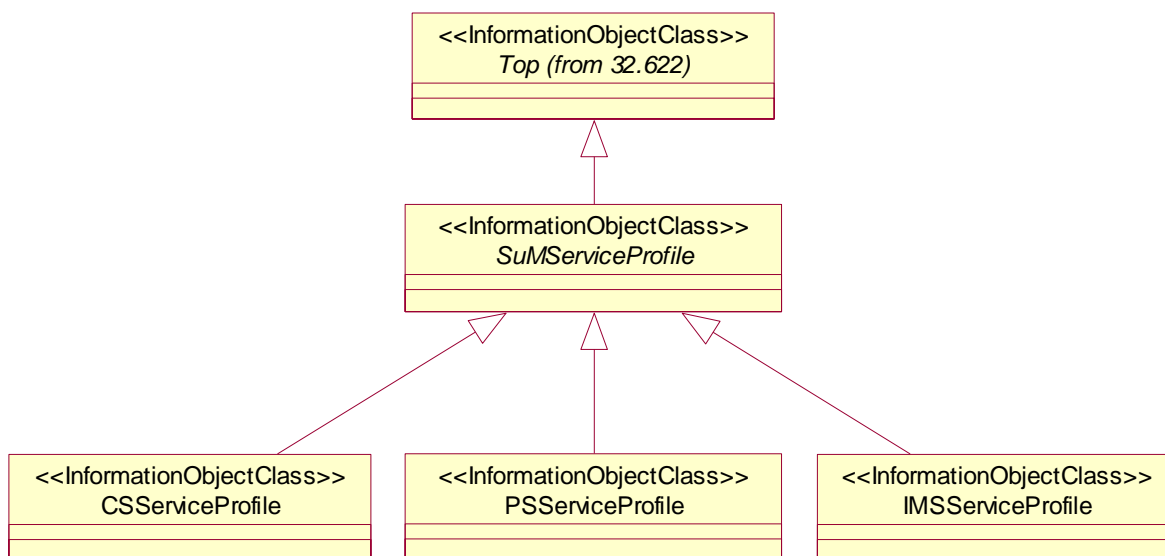


Figure 2d: SuM NRM Inheritance Hierarchy 4

## 6.3 Information Object Class definitions

### 6.3.1 SuMService

#### 6.3.1.1 Definition

This is an abstract IOC provided for sub-classing only. It provides attribute(s) that are common to Services IOCs.

### 6.3.1.2 Attributes

#### Attributes of SuMService

Attribute name	Visibility	Support Qualifier	Read Qualifier	Write Qualifier
agreement-contract	+	M	M	O

### 6.3.2 CSService

#### 6.3.2.1 Definition

In this management context:

- a) This class represents a CS service (see 3GPP TS 23.008 [7]) provided by a service provider
- b) This class contains the valid parameters that define the CS service from subscription point of view.

## 6.3.2.2 Attributes

## Attributes of CSService

Attribute name	Visibility	Support Qualifier	Read Qualifier	Write Qualifier
cSServiceId	+	M	M	-
networkAccessMode	+	M	M	M
basicMSISDNIndicator	+	O	M	M
mSISDNAlertIndicator	+	O	M	M
subscriptionRestriction	+	O	M	M
rSZIlists	+	O	M	M
lSAIdentity	+	O	M	M
lSAPriority	+	O	M	M
lSAPreferentialAccessIndicator	+	O	M	M
lSAActiveModeSupportIndicator	+	O	M	M
lSAOnlyAccessIndicator	+	O	M	M
lSAActiveModeIndicator	+	O	M	M
vPLMNIdentifier	+	O	M	M
accessRestrictionData	+	O	M	M
privacyExceptionList	+	O	M	M
gMLCNumbers	+	O	M	M
mOLRLList	+	O	M	M
serviceTypes	+	O	M	M
mobileStationCategory	+	M	M	M
lMUIIdentifier	+	M	M	M
subscriberStatus	+	M	M	M
gsmSCFaddresslistForODB	+	M	M	M
provisionOfBearerService	+	M	M	M
provisionOfTeleservice	+	M	M	M
bAllocation	+	O	M	M
barringOfOutgoingCalls	+	O	M	M
barringOfIncomingCalls	+	O	M	M
barringOfRoaming	+	O	M	M
barringOfPremiumRateCalls	+	O	M	M
barringOfSupplementaryServiceManagement	+	O	M	M
barringOfRegistrationOfCallForwarding	+	O	M	M
barringOfInvocationOfCallTransfer	+	O	M	M
operatorDeterminedBarringPLMNspecificData	+	O	M	M
vGCSGroupMembershipList	+	O	M	M
vBSGroupMembershipList	+	O	M	M
broadcastCallInitiationAllowedList	+	O	M	M
originatingCAMELSubscriptionInformationOCSCI	+	O	M	M
terminatingCAMELSubscriptionInformationTCSI	+	O	M	M
vMSCTerminatingCAMELSubscriptionInformationVTCSI	+	O	M	M
locationInformationSubscriberStateInformation	+	O	M	M
uSSDCAMELSubscriptionInformationUCSCI	+	O	M	M
sSInvocationNotificationSSCSI	+	O	M	M
translationInformationFlagTIFCSI	+	O	M	M
dialledServiceCAMELSubscriptionInformationDCSCI	+	O	M	M
uSSDGeneralCAMELServiceInformationUGCSI	+	O	M	M
shortMessageServiceCAMELSubscriptionInformationMOSMSCSI	+	O	M	M
shortMessageServiceCAMELSubscriptionInformationMTSMSCSI	+	O	M	M
mTSMSCSIVLRNegotiatedCAMELCapabilityHandling	+	O	M	M
gsmSCFaddressforCSI	+	O	M	M
iSTAlertTimer	+	O	M	M
cSAllocationRetentionpriority	+	O	M	M

## 6.3.2.3 Attribute constraints

The optional attributes shall be supported for the following criteria: The NE supports the parameter (see TS 23.008 [7]).

### 6.3.3 PSService

#### 6.3.3.1 Definition

In this management context:

- a) This class represents a PS service (see 3GPP TS 23.008 [7]) provided by a service provider
- b) This class contains the valid parameters that define the PS service from subscription point of view.

## 6.3.3.2 Attributes

## Attributes of PSService

Attribute name	Visibility	Support Qualifier	Read Qualifier	Write Qualifier
pSServiceId	+	M	M	-
networkAccessMode	+	M	M	M
basicMSISDNIndicator	+	O	M	M
mSISDNAlertIndicator	+	O	M	M
subscriptionRestriction	+	O	M	M
rSZIlists	+	O	M	M
lSAIdentity	+	O	M	M
lSAPriority	+	O	M	M
lSAPreferentialAccessIndicator	+	O	M	M
lSAActiveModeSupportIndicator	+	O	M	M
lSAOnlyAccessIndicator	+	O	M	M
lSAActiveModeIndicator	+	O	M	M
vPLMNIIdentifier	+	O	M	M
accessRestrictionData	+	O	M	M
privacyExceptionList	+	O	M	M
gMLCNumbers	+	O	M	M
mOLRList	+	O	M	M
serviceTypes	+	O	M	M
gGSNNumber	+	O	M	M
provisionofTeleservice	+	O	M	M
transferofSMoption	+	M	M	M
barringofPacketOrientedServices	+	O	M	M
pDPType	+	O	M	M
pDPAddress	+	O	M	M
accessPointName	+	O	M	M
vPLMNAddressAllowed	+	O	M	M
qualityofServiceSubscribed	+	O	M	M
pDPContextChargingCharacteristics	+	O	M	M
gPRSCAMELSubscriptionInformationGPRSCSI	+	O	M	M
mOShortMessageServiceCAMELSubscriptionInformationMOSMSCSI	+	O	M	M
mTShortMessageServiceCAMELSubscriptionInformationMTSMSCSI	+	O	M	M
mOSMSCSISGSNNegotiatedCAMELCapabilityHandling	+	O	M	M
mTSMSCSISGSNNegotiatedCAMELCapabilityHandling	+	O	M	M
mobilityManagementforGPRSeventnotificationMGCSI	+	O	M	M
mGCSINegotiatedCAMELCapabilityHandling	+	O	M	M
gsmSCFAddressforCSI	+	O	M	M
subscribedChargingCharacteristics	+	O	M	M
w-APN	+	O	M	M
listofauthorizedvisitednetworkidentifiers	+	O	M	M
wLANUERemoteIPAddress	+	O	M	M
wLANAccess	+	O	M	M
wLANTunnelling	+	O	M	M
wLANDirectIPAccess	+	O	M	M
wAPNAuthorised	+	O	M	M
w-APNBarringType	+	O	M	M
w-APNChargingData	+	O	M	M
wLANUERemoteIPAddress	+	O	M	M
accessIndependenceFlag	+	O	M	M
i-WLANAccessType	+	O	M	M
chargingData	+	O	M	M
chargingCharacteristics	+	O	M	M
primaryOCSCargingFunctionName	+	O	M	M
secondaryOCSCargingFunctionName	+	O	M	M
primaryChargingCollectionFunctionName	+	O	M	M
secondaryChargingCollectionFunctionName	+	O	M	M



### 6.3.3.3 Attribute constraints

The optional attributes shall be supported for the following criteria: The NE supports the parameter (See TS 23.008 [7]).

## 6.3.4 IMSService

### 6.3.4.1 Definition

In this management context:

- a) This class represents a IMS service (see 3GPP TS 23.008 [7]) provided by a service provider
- b) This class contains the valid parameters that define the ims service from subscription point of view.

### 6.3.4.2 Attributes

#### Attributes of IMSService

Attribute name	Visibility	Support Qualifier	Read Qualifier	Write Qualifier
imSServiceId	+	M	M	-
barringIndication	+	M	M	M
listofauthorizedvisitednetworkidentifiers	+	M	M	M
registrationStatus	+	M	M	M
sCSCFName	+	M	M	M
serverCapabilities	+	O	M	M
subscribedMediaProfileIdentifier	+	O	M	M
initialFilterCriteria	+	O	M	M
applicationServerInformation	+	O	M	M
serviceIndication	+	M	M	M
primaryEventChargingFunctionName	+	O	M	M
secondaryEventChargingFunctionName	+	O	M	M
primaryChargingCollectionFunctionName	+	M	M	M
secondaryChargingCollectionFunctionName	+	O	M	M
gsmSCFaddressforIMCSI	+	O	M	M
oIMCSI	+	O	M	M
vTIMCSI	+	O	M	M
dIMCS	+	O	M	M
gAAServiceType	+	O	M	M
gAAServiceIdentifier	+	O	M	M
gBAUserSecuritySettings	+	O	M	M
userSecuritySetting	+	O	M	M
userPublicIdentity	+	O	M	M
gAAAuthorizationflag	+	O	M	M
keyLifetime	+	O	M	M
uICCSecuritySetting	+	O	M	M
nAFGroupIdentity	+	O	M	M

### 6.3.4.3 Attribute constraints

The optional attributes shall be supported for the following criteria: The NE supports the parameter (See TS 23.008 [7]).

## 6.3.5 SuMSubscribedService

### 6.3.5.1 Definition

This is an abstract IOC provided for sub-classing only. It provides attribute(s) that are common to Subscribed Services IOCs.

### 6.3.5.2 Attributes

**Attributes of SuMSubscribedService**

Attribute name	Visibility	Support Qualifier	Read Qualifier	Write Qualifier
description-service	+	M	M	O
agreement-offer	+	M	M	O

## 6.3.6 CSSubscribedService

### 6.3.6.1 Definition

In this management context:

- a) This class represents subscription to a CS service (see 3GPP TS 23.008 [7]) for a subscriber. The entire set of CS subscribed services owned by a subscriber constitutes the subscriber's Subscribed Services Profile for CS services.
- b) This class contains the agreed (between the Subscriber and the Service Provider) parameter settings for a CS service that a Subscriber subscribes to.

## 6.3.6.2 Attributes

## Attributes of CSSubscribedService

Attribute name	Visibility	Support Qualifier	Read Qualifier	Write Qualifier
cSSubscribedServiceId	+	M	M	-
networkAccessMode	+	M	M	M
basicMSISDNIndicator	+	O	M	M
mSISDNAlertIndicator	+	O	M	M
subscriptionRestriction	+	O	M	M
rSZIlists	+	O	M	M
lSAIdentity	+	O	M	M
lSAPriority	+	O	M	M
lSAPreferentialAccessIndicator	+	O	M	M
lSAActiveModeSupportIndicator	+	O	M	M
lSAOnlyAccessIndicator	+	O	M	M
lSAActiveModeIndicator	+	O	M	M
vPLMNIdentifier	+	O	M	M
accessRestrictionData	+	O	M	M
privacyExceptionList	+	O	M	M
gMLCNumbers	+	O	M	M
mOLRList	+	O	M	M
serviceTypes	+	O	M	M
mobileStationCategory	+	M	M	M
lMUIIdentifier	+	M	M	M
subscriberStatus	+	M	M	M
gsmSCFaddresslistForODB	+	M	M	M
provisionOfBearerService	+	M	M	M
provisionOfTeleservice	+	M	M	M
bAllocation	+	O	M	M
barringOfOutgoingCalls	+	O	M	M
barringOfIncomingCalls	+	O	M	M
barringOfRoaming	+	O	M	M
barringOfPremiumRateCalls	+	O	M	M
barringOfSupplementaryServiceManagement	+	O	M	M
barringOfRegistrationOfCallForwarding	+	O	M	M
barringOfInvocationOfCallTransfer	+	O	M	M
operatorDeterminedBarringPLMNspecificData	+	O	M	M
vGCSGroupMembershipList	+	O	M	M
vBSGroupMembershipList	+	O	M	M
broadcastCallInitiationAllowedList	+	O	M	M
originatingCAMELSubscriptionInformationOCSEI	+	O	M	M
terminatingCAMELSubscriptionInformationTCSEI	+	O	M	M
vMSCTerminatingCAMELSubscriptionInformationVTCSSEI	+	O	M	M
locationInformation/SubscriberStateInformation	+	O	M	M
uSSDCAMELSubscriptionInformationUCSEI	+	O	M	M
sSInvocationNotificationSSCSSEI	+	O	M	M
translationInformationFlagTIFCSSEI	+	O	M	M
dialledServiceCAMELSubscriptionInformationDCSEI	+	O	M	M
uSSDGeneralCAMELServiceInformationUGCSSEI	+	O	M	M
shortMessageServiceCAMELSubscriptionInformationMOSMSCSEI	+	O	M	M
shortMessageServiceCAMELSubscriptionInformationMTSMSCSEI	+	O	M	M
mTSMSCSIVLRNegotiatedCAMELCapabilityHandling	+	O	M	M
gsmSCFaddressforCSSEI	+	O	M	M
iSTAlertTimer	+	O	M	M
cSAllocationRetentionpriority	+	O	M	M

## 6.3.6.3 Attribute constraints

The optional attributes shall be supported for the following criteria: The NE supports the parameter (See TS 23.008 [7]).

## 6.3.7 PSSubscribedService

### 6.3.7.1 Definition

In this management context:

- a) This class represents subscription to a PS service (see 3GPP TS 23.008 [7]) for a subscriber. The entire set of PS subscribed services owned by a subscriber constitutes the subscriber's Subscribed Services Profile for PS services.
- b) This class contains the agreed (between the Subscriber and the Service Provider) parameter settings for a PS service that a Subscriber subscribes to.

## 6.3.7.2 Attributes

## Attributes of PSubscribedService

Attribute name	Visibility	Support Qualifier	Read Qualifier	Write Qualifier
pSubscribedServiceId	+	M	M	-
networkAccessMode	+	M	M	M
basicMSISDNIndicator	+	O	M	M
mSISDNAlertIndicator	+	O	M	M
subscriptionRestriction	+	O	M	M
rSIZIlists	+	O	M	M
lSAIdentity	+	O	M	M
lSAPriority	+	O	M	M
lSAPreferentialAccessIndicator	+	O	M	M
lSAActiveModeSupportIndicator	+	O	M	M
lSAOnlyAccessIndicator	+	O	M	M
lSAActiveModeIndicator	+	O	M	M
vPLMNIIdentifier	+	O	M	M
accessRestrictionData	+	O	M	M
privacyExceptionList	+	O	M	M
gMLCNumbers	+	O	M	M
mOLRList	+	O	M	M
serviceTypes	+	O	M	M
gGSNNumber	+	O	M	M
provisionofTeleservice	+	O	M	M
transferofSMoption	+	M	M	M
barringofPacketOrientedServices	+	O	M	M
pDPType	+	O	M	M
pDPAddress	+	O	M	M
accessPointName	+	O	M	M
vPLMNAddressAllowed	+	O	M	M
qualityofServiceSubscribed	+	O	M	M
pDPContextChargingCharacteristics	+	O	M	M
gPRSCAMELSubscriptionInformationGPRSCSI	+	O	M	M
mOShortMessageServiceCAMELSubscriptionInformationMOSMSCSI	+	O	M	M
mTShortMessageServiceCAMELSubscriptionInformationMTSMSCSI	+	O	M	M
mOSMSCSISGSNNegotiatedCAMELCapabilityHandling	+	O	M	M
mTSMSCSISGSNNegotiatedCAMELCapabilityHandling	+	O	M	M
mobilityManagementforGPRSeventnotificationMGCSI	+	O	M	M
mGCSINegotiatedCAMELCapabilityHandling	+	O	M	M
gsmSCFAddressforCSI	+	O	M	M
subscribedChargingCharacteristics	+	O	M	M
w-APN	+	O	M	M
listofauthorizedvisitednetworkidentifiers	+	O	M	M
wLANUERemoteIPAddress	+	O	M	M
wLANAccess	+	O	M	M
wLANTunnelling	+	O	M	M
wLANDirectIPAccess	+	O	M	M
wAPNAuthorised	+	O	M	M
w-APNBarringType	+	O	M	M
w-APNChargingData	+	O	M	M
wLANUERemoteIPAddress	+	O	M	M
accessIndependenceFlag	+	O	M	M
i-WLANAccessType	+	O	M	M
chargingData	+	O	M	M
chargingCharacteristics	+	O	M	M
primaryOCChargingFunctionName	+	O	M	M
secondaryOCChargingFunctionName	+	O	M	M
primaryChargingCollectionFunctionName	+	O	M	M
secondaryChargingCollectionFunctionName	+	O	M	M

### 6.3.7.3 Attribute constraints

The optional attributes shall be supported for the following criteria: The NE supports the parameter (see TS 23.008 [7]).

## 6.3.8 IMSSubscribedService

### 6.3.8.1 Definition

In this management context:

- a) This class represents subscription to an ims (see 3GPP TS 23.008 [7]) service for a subscriber. The entire set of ims subscribed services owned by a subscriber constitutes the subscriber's Subscribed Services Profile for PS services.
- b) This class contains the agreed (between the Subscriber and the Service Provider) parameter settings for an ims service that a Subscriber subscribes to.

### 6.3.8.2 Attributes

#### Attributes of IMSSubscribedService

Attribute name	Visibility	Support Qualifier	Read Qualifier	Write Qualifier
imSSubscribedServiceId	+	M	M	-
barringIndication	+	M	M	M
listofauthorizedvisitednetworkidentifiers	+	M	M	M
registrationStatus	+	M	M	M
sCSCFName	+	M	M	M
serverCapabilities	+	O	M	M
subscribedMediaProfileIdentifier	+	O	M	M
initialFilterCriteria	+	O	M	M
applicationServerInformation	+	O	M	M
serviceIndication	+	M	M	M
primaryEventChargingFunctionName	+	O	M	M
secondaryEventChargingFunctionName	+	O	M	M
primaryChargingCollectionFunctionName	+	M	M	M
secondaryChargingCollectionFunctionName	+	O	M	M
gsmSCFaddressforIMCSI	+	O	M	M
oIMCSI	+	O	M	M
vTIMCSI	+	O	M	M
dIMCS	+	O	M	M
gAAServiceType	+	O	M	M
gAAServiceIdentifier	+	O	M	M
gBAUserSecuritySettings	+	O	M	M
userSecuritySetting	+	O	M	M
userPublicIdentity	+	O	M	M
gAAAuthorizationflag	+	O	M	M
keyLifetime	+	O	M	M
uICCSecuritySetting	+	O	M	M
nAFGroupIdentity	+	O	M	M

### 6.3.8.3 Attribute constraints

The optional attributes shall be supported for the following criteria: The NE supports the parameter (see TS 23.008 [7]).

## 6.3.9 SuMSubscriberProfile

### 6.3.9.1 Definition

In this management context:

- a) This class represents the Subscriber Profile.
- b) This class contains the Subscribed Services for a subscriber
- c) This class contains the users for a subscriber.

### 6.3.9.2 Attributes

**Attributes of SuMSubscriberProfile**

Attribute name	Visibility	Support Qualifier	Read Qualifier	Write Qualifier
suMSubscriberProfileId	+	M	M	-
suMSubscriberProfileInfo	+	M	M	O

## 6.3.10 SuMSubscriptionProfile

### 6.3.10.1 Definition

In this management context:

- a) This class represents user's subscription profile of the services contracted by a subscriber.
- b) This class contains Service Profiles for the services contracted by a subscriber and assigned to a user.

### 6.3.10.2 Attributes

**Attributes of SuMSubscriptionProfile**

Attribute name	Visibility	Support Qualifier	Read Qualifier	Write Qualifier
suMSubscriptionProfileId	+	M	M	-
iMSI	+	M	M	M
mSISDN	+	M	M	M
multinumberingMSISDNs	+	M	M	M
iMEISV	+	O	M	-
privateUserIdentity	+	M	M	M
publicIdentity	+	M	M	M

### 6.3.10.3 Attribute constraints

The optional attributes shall be supported for the following criteria: The NE supports the parameter (see TS 23.008 [7]).

## 6.3.11 SuMServiceProfile

### 6.3.11.1 Definition

This is an abstract IOC provided for sub-classing only. It provides attribute(s) that are common to Service Profiles IOCs.

### 6.3.11.2 Attributes

**Attributes of SuMServiceProfile**

Attribute name	Visibility	Support Qualifier	Read Qualifier	Write Qualifier
description-specification	+	M	M	O

## 6.3.12 CSServiceProfile

### 6.3.12.1 Definition

In this management context:

- This class represents for a subscribed CS service (see 3GPP TS 23.008 [7]) the service preferences and settings chosen for a user.

### 6.3.12.2 Attributes

**Attributes of CSServiceProfile**

Attribute name	Visibility	Support Qualifier	Read Qualifier	Write Qualifier
cSServiceProfileId	+	M	M	O
networkAccessMode	+	M	M	M
basicMSISDNIndicator	+	O	M	M
mSISDNAlertIndicator	+	O	M	M
vLRNNumber	+	M	M	-
mSCNumber	+	M	M	-
subscriptionRestriction	+	O	M	M
rSZIlists	+	O	M	M
mSCAreaRestrictedFlag	+	M	M	-
oDBinducedBarringData	+	O	M	-
roamingRestrictionDueToUnsupportedFeature	+	M	M	-
lSAIdentity	+	O	M	M
lSAPriority	+	O	M	M
lSAPreferentialAccess Indicator	+	O	M	M
lSAActiveModeSupportIndicator	+	O	M	M
lSAOnlyAccessIndicator	+	O	M	M
lSAActiveModeIndicator	+	O	M	M
vPLMNIdentifier	+	O	M	M
accessRestrictionData	+	O	M	M
privacyExceptionList	+	O	M	M
gMLCNumbers	+	O	M	M
mOLRList	+	O	M	M
serviceTypes	+	O	M	M
ageIndicator	+	O	M	-
lMSI	+	M	M	-
mobileStationCategory	+	M	M	M
lMUIIdentifier	+	M	M	M
mNRR	+	M	M	-
subscriberStatus	+	M	M	M
notificationToCSEFlagForODB	+	M	M	-
gsmSCFaddresslistForODB	+	M	M	M



Attribute name	Visibility	Support Qualifier	Read Qualifier	Write Qualifier
messagesWaitingData	+	M	M	-
mobileStationNotReachableFlag	+	M	M	-
memoryCapacityExceededFlag	+	M	M	-
traceReference	+	O	M	-
traceType	+	O	M	-
operationsSystemsIdentity	+	O	M	-
hLRTraceType	+	O	M	-
mAPErrorOnTrace	+	O	M	-
traceActivatedInVLR	+	O	M	-
provisionOfBearerService	+	M	M	M
provisionOfTeleservice	+	M	M	M
bAllocation	+	O	M	M
checkSSIndicator	+	M	M	-
mSPurgedForNonGPRSFlag	+	M	M	-
barringOfOutgoingCalls	+	O	M	M
barringOfIncomingCalls	+	O	M	M
barringOfRoaming	+	O	M	M
barringOfPremiumRateCalls	+	O	M	M
barringOfSupplementaryServiceManagement	+	O	M	M
barringOfRegistrationOfCallForwarding	+	O	M	M
barringOfInvocationOfCallTransfer	+	O	M	M
operatorDeterminedBarringPLMNspecificData	+	O	M	M
vGCSGroupMembershipList	+	O	M	M
vBSGroupMembershipList	+	O	M	M
broadcastCallInitiationAllowedList	+	O	M	M
originatingCAMELSubscriptionInformationOCSEI	+	O	M	M
terminatingCAMELSubscriptionInformationTCSEI	+	O	M	M
vMSCTerminatingCAMELSubscriptionInformationVTCSSEI	+	O	M	M
locationInformationSubscriberStateInformation	+	O	M	M
uSSDCAMELSubscriptionInformationUCSEI	+	O	M	M
sSInvocationNotificationSSCSSEI	+	O	M	M
translationInformationFlagTIFCSSEI	+	O	M	M
dialledServiceCAMELSubscriptionInformationDCSEI	+	O	M	M
uSSDGeneralCAMELServiceInformationUGCSSEI	+	O	M	M
oCSINegotiatedCAMELCapabilityHandling	+	O	M	-
sCSINegotiatedCAMELCapabilityHandling	+	O	M	-
vTCSINegotiatedCAMELCapabilityHandling	+	O	M	-
shortMessageServiceCAMELSubscriptionInformationMOSMSCSEI	+	O	M	M
shortMessageServiceCAMELSubscriptionInformationMTSMSCSEI	+	O	M	M
mOSMSCSIVLRNegotiatedCAMELCapabilityHandling	+	O	M	-
mTSMSCSIVLRNegotiatedCAMELCapabilityHandling	+	O	M	M
mCSINegotiatedCAMELCapabilityHandling	+	O	M	-
vLRSupportedCAMELPhases	+	O	M	-
gsmSCFaddressforCSI	+	O	M	M
vLROfferedCAMEL4CSSEI	+	O	M	-
iSTAlertTimer	+	O	M	M
cAllocationRetentionpriority	+	O	M	M
TraceReference2	+	O	M	-
TraceDepth	+	O	M	-
ListofNeTypestoTrace	+	O	M	-
TriggeringEvents	+	O	M	-
ListofInterfacestoTrace	+	O	M	-

### 6.3.12.3 Attribute constraints

The optional attributes:

accessRestrictionData  
 ageIndicator  
 barringOfIncomingCalls  
 barringOfInvocationOfCallTransfer  
 barringOfOutgoingCalls  
 barringOfPremiumRateCalls  
 barringOfRegistrationOfCallForwarding  
 barringOfRoaming  
 barringOfSupplementaryServiceManagement  
 basicMSISDNIndicator  
 bAllocation  
 bAllocation  
 broadcastCallInitiationAllowedList  
 cAllocationRetentionpriority  
 dialledServiceCAMELSubscriptionInformationDCSI  
 gMLCNumbers  
 gsmSCFAddressforCSI  
 iSTAlertTimer  
 locationInformationSubscriberStateInformation  
 lSAActiveModeIndicator  
 lSAActiveModeSupportIndicator  
 lSAIdentity  
 lSAOnlyAccessIndicator  
 lSAPreferentialAccess Indicator  
 lSAPriority  
 mCSINegotiatedCAMELCapabilityHandling  
 mOLRList  
 mOSMSCSIVLRNegotiatedCAMELCapabilityHandling  
 mSISDNAlertIndicator  
 mTSMSCSIVLRNegotiatedCAMELCapabilityHandling  
 oCSINegotiatedCAMELCapabilityHandling  
 oDInducedBarringData  
 operatorDeterminedBarringPLMNspecificData  
 originatingCAMELSubscriptionInformationOCSI  
 privacyExceptionList  
 rSZIlists  
 serviceTypes  
 shortMessageServiceCAMELSubscriptionInformationMOSMSCSI  
 shortMessageServiceCAMELSubscriptionInformationMTSMSCSI  
 sSCSINegotiatedCAMELCapabilityHandling  
 sSInvocationNotificationSSCSI  
 subscriptionRestriction  
 terminatingCAMELSubscriptionInformationTCSI  
 translationInformationFlagTIFCSI  
 uSSDCAMELSubscriptionInformationUCSI  
 uSSDGeneralCAMELServiceInformationUGCSI  
 vBSGroupMembershipList  
 vGCSGroupMembershipList  
 vLROfferedCAMEL4CSIs  
 vLRSupportedCAMELPhases  
 vMCTerminatingCAMELSubscriptionInformationVTCSI  
 vPLMNIdentifier  
 vTCSINegotiatedCAMELCapabilityHandling

shall be supported for the following criteria: The NE supports the parameter (see TS 23.008 [7]).

## 6.3.13 PSServiceProfile

### 6.3.13.1 Definition

In this management context:

- a) This class represents for a subscribed PS service (see 3GPP TS 23.008 [7]) the service preferences and settings chosen for a user.

## 6.3.13.2 Attributes

Attribute name	Visibility	Support Qualifier	Read Qualifier	Write Qualifier
pSServiceProfileId	+	M	M	O
networkAccessMode	+	M	M	M
basicMSISDNIndicator	+	O	M	M
mSISDNAlertIndicator	+	O	M	M
vLRNumber	+	M	M	-
mSCNumber	+	M	M	-
subscriptionRestriction	+	O	M	M
rSZIlists	+	O	M	M
mSCAreaRestrictedFlag	+	M	M	-
oDBinducedBarringData	+	O	M	-
roamingRestrictionDueToUnsupportedFeature	+	M	M	-
lSAIdentity	+	O	M	M
lSAPriority	+	O	M	M
lSAPreferentialAccessIndicator	+	O	M	M
lSAActiveModeSupportIndicator	+	O	M	M
lSAOnlyAccessIndicator	+	O	M	M
lSAActiveModeIndicator	+	O	M	M
vPLMNIdentifier	+	O	M	M
accessRestrictionData	+	O	M	M
privacyExceptionList	+	O	M	M
gMLCNumbers	+	O	M	M
mOLRList	+	O	M	M
serviceTypes	+	O	M	M
ageIndicator	+	O	M	-
sGSNNumber	+	M	M	-
gGSNNumber	+	O	M	M
sGSNarearestrictedflag	+	M	M	-
roamingRestrictedintheSGSNduetounsupportedfeature	+	M	M	-
mNRG	+	M	M	-
traceActivatedinSGSN	+	O	M	-
provisionofTeleservice	+	O	M	M
transferofSMoption	+	M	M	M
mSpurgedforGPRSflag	+	M	M	-
barringofPacketOrientedServices	+	O	M	M
pDPType	+	O	M	M
pDPAddress	+	O	M	M
accessPointName	+	O	M	M
vPLMNAddressAllowed	+	O	M	M
gGSNlist	+	M	M	-
qualityofServiceSubscribed	+	O	M	M
pDPContextIdentifier	+	O	M	-
pDPContextChargingCharacteristics	+	O	M	M
gPRSCAMELSubscriptionInformationGPRSCSI	+	O	M	M
mOShortMessageServiceCAMELSubscriptionInformationMOSMSCSI	+	O	M	M
mTShortMessageServiceCAMELSubscriptionInformationMTSMSCSI	+	O	M	M
mOSMSCSISGSNNegotiatedCAMELCapabilityHandling	+	O	M	M
mTSMCSISGSNNegotiatedCAMELCapabilityHandling	+	O	M	M
mobilityManagementforGPRSeventnotificationMGCSI	+	O	M	M
mGCSINegotiatedCAMELCapabilityHandling	+	O	M	M
gPRSCSINegotiatedCAMELCapabilityHandling	+	O	M	-
sGSNSupportedCAMELPhases	+	O	M	-
sGSNOfferedCAMEL4CSIs	+	O	M	-
gsmSCFAddressforCSI	+	O	M	M
subscribedChargingCharacteristics	+	O	M	M
w-APN	+	O	M	M
listofauthorizedvisitednetworkidentifiers	+	O	M	M
3GPPAAAServerName	+	O	M	-
wLANUERemoteIPAddress	+	O	M	M
wLANAccess	+	O	M	M
wLANTunnelling	+	O	M	M
wLANDirectIPAccess	+	O	M	M

Attribute name	Visibility	Support Qualifier	Read Qualifier	Write Qualifier
wAPNAuthorised	+	O	M	M
w-APNBarringType	+	O	M	M
w-APNChargingData	+	O	M	M
wLANUERemoteIPAddress	+	O	M	M
accessIndependenceFlag	+	O	M	M
i-WLANAccessType	+	O	M	M
chargingData	+	O	M	M
chargingCharacteristics	+	O	M	M
primaryOCSCargingFunctionName	+	O	M	M
secondaryOCSCargingFunctionName	+	O	M	M
primaryChargingCollectionFunctionName	+	O	M	M
secondaryChargingCollectionFunctionName	+	O	M	M
TraceReference2	+	O	M	-
TraceDepth	+	O	M	-
ListofNeTypestoTrace	+	O	M	-
TriggeringEvents	+	O	M	-
ListofInterfacestoTrace	+	O	M	-

### 6.3.13.3 Attribute constraints

The optional attributes:

3GPPAAAServerName  
 accessIndependenceFlag  
 accessPointName  
 accessRestrictionData  
 ageIndicator  
 barringofPacketOrientedServices  
 basicMSISDNIndicator  
 chargingCharacteristics  
 chargingData  
 gGSNNumber  
 gMLCNumbers  
 gPRSCAMELSubscriptionInformationGPRSCSI  
 gPRSCSINegotiatedCAMELCapabilityHandling  
 gsmSCFaddressforCSI  
 i-WLANAccessType  
 listofauthorizedvisitednetworkidentifiers  
 lSAActiveModeIndicator  
 lSAActiveModeSupportIndicator  
 lSAIdentity  
 lSAOnlyAccessIndicator  
 lSAPreferentialAccessIndicator  
 lSAPriority  
 mGCSINegotiatedCAMELCapabilityHandling  
 mobilityManagementforGPRSeventnotificationMGCSI  
 mOLRList  
 mOShortMessageServiceCAMELSubscriptionInformationMOSMSCSI  
 mOSMSCSISGSNNegotiatedCAMELCapabilityHandling  
 mSISDNAlertIndicator  
 mTShortMessageServiceCAMELSubscriptionInformationMTSMSCSI  
 mTSMSCSISGSNNegotiatedCAMELCapabilityHandling  
 oDInducedBarringData  
 pDPAddress  
 pDPContextChargingCharacteristics  
 pDPContextIdentifier  
 pDPType  
 primaryChargingCollectionFunctionName  
 primaryOCSCargingFunctionName  
 privacyExceptionList

provisionofTeleservice  
qualityofServiceSubscribed  
rSZIlists  
secondaryChargingCollectionFunctionName  
secondaryOCSTChargingFunctionName  
serviceTypes  
sGSNOfferedCAMEL4CSIs  
sGSNSupportedCAMELPhases  
subscribedChargingCharacteristics  
subscriptionRestriction  
vPLMNAddressAllowed  
vPLMNIdentifier  
w-APN  
wAPNAuthorised  
w-APNBarringType  
w-APNChargingData  
wLANAccess  
wLANDirectIPAccess  
wLANTunnelling  
wLANUERemoteIPaddress  
wLANUERemoteIPaddress

shall be supported for the following criteria: The NE supports the parameter (see TS 23.008 [7]).

## 6.3.14 IMSServiceProfile

### 6.3.14.1 Definition

In this management context:

- a) This class represents for a subscribed ims (see 3GPP TS 23.008 [7]) service the service preferences and settings chosen for a user.

### 6.3.14.2 Attributes

**Attributes of IMSServiceProfile**

Attribute name	Visibility	Support Qualifier	Read Qualifier	Write Qualifier
imSServiceProfileId	+	M	M	O
barringIndication	+	M	M	M
listofauthorizedvisitednetworkidentifiers	+	M	M	M
registrationStatus	+	M	M	M
sCSCFName	+	M	M	M
diameterClientAddressofSCSCF	+	M	M	-
serverCapabilities	+	O	M	M
subscribedMediaProfileIdentifier	+	O	M	M
initialFilterCriteria	+	O	M	M
applicationServerInformation	+	O	M	M
serviceIndication	+	M	M	M
primaryEventChargingFunctionName	+	O	M	M
secondaryEventChargingFunctionName	+	O	M	M
primaryChargingCollectionFunctionName	+	M	M	M
secondaryChargingCollectionFunctionName	+	O	M	M
gsmSCFAddressforIMCSI	+	O	M	M
imSSFAddressforIMCSI	+	O	M	-
oIMCSI	+	O	M	M
vTIMCSI	+	O	M	M
dIMCS	+	O	M	M
gAAServiceType	+	O	M	M
gAAServiceIdentifier	+	O	M	M
gBAUserSecuritySettings	+	O	M	M
userSecuritySetting	+	O	M	M
userPublicIdentity	+	O	M	M
gAAAuthorizationflag	+	O	M	M
keyLifetime	+	O	M	M
uICCSecuritySetting	+	O	M	M
nAFGroupIdentity	+	O	M	M

### 6.3.14.3 Attribute constraints

The optional attributes shall be supported for the following criteria: The NE supports the parameter (see TS 23.008 [7]).

## 6.3.15 ServiceProviderFunction

### 6.3.15.1 Definition

In this management context:

- a) This class represents service provider functionality.
- b) All managed elements related with providing services have this functionality.
- c) It carries references to all services to be provided.
- d) It inherits from ManagedFunction (defined in 32.622 [6]).

### 6.3.15.2 Attributes

**Attributes of ServiceProviderFunction**

Attribute name	Visibility	Support Qualifier	Read Qualifier	Write Qualifier
serviceProviderFunctionId	+	M	M	-
userLabel	+	M	M	M

## 6.3.16 SubscriptionFunction

### 6.3.16.1 Definition

In this management context:

- a) This class represents subscription functionality.
- b) All managed elements related with the subscription of services have this functionality.
- c) It carries references to all subscription profile data.
- d) It carries references to all Subscriber data
- e) It inherits from ManagedFunction (defined in 32.622 [6]).

### 6.3.16.2 Attributes

**Attributes of SubscriptionFunction**

Attribute name	Visibility	Support Qualifier	Read Qualifier	Write Qualifier
subscriptionFunctionId	+	M	M	-
userLabel	+	M	M	M



## 6.3.17 SuMCSSupplService

### 6.3.17.1 Definition

In this management context:

- a) This class represents a Supplementary Service for a CS service (see 3GPP TS 23.008 [7]) provided by a service provider
- b) This class contains the valid parameters that define the CS supplementary service from subscription point of view.

### 6.3.17.2 Attributes

**Attributes of SuMCSSupplService**

Attribute name	Visibility	Support Qualifier	Read Qualifier	Write Qualifier
sS-Code	+	M	M	M
provisioningState	+	M	M	M
activationState	+	M	M	M
registrationState	+	O	M	M
overrideCategory	+	O	M	M
cLIRestrictionOption	+	O	M	M
forwarded-toNumber	+	O	M	M
forwarded-toSubaddress	+	O	M	M
noReplyConditionTimer	+	O	M	M
maximumEntitledPriority	+	O	M	M
defaultPriority	+	O	M	M
nbrUser	+	O	M	M
nbrSB	+	O	M	M

### 6.3.17.3 Attribute constraints

The optional attributes shall be supported for the following criteria: The NE supports the parameter (see TS 23.008 [7]).

## 6.3.18 SuMPSSupplService

### 6.3.18.1 Definition

In this management context:

- a) This class represents a Supplementary Service for a PS service (see 3GPP TS 23.008 [7]) provided by a service provider
- b) This class contains the valid parameters that define the PS supplementary service from subscription point of view.

### 6.3.18.2 Attributes

**Attributes of SuMPSSupplService**

Attribute name	Visibility	Support Qualifier	Read Qualifier	Write Qualifier
sS-Code	+	M	M	M
provisioningState	+	M	M	M
activationState	+	M	M	M

### 6.3.18.3 Attribute constraints

The optional attributes shall be supported for the following criteria: The NE supports the parameter (See TS 23.008 [7]).

## 6.4 Information relationship definitions

### 6.4.1 Agreement

#### 6.4.1.1 Definition

This represents the agreement relationship between `SuMService` and `SuMSubscribedService`.

#### 6.4.1.2 Roles

Name	Definition
contract	The <code>SuMSubscribedService</code> represents an agreed contract for a <code>SuMService</code> .
offer	The <code>SuMService</code> represents an offer of an agreement to a <code>SuMSubscribedService</code> .

#### 6.4.1.3 Constraints

-

### 6.4.2 Description

#### 6.4.2.1 Definition

This represents the content relationship between `SuMSubscriptionProfile` and `SuMServiceProfile`.

#### 6.4.2.2 Roles

Name	Definition
specification	<code>SuMSubscribedService</code> acts as the specification for the description of <code>SuMServiceProfile</code> .
service	<code>SuMServiceProfile</code> acts as the service specified in the description.

#### 6.4.2.3 Constraints

-

## 6.5 Information attribute definitions

### 6.5.1 Definitions and legal values

The following table defines the attributes that are present in several IOCs of the present document.

**Attributes**

Attribute Name	Definition	Legal Values
iMSServiceId	An attribute whose 'name+value' can be used as an RDN when naming an instance of the IMSService object class. This RDN uniquely identifies the object instance within the scope of its containing (parent) object instance.	
cSServiceId	An attribute whose 'name+value' can be used as an RDN when naming an instance of the CSService object class. This RDN uniquely identifies the object instance within the scope of its containing (parent) object instance.	
pSServiceId	An attribute whose 'name+value' can be used as an RDN when naming an instance of the PSService object class. This RDN uniquely identifies the object instance within the scope of its containing (parent) object instance.	
cSServiceProfileId	An attribute whose 'name+value' can be used as an RDN when naming an instance of the CSServiceProfile object class. This RDN uniquely identifies the object instance within the scope of its containing (parent) object instance.	
pSServiceProfileId	An attribute whose 'name+value' can be used as an RDN when naming an instance of the PSServiceProfile object class. This RDN uniquely identifies the object instance within the scope of its containing (parent) object instance.	
iMSServiceProfileId	An attribute whose 'name+value' can be used as an RDN when naming an instance of the IMSServiceProfile object class. This RDN uniquely identifies the object instance within the scope of its containing (parent) object instance.	
cSSubscribedServiceId	An attribute whose 'name+value' can be used as an RDN when naming an instance of the CSSubscribedService object class. This RDN uniquely identifies the object instance within the scope of its containing (parent) object instance.	
pSSubscribedServiceId	An attribute whose 'name+value' can be used as an RDN when naming an instance of the PSSubscribedService object class. This RDN uniquely identifies the object instance within the scope of its containing (parent) object instance.	
iMSSubscribedServiceId	An attribute whose 'name+value' can be used as an RDN when naming an instance of the IMSSubscribedService object class. This RDN uniquely identifies the object instance within the scope of its containing (parent) object instance.	
suMSubscriberProfileId	An attribute whose 'name+value' can be used as an RDN when naming an instance of the SuMSubscriberProfile object class. This RDN uniquely identifies the object instance within the scope of its containing (parent) object instance.	
suMSubscriberProfileInfo	A description of (information for) the Subscriber Profile. It is an "Any" type with free structure and format.	
suMSubscriptionProfileId	An attribute whose 'name+value' can be used as an RDN when naming an instance of the SuMSubscriptionProfile object class. This RDN uniquely identifies the object instance within the scope of its containing (parent) object instance.	
userLabel	A user-friendly (and user assigned) name of the associated object. Inherited from ManagedFunction.	
agreement-contract	Models the agreement relationship to a subscribed service. This attribute contains a list of the DN(s) of the related SuMSubscribedService instance(s).	
agreement-offer	Models the agreement relationship to a service. An attribute whose 'name+value' can be used as DN when referencing an instance of the SuMService object class.	
description-service	Models the description relationship to a service profile. This attribute contains a list of the DN(s) of the related SuMServiceProfile instance(s).	
description-specification	Models the description relationship to a subscribed service. An attribute whose 'name+value' can be used as DN when referencing an instance of the SuMSubscribedService object class.	

Attribute Name	Definition	Legal Values
iMSI	23.008 clause 2.1.1.1	
networkAccessMode	23.008 clause 2.1.1.2	
mSISDN	23.008 clause 2.1.2	
multinumberingMSISDNs	23.008 clause 2.1.3	
basicMSISDNIndicator	23.008 clause 2.1.3.1	
mSISDNAlertIndicator	23.008 clause 2.1.3.2	
lMSI	23.008 clause 2.1.8	
mobileStationCategory	23.008 clause 2.2.1	
lMUIdentifier	23.008 clause 2.2.2	
iMEISV	23.008 clause 2.2.3	
subscriptionRestriction	23.008 clause 2.4.10	
rSZIlists	23.008 clause 2.4.11.1	
mSCAreaRestrictedFlag	23.008 clause 2.4.12	
sGSNarearestrictedflag	23.008 clause 2.4.14	
oDBinducedBarringData	23.008 clause 2.4.15.1	
roamingRestrictionDueToUnsupportedFeature	23.008 clause 2.4.15.2	
roamingRestrictedintheSGSNduetounsupportedfeature	23.008 clause 2.4.15.3	
lSAIdentity	23.008 clause 2.4.17.1	
lSAPriority	23.008 clause 2.4.17.2	
lSAPreferentialAccessIndicator	23.008 clause 2.4.17.2A	
lSAActiveModeSupportIndicator	23.008 clause 2.4.17.2B	
lSAOnlyAccessIndicator	23.008 clause 2.4.17.3	
lSAActiveModeIndicator	23.008 clause 2.4.17.4	
vPLMNIdentifier	23.008 clause 2.4.17.5	
accessRestrictionData	23.008 clause 2.4.18	
vLRNumber	23.008 clause 2.4.5	
mSCNumber	23.008 clause 2.4.6	
sGSNNumber	23.008 clause 2.4.8.1	
gGSNNumber	23.008 clause 2.4.8.2	
provisionOfBearerService	23.008 clause 2.5.1	
provisionOfTeleservice	23.008 clause 2.5.2	
bAllocation	23.008 clause 2.5.3	
transferofSMOption	23.008 clause 2.5.4	
mNRG	23.008 clause 2.7.2	
checkSSIndicator	23.008 clause 2.7.4.4	
mSPurgedForNonGPRSFlag	23.008 clause 2.7.5	
mSpurgedforGPRSflag	23.008 clause 2.7.6	
subscriberStatus	23.008 clause 2.8.1	
barringOfOutgoingCalls	23.008 clause 2.8.2.1	
barringOfIncomingCalls	23.008 clause 2.8.2.2	
barringOfRoaming	23.008 clause 2.8.2.3	
barringOfPremiumRateCalls	23.008 clause 2.8.2.4	
barringOfSupplementaryServiceManagement	23.008 clause 2.8.2.5	
barringOfRegistrationOfCallForwarding	23.008 clause 2.8.2.6	
barringOfInvocationOfCallTransfer	23.008 clause 2.8.2.7	
barringofPacketOrientedServices	23.008 clause 2.8.2.8	
operatorDeterminedBarringPLMNspecificData	23.008 clause 2.8.3	
notificationToCSEFlagForODB	23.008 clause 2.8.4	
gsmSCFaddresslistForODB	23.008 clause 2.8.5	
messagesWaitingData	23.008 clause 2.10.1	
mobileStationNotReachableFlag	23.008 clause 2.10.2	
memoryCapacityExceededFlag	23.008 clause 2.10.3	
traceReference	23.008 clause 2.11.1	
traceType	23.008 clause 2.11.2	
operationsSystemsIdentity	23.008 clause 2.11.3	
hLRTraceType	23.008 clause 2.11.4	
mAPErrorOnTrace	23.008 clause 2.11.5	
traceActivatedInVLR	23.008 clause 2.11.6	
traceActivatedinSGSN	23.008 clause 2.11.7	
vGCsGroupMembershipList	23.008 clause 2.12.1	
vBSGroupMembershipList	23.008 clause 2.12.2	
broadcastCallInitiationAllowedList	23.008 clause 2.12.2.1	
pDPTType	23.008 clause 2.13.1	

gGSNlist	23.008 clause 2.13.11	
qualityofServiceSubscribed	23.008 clause 2.13.12	
pDPAddress	23.008 clause 2.13.2	
pDPContextIdentifier	23.008 clause 2.13.24	
pDPContextChargingCharacteristics	23.008 clause 2.13.25	
accessPointName	23.008 clause 2.13.6	
vPLMNAddressAllowed	23.008 clause 2.13.8	
originatingCAMELSubscriptionInformationOCSI	23.008 clause 2.14.1.1/3.1	
gPRSCAMELSubscriptionInformationGPRSCSI	23.008 clause 2.14.1.10/2.14.4.4	
dialledServiceCAMELSubscriptionInformationDCSI	23.008 clause 2.14.1.11/3.7	
mobilityManagementforGPRSeventnotificationMGCSI	23.008 clause 2.14.1.12/2.14.4.4	
terminatingCAMELSubscriptionInformationTCSI	23.008 clause 2.14.1.2	
vMSTerminatingCAMELSubscriptionInformationVTCSI	23.008 clause 2.14.1.2/3.2	
locationInformationSubscriberStateInformation	23.008 clause 2.14.1.3	
uSSDCAMELSubscriptionInformationUCSI	23.008 clause 2.14.1.4	
sSInvocationNotificationSSCSI	23.008 clause 2.14.1.5/3.2	
translationInformationFlagTIFCSI	23.008 clause 2.14.1.6/3.6	
shortMessageServiceCAMELSubscriptionInformationMOSMSCSI	23.008 clause 2.14.1.8/2.14.3.5	
mOShortMessageServiceCAMELSubscriptionInformationMOSMSCSI	23.008 clause 2.14.1.8/2.14.4.1	
shortMessageServiceCAMELSubscriptionInformationMTSMSCSI	23.008 clause 2.14.1.9/2.14.3.6	
mTShortMessageServiceCAMELSubscriptionInformationMTSMSCSI	23.008 clause 2.14.1.9/2.14.4.2	
gPRSCSINegotiatedCAMELCapabilityHandling	23.008 clause 2.14.2.1	
mCSINegotiatedCAMELCapabilityHandling	23.008 clause 2.14.2.1	
mGC SINegotiatedCAMELCapabilityHandling	23.008 clause 2.14.2.1	
mOSMSCSISGSNNegotiatedCAMELCapabilityHandling	23.008 clause 2.14.2.1	
mOSMSCSIVLRNegotiatedCAMELCapabilityHandling	23.008 clause 2.14.2.1	
mTSMSCSISGSNNegotiatedCAMELCapabilityHandling	23.008 clause 2.14.2.1	
mTSMSCSIVLRNegotiatedCAMELCapabilityHandling	23.008 clause 2.14.2.1	
oCSINegotiatedCAMELCapabilityHandling	23.008 clause 2.14.2.1	
sCSINegotiatedCAMELCapabilityHandling	23.008 clause 2.14.2.1	
vTCSINegotiatedCAMELCapabilityHandling	23.008 clause 2.14.2.1	
SGSNOfferedCAMEL4CSIs	23.008 clause 2.14.2.2A	
vLROfferedCAMEL4CSIs	23.008 clause 2.14.2.2A	
sGSNSupportedCAMELPhases	23.008 clause 2.14.2.3	
vLRSupportedCAMELPhases	23.008 clause 2.14.2.3	
gsmSCFaddressforCSI	23.008 clause 2.14.2.4	
uSSDGeneralCAMELServiceInformationUGCSI	23.008 clause 2.14.2.4	
iSTAlertTimer	23.008 clause 2.15.1	
privacyExceptionList	23.008 clause 2.16.1.1	
gMLCNumbers	23.008 clause 2.16.1.2	
mOLRList	23.008 clause 2.16.1.3	
serviceTypes	23.008 clause 2.16.1.4	
ageIndicator	23.008 clause 2.17.1	
cSAllocationRetentionpriority	23.008 clause 2.18.1	
subscribedChargingCharacteristics	23.008 clause 2.19.1	
privateUserIdentity	23.008 clause 3.1.1	
publicIdentity	23.008 clause 3.1.2	
barringIndication	23.008 clause 3.1.3	
listofauthorizedvisitednetworkidentifiers	23.008 clause 3.1.4	
registrationStatus	23.008 clause 3.2.1	
sCSCFName	23.008 clause 3.2.2	
diameterClientAddressofSCSCF	23.008 clause 3.2.3	
serverCapabilities	23.008 clause 3.4.1	
subscribedMediaProfileIdentifier	23.008 clause 3.5.1	
initialFilterCriteria	23.008 clause 3.5.2	
applicationServerInformation	23.008 clause 3.5.3	
serviceIndication	23.008 clause 3.5.4	
primaryEventChargingFunctionName	23.008 clause 3.7.1	
secondaryEventChargingFunctionName	23.008 clause 3.7.2	
primaryChargingCollectionFunctionName	23.008 clause 3.7.3	
secondaryChargingCollectionFunctionName	23.008 clause 3.7.4	
gsmSCFaddressforIMCSI	23.008 clause 3.8.4	
iMSSFaddressforIMCSI	23.008 clause 3.8.5	
oIMCSI	23.008 clause 3.8.1	
vTIMCSI	23.008 clause 3.8.2	

dIMCS	23.008 clause 3.8.3	
gAAServiceType	23.008 clause 3A.1	
gAAServiceIdentifier	23.008 clause 3A.2	
gBAUserSecuritySettings	23.008 clause 3A.3	
userSecuritySetting	23.008 clause 3A.4	
userPublicIdentity	23.008 clause 3A.5	
gAAAuthorizationflag	23.008 clause 3A.6	
keyLifetime	23.008 clause 3A.8	
uICCSecuritySetting	23.008 clause 3A.9	
nAFGroupIdentity	23.008 clause 3A.11	
w-APN	23.008 clause 3B.1.3	
listofauthorizedvisitednetworkidentifiers	23.008 clause 3B.1.4	
3GPPAAAServerName	23.008 clause 3B.1.6	
wLANUERemoteIPAddress	23.008 clause 3B.1.10	
wLANAccess	23.008 clause 3B.5.1	
wLANTunnelling	23.008 clause 3B.5.2	
wLANDirectIPAccess	23.008 clause 3B.5.3	
wAPNAuthorised	23.008 clause 3B.5.4	
w-APNBarringType	23.008 clause 3B.5.4.2	
w-APNChargingData	23.008 clause 3B.5.4.3	
wLANUERemoteIPAddress	23.008 clause 3B.5.4.4	
accessIndependenceFlag	23.008 clause 3B.5.5	
i-WLANAccessType	23.008 clause 3B.5.6	
chargingData	23.008 clause 3B.7.1	
chargingCharacteristics	23.008 clause 3B.7.1.1	
primaryOCSChargingFunctionName	23.008 clause 3B.7.2	
secondaryOCSChargingFunctionName	23.008 clause 3B.7.3	
primaryChargingCollectionFunctionName	23.008 clause 3B.7.4	
secondaryChargingCollectionFunctionName	23.008 clause 3B.7.5	
sS-Code	23.008 clause 2.6 29.002 clause 7.6.4.1	
provisioningState	23.008 clause 2.6 29.002 clause 7.6.4.2	
activationState	23.008 clause 2.6 29.002 clause 7.6.4.2	
registrationState	23.008 clause 2.6 29.002 clause 7.6.4.2	
overrideCategory	23.008 clause 2.6 29.002 clause 7.6.4.4	
cLIRestrictionOption	23.008 clause 2.6 29.002 clause 7.6.4.5	
forwarded-toNumber	23.008 clause 2.6 29.002 clause 7.6.4.6	
forwarded-toSubaddress	23.008 clause 2.6 29.002 clause 7.6.4.6	
noReplyConditionTimer	23.008 clause 2.6 29.002 clause 7.6.4.7	
maximumEntitledPriority	23.008 clause 2.6 29.002 clause 7.6.4.41	
defaultPriority	23.008 clause 2.6 29.002 clause 7.6.4.41	
nbrUser	23.008 clause 2.6 29.002 clause 7.6.4.47	
nbrSB	23.008 clause 2.6 29.002 clause 7.6.4.47	
TraceReference2	23.008 Clause 2.11.9	
TraceDepth	23.008 Clause 2.11.10	
ListofNeTypestoTrace	23.008 Clause 2.11.11	
TriggeringEvents	23.008 Clause 2.11.12	
ListofInterfacestoTrace	23.008 Clause 2.11.13	

## Annex A (informative): Change history

Change history								
Date	TSG #	TSG Doc.	CR	Rev	Subject/Comment	Cat	Old	New
Dec 2003	SA_22	SP-030617	--	--	Submitted to TSG SA#22 for Information	--	1.0.0	
Sep 2004	SA_25	SP-040546	--	--	Submitted to TSG SA#25 for Approval	--	2.0.0	
Dec 2004	SA_26	SP-040830	--	--	Submitted to TSG SA#26 for Approval	--	2.7.0	6.0.0
Mar 2005	SA_27	SP-050024	0001	--	Add Generic Authentication Architecture (GAA) attributes – Align with CN4's 23.008 (Organisation of subscriber data)	F	6.0.0	6.1.0
Mar 2005	SA_27	SP-050024	0002	--	Add Interworking WLAN (I-WLAN) parameters – Align with CN4's 23.008 (Organisation of subscriber data)	F	6.0.0	6.1.0
Mar 2005	SA_27	SP-050024	0003	--	Add Supplementary Service attributes – Align with CN4's 23.008 (Organisation of subscriber data)	F	6.0.0	6.1.0
Jun 2005	SA_28	SP-050269	0004	--	Add Rel-6 trace parameters to SuM - align with CT4's TS 23.008 (Organisation of subscriber data)	F	6.1.0	6.2.0
Mar 2006	SA_31	SP-060092	0005	--	Remove duplicate attributes in the Information Service (IS)	F	6.2.0	6.3.0
Jun 2007	SA_36	SP-070269	0006	--	Add definition of missing attributes	F	6.3.0	6.4.0
Jun 2007	SA_36	SP-070269	0007	--	Add missing inheritance definitions	F	6.3.0	6.4.0



---

## History

<b>Document history</b>		
V6.0.0	December 2004	Publication
V6.1.0	March 2005	Publication
V6.2.0	June 2005	Publication
V6.3.0	March 2006	Publication
V6.4.0	June 2007	Publication