

ETSI TS 132 502 V8.2.0 (2010-01)

Technical Specification

**Universal Mobile Telecommunications System (UMTS);
LTE;
Telecommunication management;
Self-Configuration of Network Elements
Integration Reference Point (IRP);
Information Service (IS)
(3GPP TS 32.502 version 8.2.0 Release 8)**



Reference

RTS/TSGS-0532502v820

Keywords

LTE, UMTS

ETSI

650 Route des Lucioles
F-06921 Sophia Antipolis Cedex - FRANCE

Tel.: +33 4 92 94 42 00 Fax: +33 4 93 65 47 16

Siret N° 348 623 562 00017 - NAF 742 C
Association à but non lucratif enregistrée à la
Sous-Préfecture de Grasse (06) N° 7803/88

Important notice

Individual copies of the present document can be downloaded from:

<http://www.etsi.org>

The present document may be made available in more than one electronic version or in print. In any case of existing or perceived difference in contents between such versions, the reference version is the Portable Document Format (PDF). In case of dispute, the reference shall be the printing on ETSI printers of the PDF version kept on a specific network drive within ETSI Secretariat.

Users of the present document should be aware that the document may be subject to revision or change of status. Information on the current status of this and other ETSI documents is available at

<http://portal.etsi.org/tb/status/status.asp>

If you find errors in the present document, please send your comment to one of the following services:

http://portal.etsi.org/chaicor/ETSI_support.asp

Copyright Notification

No part may be reproduced except as authorized by written permission.
The copyright and the foregoing restriction extend to reproduction in all media.

© European Telecommunications Standards Institute 2010.
All rights reserved.

DECTTM, **PLUGTESTS**TM, **UMTS**TM, **TIPHON**TM, the TIPHON logo and the ETSI logo are Trade Marks of ETSI registered for the benefit of its Members.

3GPPTM is a Trade Mark of ETSI registered for the benefit of its Members and of the 3GPP Organizational Partners.

LTETM is a Trade Mark of ETSI currently being registered

for the benefit of its Members and of the 3GPP Organizational Partners.

GSM[®] and the GSM logo are Trade Marks registered and owned by the GSM Association.

Intellectual Property Rights

IPRs essential or potentially essential to the present document may have been declared to ETSI. The information pertaining to these essential IPRs, if any, is publicly available for **ETSI members and non-members**, and can be found in ETSI SR 000 314: *"Intellectual Property Rights (IPRs); Essential, or potentially Essential, IPRs notified to ETSI in respect of ETSI standards"*, which is available from the ETSI Secretariat. Latest updates are available on the ETSI Web server (<http://webapp.etsi.org/IPR/home.asp>).

Pursuant to the ETSI IPR Policy, no investigation, including IPR searches, has been carried out by ETSI. No guarantee can be given as to the existence of other IPRs not referenced in ETSI SR 000 314 (or the updates on the ETSI Web server) which are, or may be, or may become, essential to the present document.

Foreword

This Technical Specification (TS) has been produced by ETSI 3rd Generation Partnership Project (3GPP).

The present document may refer to technical specifications or reports using their 3GPP identities, UMTS identities or GSM identities. These should be interpreted as being references to the corresponding ETSI deliverables.

The cross reference between GSM, UMTS, 3GPP and ETSI identities can be found under <http://webapp.etsi.org/key/queryform.asp>.

Contents

| | |
|---|----|
| Intellectual Property Rights | 2 |
| Foreword..... | 2 |
| Foreword..... | 7 |
| Introduction | 7 |
| 1 Scope | 8 |
| 2 References | 8 |
| 3 Definitions and abbreviations..... | 8 |
| 3.1 Definitions | 8 |
| 3.2 Abbreviations | 9 |
| 4 Stage 2 descriptions..... | 10 |
| 4.1 General | 10 |
| 4.2 Management and Monitoring of Self-Configuration | 10 |
| 4.2.1 Usage of Itf-N | 10 |
| 4.2.1.1 Usage of alarmIRP | 10 |
| 4.2.1.1.2 Usage of information object classes | 10 |
| 4.2.1.1.2 Usage of notifications..... | 10 |
| 4.2.1.1.3 Usage of notifications..... | 10 |
| 4.2.1.1.3.1 Usage of notifyNewAlarm | 10 |
| 4.2.1.1.3.2 Usage of notifyObjectCreation/-deletion/-attributeValueChange | 10 |
| 4.3 Inventory Update..... | 10 |
| 4.3.1 Usage of Itf-N..... | 10 |
| 4.3.1.1 Usage of Inventory Management IRP NRM (32.69n) | 10 |
| 5 Information Object Classes | 11 |
| 5.1 Imported information entities and local labels | 11 |
| 5.2 Class diagram | 11 |
| 5.2.1 Attributes and relationships | 11 |
| 5.2.2 Inheritance | 12 |
| 5.3 Information object class definitions | 13 |
| 5.3.1 ScManagementCapability | 13 |
| 5.3.1.1 Definition | 13 |
| 5.3.1.2 Attributes..... | 13 |
| 5.3.1.2 Notifications..... | 13 |
| 5.3.2 ScManagementProfile..... | 13 |
| 5.3.2.1 Definition | 13 |
| 5.3.2.2 Attributes..... | 14 |
| 5.3.2.2 Notifications..... | 14 |
| 5.3.3 ScProcess | 14 |
| 5.3.3.1 Definition | 14 |
| 5.3.3.2 Attributes..... | 15 |
| 5.3.3.2 Notifications..... | 15 |
| 5.3.4 SelfConfigurationIRP | 15 |
| 5.3.4.1 Definition | 15 |
| 5.3.4.2 Attributes..... | 15 |
| 5.3.4.3 Notifications..... | 15 |
| 5.4 Information relationship definitions | 16 |
| 5.4.1 relation-SelfConfigurationIRP-scManagementCapability (M)..... | 16 |
| 5.4.1.1 Definition | 16 |
| 5.4.1.2 Roles | 16 |
| 5.4.1.3 Constraints | 16 |
| 5.4.2 relation-SelfConfigurationIRP-scManagementProfile (M)..... | 16 |
| 5.4.2.1 Definition | 16 |
| 5.4.2.2 Roles | 16 |

| | | |
|-----------|--|----|
| 5.4.2.3 | Constraints | 16 |
| 5.4.3 | relation-SelfConfigurationIRP-scProcess (M) | 16 |
| 5.4.3.1 | Definition | 16 |
| 5.4.3.2 | Roles | 16 |
| 5.4.3.3 | Constraints | 17 |
| 5.4.4 | relation-ScManagementCapabilites-scManagementProfile (M) | 17 |
| 5.4.4.1 | Definition | 17 |
| 5.4.4.2 | Roles | 17 |
| 5.4.4.3 | Constraints | 17 |
| 5.4.5 | relation scManagementProfile-scProcess (M) | 17 |
| 5.4.5.1 | Definition | 17 |
| 5.4.5.2 | Roles | 17 |
| 5.4.5.3 | Constraints | 17 |
| 5.5 | Information attribute definitions | 18 |
| 5.5.1 | Definition and legal values | 18 |
| 5.5.2 | Constraints | 18 |
| 5.6 | Common Notifications | 18 |
| 5.7 | System State Model | 18 |
| 6 | IRP descriptions: Interface Definitions | 19 |
| 6.1 | Imported information entities and local labels | 19 |
| 6.2 | Class diagram representing interfaces | 20 |
| 6.3 | Generic rules | 20 |
| 6.4 | SCManagementOperations_1 Interface (M) | 21 |
| 6.4.1 | Operation listScManagementCapabilities (M) | 21 |
| 6.4.1.1 | Definition | 21 |
| 6.4.1.2 | Input parameters | 21 |
| 6.4.1.3 | Output parameters | 21 |
| 6.4.1.4 | Pre-condition | 21 |
| 6.4.1.5 | Post-condition | 21 |
| 6.4.1.6 | Exceptions | 21 |
| 6.4.2 | Operation listScManagementProfiles (M) | 22 |
| 6.4.2.1 | Definition | 22 |
| 6.4.2.2 | Input parameters | 22 |
| 6.4.2.3 | Output parameters | 22 |
| 6.4.2.4 | Pre-condition | 22 |
| 6.4.2.5 | Post-condition | 22 |
| 6.4.2.6 | Exceptions | 22 |
| 6.4.2.6.1 | exceptionName | 22 |
| 6.4.3 | Operation createScManagementProfile (M) | 22 |
| 6.4.3.1 | Definition | 22 |
| 6.4.3.2 | Input parameters | 23 |
| 6.4.3.3 | Output parameters | 23 |
| 6.4.3.4 | Pre-condition | 23 |
| 6.4.3.5 | Post-condition | 23 |
| 6.4.3.6 | Exceptions | 23 |
| 6.4.3.6.1 | exceptionName | 23 |
| 6.4.4 | Operation deleteScManagementProfile (M) | 23 |
| 6.4.4.1 | Definition | 23 |
| 6.4.4.2 | Input parameters | 23 |
| 6.4.4.3 | Output parameters | 23 |
| 6.4.4.4 | Pre-condition | 23 |
| 6.4.4.5 | Post-condition | 24 |
| 6.4.4.6 | Exceptions | 24 |
| 6.4.4.6.1 | exceptionName | 24 |
| 6.4.5 | Operation listScProcesses (M) | 24 |
| 6.4.5.1 | Definition | 24 |
| 6.4.5.2 | Input parameters | 24 |
| 6.4.5.3 | Output parameters | 24 |
| 6.4.5.4 | Pre-condition | 24 |
| 6.4.5.5 | Post-condition | 24 |
| 6.4.5.6 | Exceptions | 24 |

| | | |
|-----------|--|----|
| 6.4.5.6.1 | exceptionName | 24 |
| 6.4. | Operation resumeScProcess (M) | 24 |
| 6.4.6.1 | Definition | 24 |
| 6.4.6.2 | Input parameters | 25 |
| 6.4.6.3 | Output parameters | 25 |
| 6.4.6.4 | Pre-condition | 25 |
| 6.4.6.5 | Post-condition | 25 |
| 6.4.6.6 | Exceptions | 25 |
| 6.4.6.6.1 | exceptionName | 25 |
| 6.4.7 | Operation terminateScProcess (M) | 25 |
| 6.4.7.1 | Definition | 25 |
| 6.4.7.2 | Input parameters | 25 |
| 6.4.7.3 | Output parameters | 25 |
| 6.4.7.4 | Pre-condition | 26 |
| 6.4.7.5 | Post-condition | 26 |
| 6.4.7.6 | Exceptions | 26 |
| 6.4.7.6.1 | exceptionName | 26 |
| 6.5 | SCManagementOperations_2 Interface (O) | 27 |
| 6.5.1 | Operation changeScManagementProfile (O) | 27 |
| 6.5.1.1 | Definition | 27 |
| 6.5.1.2 | Input parameters | 27 |
| 6.5.1.3 | Output parameters | 27 |
| 6.5.1.4 | Pre-condition | 27 |
| 6.5.1.5 | Post-condition | 27 |
| 6.5.1.6 | Exceptions | 27 |
| 6.5.1.6.1 | exceptionName | 27 |
| 6.6 | SCManagementNotification_1 Interface (M) | 27 |
| 6.6.1 | Notification notifyScManagementProfileCreation (M) | 27 |
| 6.6.1.1 | Definition | 27 |
| 6.6.1.2 | Input parameters | 28 |
| 6.6.1.3 | Triggering event | 28 |
| 6.6.1.3.1 | From state | 28 |
| 6.6.1.3.2 | To state | 28 |
| 6.6.2 | Notification notifyScManagementProfileDeletion (M) | 28 |
| 6.6.2.1 | Definition | 28 |
| 6.6.2.2 | Input parameters | 28 |
| 6.6.2.3 | Triggering event | 28 |
| 6.6.2.3.1 | From state | 28 |
| 6.6.2.3.2 | To state | 28 |
| 6.6.3 | Notification notifyScProcessCreation (M) | 28 |
| 6.6.3.1 | Definition | 28 |
| 6.6.3.2 | Input parameters | 29 |
| 6.6.3.3 | Triggering event | 29 |
| 6.6.3.3.1 | From state | 29 |
| 6.6.3.3.2 | To state | 29 |
| 6.6.4 | Notification notifyScProcessStage (M) | 29 |
| 6.6.4.1 | Definition | 29 |
| 6.6.4.2 | Input parameters | 29 |
| 6.6.4.3 | Triggering event | 29 |
| 6.6.4.3.1 | From state | 29 |
| 6.6.4.3.2 | To state | 29 |
| 6.6.5 | Notification notifyScProcessDeletion (M) | 30 |
| 6.6.5.1 | Definition | 30 |
| 6.6.5.2 | Input parameters | 30 |
| 6.6.5.3 | Triggering event | 30 |
| 6.6.5.3.1 | From state | 30 |
| 6.6.5.3.2 | To state | 30 |
| 6.6.6 | Notification notifyNewScManagementCapabilityAvailability (M) | 31 |
| 6.6.6.1 | Definition | 31 |
| 6.6.6.2 | Input parameters | 31 |
| 6.6.6.3 | Triggering event | 31 |

| | | |
|-------------------------------|--|-----------|
| 6.6.6.3.1 | From state | 31 |
| 6.6.6.3.2 | To state | 31 |
| 6.7 | SCManagementNotification_2 Interface (O) | 32 |
| 6.7.1 | Notification notifyScManagementProfileChange (O) | 32 |
| 6.7.1.1 | Definition | 32 |
| 6.7.1.2 | Input parameters | 32 |
| 6.7.1.3 | Triggering event | 32 |
| 6.7.1.3.1 | From state | 32 |
| 6.7.33.2 | To state | 32 |
| Annex A (informative): | Change history | 33 |
| History | | 34 |

Foreword

This Technical Specification has been produced by the 3rd Generation Partnership Project (3GPP).

The contents of the present document are subject to continuing work within the TSG and may change following formal TSG approval. Should the TSG modify the contents of the present document, it will be re-released by the TSG with an identifying change of release date and an increase in version number as follows:

Version x.y.z

where:

- x the first digit:
 - 1 presented to TSG for information;
 - 2 presented to TSG for approval;
 - 3 or greater indicates TSG approved document under change control.
- y the second digit is incremented for all changes of substance, i.e. technical enhancements, corrections, updates, etc.
- z the third digit is incremented when editorial only changes have been incorporated in the document.

Introduction

The present document is part of a TS-family covering the 3rd Generation Partnership Project Technical Specification Group Services and System Aspects, Telecommunication management; as identified below:

- 32.501: Self-Configuration of Network Elements; Concepts and Integration Reference Point (IRP) Requirements
- 32.502: Self-Configuration of Network Elements Integration Reference Point (IRP); Information Service (IS)**
- 32.503: Self-Configuration of Network Elements Integration Reference Point (IRP); Common Object Request Broker Architecture (CORBA) Solution Set (SS)

1 Scope

The present document defines the Information Service (IS) part of the Self-Configuration IRP (SCIRP). It describes the semantics of the information and the interactions visible across Itf-N in a protocol independent way. The information is specified by means of Information Object Classes (IOCs) and the interactions by means of operations and notifications. The present document does not specify the syntax (encoding) of the information.

The scope of this version of the TS is restricted to self-configuration of eNBs.

The present documents also describes how already defined Itf-N functionalities are used in the context of Self-Configuration.

2 References

The following documents contain provisions which, through reference in this text, constitute provisions of the present document.

- References are either specific (identified by date of publication, edition number, version number, etc.) or non-specific.
- For a specific reference, subsequent revisions do not apply.
- For a non-specific reference, the latest version applies. In the case of a reference to a 3GPP document (including a GSM document), a non-specific reference implicitly refers to the latest version of that document *in the same Release as the present document*.

- [1] 3GPP TR 21.905: "Vocabulary for 3GPP Specifications".
- [2] 3GPP TS 32.101: "Telecommunication management; Principles and high level requirements".
- [3] 3GPP TS 32.102: "Telecommunication management; Architecture".
- [4] 3GPP TS 21.905: "Vocabulary for 3GPP Specifications".
- [5] 3GPP TR 32.816: "Telecommunication management; Study on Management of Evolved Universal Terrestrial Radio Access Network (E-UTRAN) and Evolved Packet Core (EPC)".
- [6] 3GPP TS 32.501: "Telecommunication management; Self-Configuration of Network Elements; Concepts and Integration Reference Point (IRP) Requirements".
- [7] 3GPP TS 32.532: "Telecommunication management; Software management Integration Reference Point (IRP); Information Service (IS)".
- [8] 3GPP TS 32.622: "Telecommunication management; Generic network resources Integration Reference Point (IRP); Network Resource Model (NRM)".
- [9] 3GPP TS 32.312: "Telecommunication management; Generic Integration Reference Point (IRP) management: Information Services".

3 Definitions and abbreviations

3.1 Definitions

For the purposes of the present document, the terms and definitions given in TS 32.101 [2], TS 32.102 [3] and TR 21.905 [4] and the following apply. A term defined in the present document takes precedence over the definition of the same term, if any, in TS 32.501 [6], TS 32.101 [1], TS 32.102 [2] and TS 21.905 [4], in that order.

3.2 Abbreviations

For the purposes of the present document, the abbreviations given in TR 21.905 [4], TS 32.501 [6] and the following apply. An abbreviation defined in the present document takes precedence over the definition of the same abbreviation, if any, in TR 21.905 [4] and TS 32.501 [6].

4 Stage 2 descriptions

4.1 General

For the logical/Physical architecture of functional blocs and their interactions see in TR 32.816 [5] and TS 32.501 [6].

4.2 Management and Monitoring of Self-Configuration

4.2.1 Usage of Itf-N

For specifically defined interface see 6.3.1.

4.2.1.1 Usage of alarmIRP

AlarmIRP is re-used for alarm reporting of self-establishment.

Specific definitions:

4.2.1.1.2 Usage of information object classes

No specific definitions.

4.2.1.1.2 Usage of notifications

No specific definitions.

4.2.1.1.3 Usage of notifications

For notification without sub-clause no specific definitions exist.

4.2.1.1.3.1 Usage of notifyNewAlarm

The parameter 'probableCause' shall use one of the values 'softwareDownloadFailure' (already defined), 'softwareInstallationError' or 'softwareFallbackError' (the latter two values need to be introduced)

For parameter alarmType the value 'ProcessingErrorAlarm' should be used.

Parameters trendIndication and thresholdInfo should not be used.

4.2.1.1.3.2 Usage of notifyObjectCreation/-deletion/-attributeValueChange

For notifyObjectCreation/-deletion/-attributeValueChange notifications which are triggered by a self-configuration functionality the value SON_operation shall be used for parameter sourceIndicator. The parameter additionalInformation may indicate that this was triggered by self-configuration.

4.3 Inventory Update

4.3.1 Usage of Itf-N

4.3.1.1 Usage of Inventory Management IRP NRM (32.69n)

The Inventory Management NRM IRP shall be used.

5 Information Object Classes

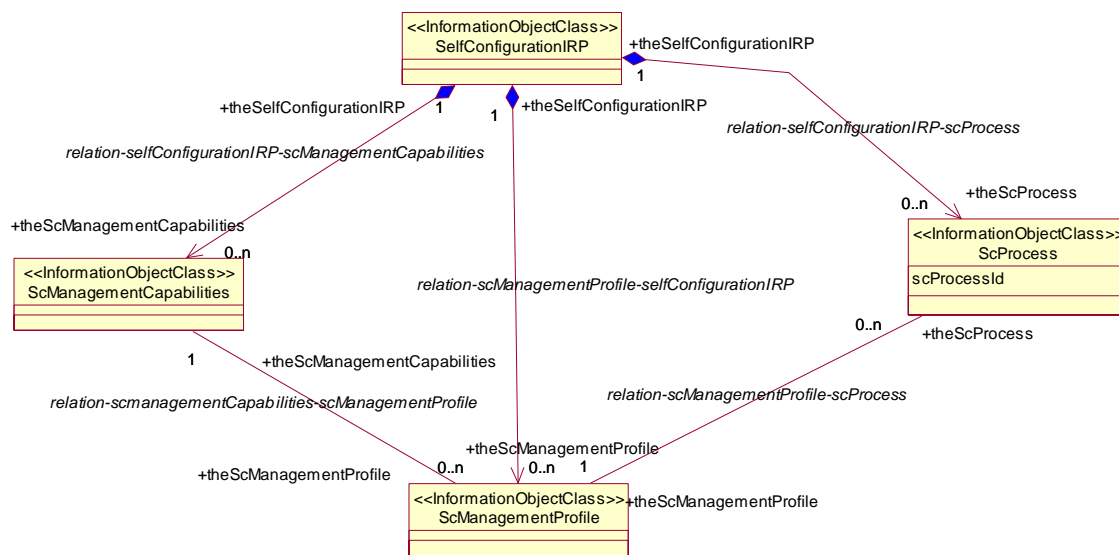
5.1 Imported information entities and local labels

| Label reference | Local label |
|---|-------------------|
| 32.532 [7], information object class, swMCapabilities | swMCapabilities |
| 32.532 [7], information object class, swMProfile | swMProfile |
| 32.532 [7], information object class, swMProcess | swMProcess |
| 3GPP TS 32.622 [6], information object class, Top | top |
| 3GPP TS 32.312 [7], information object class, managedGenericIRP | managedGenericIRP |

5.2 Class diagram

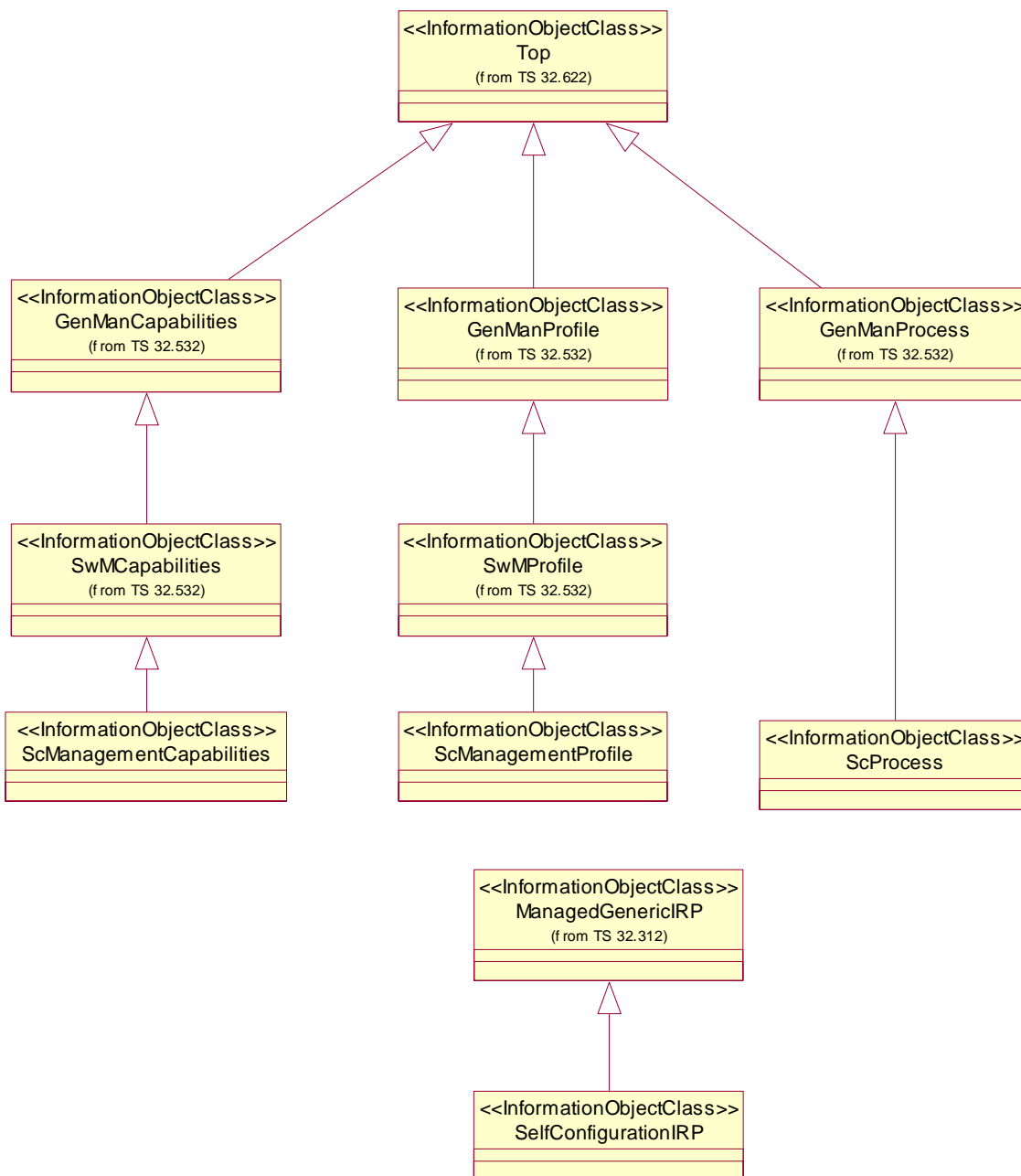
5.2.1 Attributes and relationships

The diagram reflects the definitions in the text of the following clauses. In case of conflict text takes precedence.



5.2.2 Inheritance

The diagram reflects the definitions in the text of the following clauses. In case of conflict text takes precedence.



5.3 Information object class definitions

5.3.1 ScManagementCapability

5.3.1.1 Definition

This object class is a sub-class of `swMCapability` and represents the IRPAgent's capabilities in support of self configuration.

It is created by the IRPAgent and cannot be modified by the IRPManager.

A `ScManagementCapability` object is valid for a certain NE type or a set of NE types. For an NE there shall be no ambiguity which `ScManagementCapability` object is valid for the NE.

Multiple `ScManagementCapability` objects may be instantiated in the IRPAgent.

The object identifies

a) the sequence of the self-configuration steps
and for each step

a.1) the NE behavior in case the step does not perform normally

a.2) the possibility, whether before the step a stop point can be selected, such that the self-configuration step is suspended and waits for a request by the IRPManager to resume.

Information on Requirements Traceability:

| Referenced TS | Requirement label | Comment |
|--------------------|-------------------|---------|
| 3GPP TS 32.501 [6] | REQ_SCMAN_FUN_1 | |
| 3GPP TS 32.501 [6] | REQ_SCSW_FUN_4 | |
| 3GPP TS 32.501 [6] | REQ_SCSW_FUN_5 | |

5.3.1.2 Attributes

All attributes inherited from IOC `swMCapability`.

Additional attributes: None

5.3.1.2 Notifications

| Name | Qualifier | Notes |
|-----------------------------------|-----------|-------|
| notifyNewScManagementAvailability | O | |

5.3.2 ScManagementProfile

5.3.2.1 Definition

This object class is a sub-class of `swMProfile`. It represents the IRPManager decision related to self configuration.

A `ScManagementProfile` object is valid for a certain NE type or a set of NE types.

For an NE starting its self-configuration process (see `ScProcess`) there shall be no ambiguity which `ScManagementProfile` is valid for the NE.

Multiple `ScManagementProfile` objects may be instantiated in the IRPAgent.

By using this object the IRPManager decides which of the possible stop points offered in `scManagementCapability` are used to suspend the self-configuration process of the specified NE type (or set of NE types).

Information on Requirements Traceability:

| Referenced TS | Requirement label | Comment |
|--------------------|-------------------|---------|
| 3GPP TS 32.501 [6] | REQ_SCMAN_FUN_1 | |
| 3GPP TS 32.501 [6] | REQ_SCMAN_FUN_2 | |
| 3GPP TS 32.501 [6] | REQ_SCMON_FUN_3 | |
| 3GPP TS 32.501 [6] | REQ_SCSW_FUN_5 | |
| 3GPP TS 32.501 [6] | REQ_SCSW_FUN_6 | |

5.3.2.2 Attributes

All attributes inherited from IOC `swMProfile`.

Additional attributes: None.

5.3.2.2 Notifications

| Name | Qualifier | Notes |
|--|-----------|--|
| <code>notifyScManagementProfileCreation</code> | M | |
| <code>notifyScManagementProfileChanged</code> | CM | Condition: Present if operation <code>changeScManagementProfile</code> is supported. |
| <code>notifyScManagementProfileDeletion</code> | M | |

5.3.3 ScProcess

5.3.3.1 Definition

This object class is a sub-class of `genManProcess`. It describes the Self Configuration process for an NE. It allows the IRPManager to be informed about the current progress of the Self Configuration process and where stop points are set. No intervention of the IRPManager is foreseen except to provide indication to resume after a stop point was reached or to abort the self-configuration.

When the automated management process for an NE starts, an instance of the `scProcess` is created automatically.

The `id` of the `scProcess` shall be identical to the identifier of the NE and identify the `scProcess` instance uniquely.

The steps in the `stepInfoList` shall conform to the content of the relevant `scManagementProfile` instance.

Examples:

1. If the `stepsAndSelectedStopPointList` of `scManagementProfile` indicates `stopPointCanBeSetBeforeThisStep=No` for step X, then the entry for step X in the `stepInfoList` of `scProcess` can only have the value `stopPointIsNotSet`.
2. All steps within the `stepInfoList` shall have the same `sequenceNumberInScProcess` as in the `scStepList` of `scManagementProfile`.

When there is no relevant `scManagementProfile` at creation time of `scProcess`, then the IRPAgent creates the `scProcess` based on the relevant `scManagementCapability`. In this case preferably no stop point shall be set in the self configuration process.

When the last step of the self configuration process is completed successfully, the `scProcess` instance is deleted automatically.

When self configuration process is terminated by the `IRPManager`, the `scProcess` instance is deleted automatically.

Information on Requirements Traceability:

| Referenced TS | Requirement label | Comment |
|--------------------|-------------------|---------|
| 3GPP TS 32.501 [6] | REQ_SCMAN_FUN_3 | |
| 3GPP TS 32.501 [6] | REQ_SCMAN_FUN_4 | |
| 3GPP TS 32.501 [6] | REQ_SCMON_FUN_2 | |
| 3GPP TS 32.501 [6] | REQ_SCMON_FUN_4 | |
| 3GPP TS 32.501 [6] | REQ_SCMON_FUN_5 | |
| 3GPP TS 32.501 [6] | REQ_SCMON_FUN_6 | |

5.3.3.2 Attributes

All attributes inherited from `IOC GenManProcess`.

No additional attributes.

5.3.3.2 Notifications

| Name | Qualifier | Notes |
|--------------------------------------|-----------|-------|
| <code>notifyScProcessCreation</code> | M | |
| <code>notifyScProcessStage</code> | M | |
| <code>notifyScProcessDeletion</code> | M | |

5.3.4 SelfConfigurationIRP

5.3.4.1 Definition

This information object represents a self-configuration IRP. It inherits from `IOC managedGenericIRP`.

4.3.4.2 Attributes

All attributes inherited from `IOC managedGenericIRP`.

Additional attributes: None.

4.3.4.3 Notifications

All notifications inherited from `IOC managedGenericIRP`.

Additional notifications: None.

5.4 Information relationship definitions

5.4.1 relation-SelfConfigurationIRP-scManagementCapability (M)

5.4.1.1 Definition

This represents the relationship between `SelfConfigurationIRP` and `ScManagementCapability`.

5.4.1.2 Roles

| Name | Definition |
|--|---|
| <code>theSelfConfigurationIRP</code> | It represents the <code>SelfConfigurationIRP</code> . |
| <code>theScManagementCapability</code> | It represents the <code>ScManagementCapability</code> . |

5.4.1.3 Constraints

There is no constraint for this relationship.

5.4.2 relation-SelfConfigurationIRP-scManagementProfile (M)

5.4.2.1 Definition

This represents the relationship between `SelfConfigurationIRP` and `ScManagementProfile`.

5.4.2.2 Roles

| Name | Definition |
|--------------------------------------|---|
| <code>theSelfConfigurationIRP</code> | It represents the <code>SelfConfigurationIRP</code> . |
| <code>theScManagementProfile</code> | It represents the <code>ScManagementProfile</code> . |

5.4.2.3 Constraints

There is no constraint for this relationship.

5.4.3 relation-SelfConfigurationIRP-scProcess (M)

5.4.3.1 Definition

This represents the relationship between `SelfConfigurationIRP` and `ScProcess`.

5.4.3.2 Roles

| Name | Definition |
|--------------------------------------|---|
| <code>theSelfConfigurationIRP</code> | It represents the <code>SelfConfigurationIRP</code> . |
| <code>theScProcess</code> | It represents the <code>ScProcess</code> . |

5.4.3.3 Constraints

There is no constraint for this relationship.

5.4.4 relation-ScManagementCapabilites-scManagementProfile (M)

5.4.4.1 Definition

This represents the relationship between `ScManagementCapability` and `ScManagementProfile`.

5.4.4.2 Roles

| Name | Definition |
|--|---|
| <code>theScManagementCapability</code> | It represents the <code>ScManagementCapability</code> . |
| <code>theScManagementProfile</code> | It represents the <code>ScManagementProfile</code> . |

5.4.4.3 Constraints

A relation can only exist between a `ScManagementProfile` and a `ScManagementCapability` when
 a) all steps which are entries in the `stepsAndSelectedStopPointList` of `ScManagementProfile` have `stopPointCanBeSetBeforeThisStep = Yes` in the `stepsAndOfferedStopPointList` of the `ScManagementCapability`.
 b) `nEInformation` of `ScManagementProfile` is a subset of `nEInformation` of `ScManagementCapability` :

5.4.5 relation scManagementProfile-scProcess (M)

5.4.5.1 Definition

This represents the relationship between `ScManagementProfile` and `ScProcess`.

5.4.5.2 Roles

| Name | Definition |
|-------------------------------------|---|
| <code>theScManagementProfile</code> | It represents the <code>theScManagementProfile</code> . |
| <code>theScProcess</code> | It represents the <code>ScProcess</code> . |

5.4.5.3 Constraints

A `ScProcess` shall perform all self-configuration steps according to `stepsAndOfferedStopPointList` of `ScManagementProfile`.

A relation can only exist between a `ScProcess` and a `ScManagementProfile` when `nEIdentification` of `ScProcess` falls into `nEInformation` of `ScManagementProfile`:

5.5 Information attribute definitions

5.5.1 Definition and legal values

| Attribute Name | Definition | Legal Values |
|--|--|--|
| id | It identifies uniquely an instance of its object class. | |
| nEIdentification | See 32.532 | |
| nEInformation | See 32.532 | |
| swVersionToBeInstalled | See 32.532 | |
| stepsAndOfferedStopPointList | See 32.532 | See 32.532 The following values for nameOfStep can be used additionally to those defined in 32.532: prepareBasicConfigurationAndOAMLink retrieveConfigurationData setUpPreConfiguredSignallingLinks setFinalStateOfNE All steps may be offered as stop points. |
| stepsAndSelectedStopPointList | See 32.532 | |
| scProcessList | This attribute contains information about the instances of scProcess . Each entry in the list contains (SET OF): <ul style="list-style-type: none"> • id (of the process) • nEIdentification • stepInfoList | See individual definitions of the list entry content. |
| stepInfoList | See 32.532 | |
| suspendBehaviour | See 32.532 | |
| offeredFinalAdministrativeStateInformation | See 32.532 | |
| selectedFinalAdministrativeState | See 32.532 | |
| swVersionToBeInstalledOfferList | See 32.532 | |
| versionNumber | See 32.532 | |
| matchingProfileIdentification | See 32.532 | |
| matchingNEInformation | See 32.532 | |

5.5.2 Constraints

| Name | Definition |
|------|------------|
| FFS | |

5.6 Common Notifications

| Name | Qualifier | Notes |
|------|-----------|-------|
| FFS | | |

NOTE: This clause does not need to be present when there are no common notifications.

5.7 System State Model

FFS

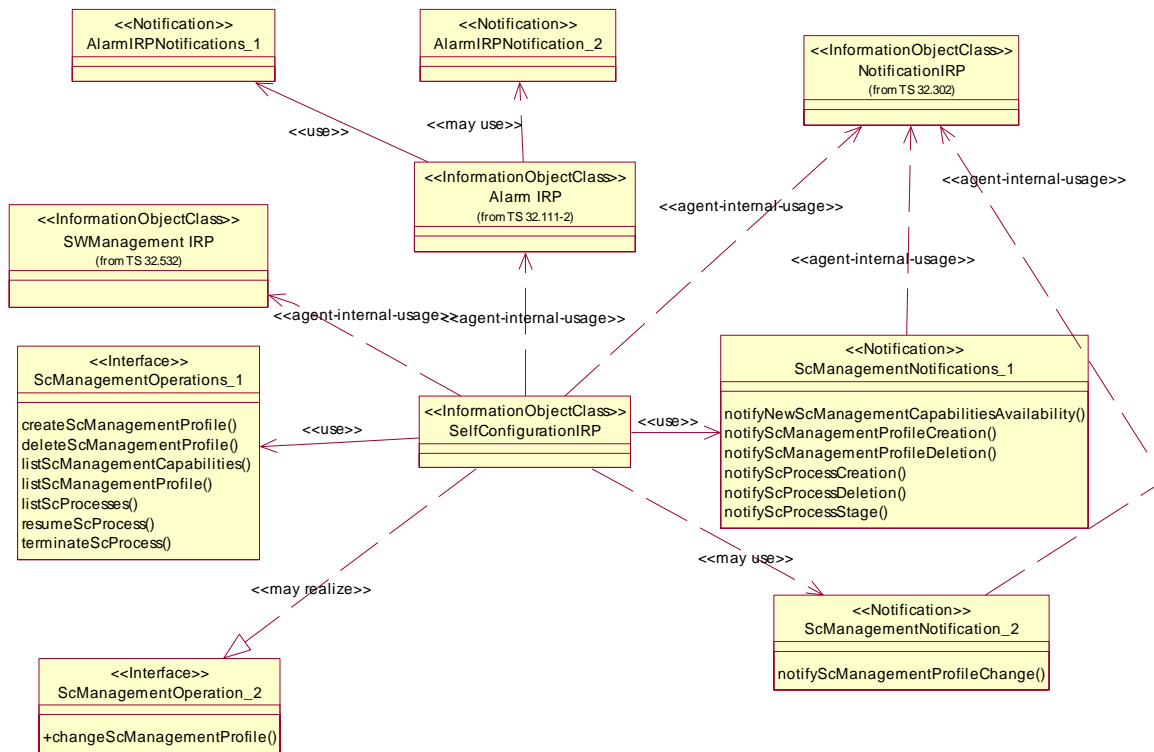
6 IRP descriptions: Interface Definitions

6.1 Imported information entities and local labels

| Label reference | Local label |
|--|-----------------------------------|
| 32.532 [7], operation, listSwmCapabilities | listScManagementCapabilities |
| 32.532 [7], operation, listSwmProfiles | listScManagementProfiles |
| 32.532 [7], operation, createSwmProfile | createScManagementProfile |
| 32.532 [7], operation, deleteSwmProfile | deleteScManagementProfile |
| 32.532 [7], operation, listSwmProcesses | listScManagementProcesses |
| 32.532 [7], operation, resumeSwmProcess | resumeScManagementProcess |
| 32.532 [7], operation, swFallback | swFallback |
| 32.532 [7], operation, changeSwmProfile | changeScManagementProfile |
| 32.532 [7], operation, terminateSwmProcess | terminateScManagementProcess |
| 32.532 [7], notification, notifySwmProfileCreation | notifyScManagementProfileCreation |
| 32.532 [7], notification, notifySwmProfileDeletion | notifyScManagementProfileDeletion |
| 32.532 [7], notification, notifySwmProcessCreation | notifyScManagementProcessCreation |
| 32.532 [7], notification, notifySwmProcessStage | notifyScManagementProcessStage |
| 32.532 [7], notification, notifySwmProcessDeletion | notifyScManagementProcessDeletion |
| 32.532 [7], notification, notifySwmProfileChange | notifyScManagementProfileChange |

6.2 Class diagram representing interfaces

The diagram reflects the definitions in the text of the following clauses. In case of conflict text takes precedence.



6.3 Generic rules

Rule 1: each operation with at least one input parameter supports a pre-condition `valid_input_parameter` which indicates that all input parameters shall be valid with regards to their information type. Additionally, each such operation supports an exception `operation_failed_invalid_input_parameter` which is raised when pre-condition `valid_input_parameter` is false. The exception has the same entry and exit state.

Rule 2: Each operation with at least one optional input parameter supports a set of pre-conditions `supported_optional_input_parameter_yyy` where "yyy" is the name of the optional input parameter and the pre-condition indicates that the operation supports the named optional input parameter. Additionally, each such operation supports an exception `operation_failed_unsupported_optional_input_parameter_yyy` which is raised when (a) the pre-condition `supported_optional_input_parameter_yyy` is false and (b) the named optional input parameter is carrying information. The exception has the same entry and exit state.

Rule 3: each operation shall support a generic exception `operation_failed_internal_problem` which is raised when an internal problem occurs and that the operation cannot be completed. The exception has the same entry and exit state.

6.4 SCManagementOperations_1 Interface (M)

6.4.1 Operation listScManagementCapabilities (M)

6.4.1.1 Definition

This operation allows the IRPManager to determine on the Itf-N interface in which sequence the self-configuration steps are performed in NEs of a certain type, what is done by the NE in case a step does not perform normally and before which steps a stop point can be set, such that the self-configuration step halts and waits for a continuation request by the IRPManager.

This operation imports from operation `listSwmCapabilities` defined in 32.532[7]. It delivers instances of `scManagementCapability`.

Information on Requirements Traceability:

| Referenced TS | Requirement label | Comment |
|--------------------|-------------------|---------|
| 3GPP TS 32.501 [6] | REQ_SCMAN_FUN_1 | |
| 3GPP TS 32.501 [6] | REQ_SCSW_FUN_4 | |
| 3GPP TS 32.501 [6] | REQ_SCSW_FUN_5 | |

6.4.1.2 Input parameters

Same as operation `listSwmCapabilities` defined in 32.532[7].

6.4.1.3 Output parameters

| Parameter Name | Qualifier | Matching Information | Comment |
|-------------------------------|-----------|---|--|
| <code>capabilitiesList</code> | M | <code>swm.scManagementCapabilitiesList</code> | List of <code>scManagementCapability</code> instances and their content. Each entry in the list contains: <ul style="list-style-type: none"> • Id of <code>scManagementCapability</code> • <code>nEInformation</code> of <code>scManagementCapability</code> • optionally <code>swVersionToBeInstalledOfferList</code> of <code>scManagementCapability</code> • <code>stepsAndOfferedStopPointList</code> of <code>scManagementCapability</code> • <code>offeredFinalAdministrativeStateInformation</code> of <code>scManagementCapability</code> |
| <code>result</code> | M | <code>swm.result</code> | <code>result=success</code> and empty <code>capabilitiesList</code> mean: No instance found. |

Same as operation `listSwmCapabilities` defined in 32.532[7]. The entries in the `capabilityList` refer to instances of `scManagementCapability`.

6.4.1.4 Pre-condition

Same as operation `listSwmCapabilities` defined in 32.532[7].

6.4.1.5 Post-condition

Same as operation `listSwmCapabilities` defined in 32.532[7].

6.4.1.6 Exceptions

Same as operation `listSwmCapabilities` defined in 32.532[7].

6.4.2 Operation listScManagementProfiles (M)

6.4.2.1 Definition

This operation allows the IRPManager to find out which instances of `scManagementProfile` are valid for NEs of a certain type.

This operation imports from operation `listSwmProfiles` defined in 32.532[7]. It delivers instances of `scManagementProfiles`.

Information on Requirements Traceability:

| Referenced TS | Requirement label | Comment |
|--------------------|-------------------|---------|
| 3GPP TS 32.501 [6] | REQ_SCMAN_FUN_1 | |
| 3GPP TS 32.501 [6] | REQ_SCMON_FUN_2 | |

6.4.2.2 Input parameters

Same as operation `listSwmProfiles` defined in 32.532[7].

6.4.2.3 Output parameters

Same as operation `listSwmProfiles` defined in 32.532[7].

6.4.2.4 Pre-condition

Same as operation `listSwmProfiles` defined in 32.532[7].

6.4.2.5 Post-condition

Same as operation `listSwmProfiles` defined in 32.532[7].

6.4.2.6 Exceptions

6.4.2.6.1 exceptionName

Same as operation `listSwmProfiles` defined in 32.532[7].

6.4.3 Operation createScManagementProfile (M)

6.4.3.1 Definition

This operation allows the IRPManager to establish an instance of `scManagementProfile` to be valid for NEs of a certain type.

This operation imports from operation `createSwmProfile` defined in 32.532[7].

Information on Requirements Traceability:

| Referenced TS | Requirement label | Comment |
|--------------------|-------------------|---------|
| 3GPP TS 32.501 [6] | REQ_SCMAN_FUN_2 | |

6.4.3.2 Input parameters

Same as operation `createSwmProfile` defined in 32.532[7].

6.4.3.3 Output parameters

Same as operation `createSwmProfile` defined in 32.532[7].

6.4.3.4 Pre-condition

Same as operation `createSwmProfile` defined in 32.532[7].

6.4.3.5 Post-condition

Same as operation `createSwmProfile` defined in 32.532[7].

6.4.3.6 Exceptions

6.4.3.6.1 `exceptionName`

Same as operation `createSwmProfile` defined in 32.532[7].

6.4.4 Operation `deleteScManagementProfile` (M)

6.4.4.1 Definition

This operation allows the IRPManager to delete an instance of `scManagementProfile`.

This operation imports from operation `deleteSwmProfile` defined in 32.532[7].

Information on Requirements Traceability:

| Referenced TS | Requirement label | Comment |
|--------------------|-------------------|---------|
| 3GPP TS 32.501 [6] | REQ_SCMAN_FUN_2 | |

6.4.4.2 Input parameters

Same as operation `deleteSwmProfile` defined in 32.532[7].

6.4.4.3 Output parameters

Same as operation `deleteSwmProfile` defined in 32.532[7].

6.4.4.4 Pre-condition

Same as operation `deleteSwmProfile` defined in 32.532[7].

6.4.4.5 Post-condition

Same as operation `deleteSwmProfile` defined in 32.532[7].

6.4.4.6 Exceptions

6.4.4.6.1 `exceptionName`

Same as operation `deleteSwmProfile` defined in 32.532[7].

6.4.5 Operation `listScProcesses` (M)

6.4.5.1 Definition

This operation allows the IRPManager to find out the status of one or several `scProcess` instances.

This operation imports from operation `listSwmProcesses` defined in 32.532[7].

Information on Requirements Traceability:

| Referenced TS | Requirement label | Comment |
|--------------------|-------------------|---------|
| 3GPP TS 32.501 [6] | REQ_SCMON_FUN_4 | |

6.4.5.2 Input parameters

Same as operation `listSwmProcesses` defined in 32.532[7].

6.4.5.3 Output parameters

Same as operation `listSwmProcesses` defined in 32.532[7].

6.4.5.4 Pre-condition

Same as operation `listSwmProcesses` defined in 32.532[7].

6.4.5.5 Post-condition

Same as operation `listSwmProcesses` defined in 32.532[7].

6.4.5.6 Exceptions

6.4.5.6.1 `exceptionName`

Same as operation `listSwmProcesses` defined in 32.532[7].

6.4. Operation `resumeScProcess` (M)

6.4.6.1 Definition

This operation allows the IRPManager to resume a self-configuration process which currently has been suspended at a stop point.

This operation imports from operation `resumeSvmProcess` defined in 32.532[7].

Information on Requirements Traceability:

| Referenced TS | Requirement label | Comment |
|--------------------|-------------------|---------|
| 3GPP TS 32.501 [6] | REQ_SCMAN_FUN_3 | |

6.4.6.2 Input parameters

Same as operation `resumeSvmProcess` defined in 32.532[7].

6.4.6.3 Output parameters

Same as operation `resumeSvmProcess` defined in 32.532[7].

6.4.6.4 Pre-condition

Same as operation `resumeSvmProcess` defined in 32.532[7].

6.4.6.5 Post-condition

Same as operation `resumeSvmProcess` defined in 32.532[7].

6.4.6.6 Exceptions

6.4.6.6.1 exceptionName

Same as operation `resumeSvmProcess` defined in 32.532[7].

6.4.7 Operation `terminateScProcess` (M)

6.4.7.1 Definition

This operation allows the IRPManager to terminate a self-configuration process which is currently ongoing.

After termination it is not possible to resume the terminated self-configuration process again.

This operation imports from operation `terminateSvmProcess` defined in 32.532[7].

Information on Requirements Traceability:

| Referenced TS | Requirement label | Comment |
|--------------------|-------------------|---------|
| 3GPP TS 32.501 [6] | REQ_SCMAN_FUN_4 | |

6.4.7.2 Input parameters

Same as operation `terminateSvmProcess` defined in 32.532[7].

6.4.7.3 Output parameters

Same as operation `terminateSvmProcess` defined in 32.532[7].

6.4.7.4 Pre-condition

Same as operation `terminateSwmProcess` defined in 32.532[7].

6.4.7.5 Post-condition

Same as operation `terminateSwmProcess` defined in 32.532[7].

6.4.7.6 Exceptions

6.4.7.6.1 `exceptionName`

Same as operation `terminateSwmProcess` defined in 32.532[7].

6.5 SCManagementOperations_2 Interface (O)

6.5.1 Operation changeScManagementProfile (O)

6.5.1.1 Definition

This operation allows the IRPManager to change an instance of `scManagementProfile`.

This operation imports from operation `changeSwmProfile` defined in 32.532[7].

Information on Requirements Traceability:

| Referenced TS | Requirement label | Comment |
|--------------------|-------------------|---------|
| 3GPP TS 32.501 [6] | REQ_SCSW_FUN_6 | |

6.5.1.2 Input parameters

Same as operation `changeSwmProfile` defined in 32.532[7].

6.5.1.3 Output parameters

Same as operation `changeSwmProfile` defined in 32.532[7].

6.5.1.4 Pre-condition

Same as operation `changeSwmProfile` defined in 32.532[7].

6.5.1.5 Post-condition

Same as operation `changeSwmProfile` defined in 32.532[7].

6.5.1.6 Exceptions

6.5.1.6.1 exceptionName

Same as operation `changeSwmProfile` defined in 32.532[7].

6.6 SCManagementNotification_1 Interface (M)

6.6.1 Notification notifyScManagementProfileCreation (M)

6.6.1.1 Definition

This notification conveys information about a creation of an instance of IOC `scManagementProfile`.

This operation imports from notification `notifySwmProfileCreation` defined in 32.532[7].

Information on Requirements Traceability:

| Referenced TS | Requirement label | Comment |
|--------------------|-------------------|---------|
| 3GPP TS 32.501 [6] | REQ_SCMAN_FUN_2 | |
| 3GPP TS 32.501 [6] | REQ_SCMON_FUN_3 | |

6.6.1.2 Input parameters

Same as notification `notifySwmProfileCreation` defined in 32.532[7].

6.6.1.3 Triggering event

6.6.1.3.1 From state

Same as notification `notifySwmProfileCreation` defined in 32.532[7].

6.6.1.3.2 To state

Same as notification `notifySwmProfileCreation` defined in 32.532[7].

6.6.2 Notification `notifyScManagementProfileDeletion` (M)

6.6.2.1 Definition

This notification conveys information about the deletion of an instance of IOC `scManagementProfile`.

This operation imports from notification `notifySwmProfileDeletion` defined in 32.532[7].

Information on Requirements Traceability:

| Referenced TS | Requirement label | Comment |
|--------------------|-------------------|---------|
| 3GPP TS 32.501 [6] | REQ_SCMAN_FUN_2 | |
| 3GPP TS 32.501 [6] | REQ_SCMON_FUN_3 | |

6.6.2.2 Input parameters

Same as notification `notifySwmProfileDeletion` defined in 32.532[7].

6.6.2.3 Triggering event

6.6.2.3.1 From state

Same as notification `notifySwmProfileDeletion` defined in 32.532[7].

6.6.2.3.2 To state

Same as notification `notifySwmProfileDeletion` defined in 32.532[7].

6.6.3 Notification `notifyScProcessCreation` (M)

6.6.3.1 Definition

This notification conveys information about the creation of an instance of IOC `scProcess`.

This operation imports from notification `notifySwmProcessCreation` defined in 32.532[7].

Information on Requirements Traceability:

| Referenced TS | Requirement label | Comment |
|--------------------|-------------------|---------|
| 3GPP TS 32.501 [6] | REQ_SCMON_FUN_5 | |
| 3GPP TS 32.501 [6] | REQ_SCSW_FUN_6 | |

6.6.3.2 Input parameters

Same as notification `notifySwmProcessCreation` defined in 32.532[7].

6.6.3.3 Triggering event

6.6.3.3.1 From state

Same as notification `notifySwmProcessCreation` defined in 32.532[7].

6.6.3.3.2 To state

Same as notification `notifySwmProcessCreation` defined in 32.532[7].

6.6.4 Notification `notifyScProcessStage` (M)

6.6.4.1 Definition

This notification conveys information about progress of a self configuration. It also reports the arrival at a `stopPoint` (`stepProgress` of a step in `stepInfoList` changed value to `awaitingResume`) or leaving a stop point (`stepProgress` of a step in `stepInfoList` changed value from `awaitingResume`).

This operation imports from notification `notifySwmProcessStage` defined in 32.532[7].

Information on Requirements Traceability:

| Referenced TS | Requirement label | Comment |
|--------------------|-------------------|---------|
| 3GPP TS 32.501 [6] | REQ_SCMON_FUN_2 | |
| 3GPP TS 32.501 [6] | REQ_SCMON_FUN_5 | |
| 3GPP TS 32.501 [6] | REQ_SCMON_FUN_6 | |
| 3GPP TS 32.501 [6] | REQ_SCOCE_FUN_2 | |

6.6.4.2 Input parameters

Same as notification `notifySwmProcessStage` defined in 32.532[7].

6.6.4.3 Triggering event

6.6.4.3.1 From state

| Referenced TS | Requirement label | Comment |
|---------------|-------------------|---------|
| | | |

Same as notification `notifySwmProcessStage` defined in 32.532[7].

6.6.4.3.2 To state

Same as notification `notifySwmProcessStage` defined in 32.532[7].

6.6.5 Notification notifyScProcessDeletion (M)

6.6.5.1 Definition

This notification conveys information about the deletion of an instance of IOC `scProcess` and what triggered the deletion.

IRPAgent shall also send out this notification in case of a process termination caused by an exception, for example IRP Agent terminates the process because it had to wait too long after a suspend operation.

This operation imports from notification `notifySvmProcessDeletion` defined in 32.532[7].

Information on Requirements Traceability:

| Referenced TS | Requirement label | Comment |
|--------------------|-------------------|---------|
| 3GPP TS 32.501 [6] | REQ_SCMON_FUN_5 | |
| 3GPP TS 32.501 [6] | REQ_SCSW_FUN_6 | |

6.6.5.2 Input parameters

Same as notification `notifySvmProcessDeletion` defined in 32.532[7].

6.6.5.3 Triggering event

6.6.5.3.1 From state

Same as notification `notifySvmProcessDeletion` defined in 32.532[7].

6.6.5.3.2 To state

Same as notification `notifySvmProcessDeletion` defined in 32.532[7].

6.6.6 Notification notifyNewScManagementCapabilityAvailability (M)

6.6.6.1 Definition

This notification conveys information about the availability of a new `scManagementCapability` instance.

Information on Requirements Traceability:

| Referenced TS | Requirement label | Comment |
|--------------------|-------------------|---------|
| 3GPP TS 32.501 [6] | REQ_SCSW_FUN_5 | |

6.6.6.2 Input parameters

| Parameter Name | Qualifiers | Matching Information | Comment |
|--|------------|--|-------------|
| Id | M,Y | swm.id | See 32.532 |
| nEInformation | M,Y | swm.nEInformation | See 32.532 |
| stepsAndOfferedStopPointList | M,N | swm.stepsAndOfferedStopPointList | See 32.5325 |
| offeredFinalAdministrativeStateInformation | M,N | swm.offeredFinalAdministrativeStateInformation | See 32.532 |
| swVersionToBeInstalledOfferList | CM, N | swVersionToBeInstalledOfferList | See 32.532 |

*) See 32.532 §4.3.4.2

6.6.6.3 Triggering event

6.6.6.3.1 From state

| Assertion Name | Definition |
|------------------------|---|
| newCapabilityAvailable | A new self-configuration capability is available. |

6.6.6.3.2 To state

| Assertion Name | Definition |
|---------------------|---|
| irpManagersInformed | IRPManager are informed about the new capability. |

6.7 SCManagementNotification_2 Interface (O)

6.7.1 Notification notifyScManagementProfileChange (O)

6.7.1.1 Definition

This notification conveys information about a change of an instance of IOC `scManagementProfile`.

This operation imports from notification `notifySwmProfileChange` defined in 32.532[7].

Information on Requirements Traceability:

| Referenced TS | Requirement label | Comment |
|--------------------|-------------------|---------|
| 3GPP TS 32.501 [6] | REQ_SCSW_FUN_6 | |

6.7.1.2 Input parameters

Same as notification `notifySwmProfileChange` defined in 32.532[7].

6.7.1.3 Triggering event

6.7.1.3.1 From state

Same as notification `notifySwmProfileChange` defined in 32.532[7].

6.7.33.2 To state

Same as notification `notifySwmProfileChange` defined in 32.532[7].

Annex A (informative): Change history

| Change history | | | | | | | |
|----------------|--------|-----------|-----|-----|--|-------|-------|
| Date | TSG # | TSG Doc. | CR | Rev | Subject/Comment | Old | New |
| 2008-12 | SP-42 | SP-080714 | | | Submitted to SA#42 for information and approval | 1.0.0 | 8.0.0 |
| 2009-03 | SP-43 | SP-090207 | 001 | -- | Usage of create-/delete-/change-notifications in context of self-configuration | 8.0.0 | 8.1.0 |
| 2009-12 | SAP-46 | SP-090718 | 002 | -- | Correct reference for NotifyScManagementProfileDeletion | 8.1.0 | 8.2.0 |

History

| Document history | | |
|-------------------------|---------------|-------------|
| V8.0.0 | February 2009 | Publication |
| V8.1.0 | April 2009 | Publication |
| V8.2.0 | January 2010 | Publication |
| | | |
| | | |