

# ETSI TS 132 662 V14.0.0 (2017-05)



TECHNICAL SPECIFICATION

**Digital cellular telecommunications system (Phase 2+) (GSM);  
Universal Mobile Telecommunications System (UMTS);  
LTE;  
Telecommunication management;  
Configuration Management (CM);  
Kernel CM Information Service (IS)  
(3GPP TS 32.662 version 14.0.0 Release 14)**



---

Reference

RTS/TSGS-0532662ve00

---

Keywords

GSM,LTE,UMTS

**ETSI**

650 Route des Lucioles  
F-06921 Sophia Antipolis Cedex - FRANCE

Tel.: +33 4 92 94 42 00 Fax: +33 4 93 65 47 16

Siret N° 348 623 562 00017 - NAF 742 C  
Association à but non lucratif enregistrée à la  
Sous-Préfecture de Grasse (06) N° 7803/88

---

**Important notice**

The present document can be downloaded from:

<http://www.etsi.org/standards-search>

The present document may be made available in electronic versions and/or in print. The content of any electronic and/or print versions of the present document shall not be modified without the prior written authorization of ETSI. In case of any existing or perceived difference in contents between such versions and/or in print, the only prevailing document is the print of the Portable Document Format (PDF) version kept on a specific network drive within ETSI Secretariat.

Users of the present document should be aware that the document may be subject to revision or change of status.

Information on the current status of this and other ETSI documents is available at

<https://portal.etsi.org/TB/ETSIDeliverableStatus.aspx>

If you find errors in the present document, please send your comment to one of the following services:

<https://portal.etsi.org/People/CommiteeSupportStaff.aspx>

---

**Copyright Notification**

No part may be reproduced or utilized in any form or by any means, electronic or mechanical, including photocopying and microfilm except as authorized by written permission of ETSI.

The content of the PDF version shall not be modified without the written authorization of ETSI.

The copyright and the foregoing restriction extend to reproduction in all media.

© European Telecommunications Standards Institute 2017.

All rights reserved.

**DECT™**, **PLUGTESTS™**, **UMTS™** and the ETSI logo are Trade Marks of ETSI registered for the benefit of its Members.

**3GPP™** and **LTE™** are Trade Marks of ETSI registered for the benefit of its Members and of the 3GPP Organizational Partners.

**oneM2M** logo is protected for the benefit of its Members

**GSM®** and the GSM logo are Trade Marks registered and owned by the GSM Association.

---

## Intellectual Property Rights

IPRs essential or potentially essential to the present document may have been declared to ETSI. The information pertaining to these essential IPRs, if any, is publicly available for **ETSI members and non-members**, and can be found in ETSI SR 000 314: *"Intellectual Property Rights (IPRs); Essential, or potentially Essential, IPRs notified to ETSI in respect of ETSI standards"*, which is available from the ETSI Secretariat. Latest updates are available on the ETSI Web server (<https://ipr.etsi.org>).

Pursuant to the ETSI IPR Policy, no investigation, including IPR searches, has been carried out by ETSI. No guarantee can be given as to the existence of other IPRs not referenced in ETSI SR 000 314 (or the updates on the ETSI Web server) which are, or may be, or may become, essential to the present document.

---

## Foreword

This Technical Specification (TS) has been produced by ETSI 3rd Generation Partnership Project (3GPP).

The present document may refer to technical specifications or reports using their 3GPP identities, UMTS identities or GSM identities. These should be interpreted as being references to the corresponding ETSI deliverables.

The cross reference between GSM, UMTS, 3GPP and ETSI identities can be found under <http://webapp.etsi.org/key/queryform.asp>.

---

## Modal verbs terminology

In the present document "**shall**", "**shall not**", "**should**", "**should not**", "**may**", "**need not**", "**will**", "**will not**", "**can**" and "**cannot**" are to be interpreted as described in clause 3.2 of the [ETSI Drafting Rules](#) (Verbal forms for the expression of provisions).

"**must**" and "**must not**" are **NOT** allowed in ETSI deliverables except when used in direct citation.

# Contents

Intellectual Property Rights .....	2
Foreword.....	2
Modal verbs terminology.....	2
Foreword.....	5
Introduction .....	5
1 Scope .....	6
2 References .....	6
3 Definitions and abbreviations.....	7
3.1 Definitions .....	7
3.2 Abbreviations .....	8
4 System overview .....	9
4.1 System Context .....	9
4.2 Compliance rules.....	9
5 Modelling approach.....	10
6 Information Object Classes (IOCs) .....	10
6.1 Imported Information entities and local labels .....	10
6.2 Class diagram .....	10
6.2.1 Attributes and relationships .....	10
6.2.2 Inheritance .....	10
6.3 Information Object Class Definitions.....	11
6.3.1 KernelCmIRP .....	11
6.3.1.1 Definition .....	11
6.3.2 ManagedEntity.....	11
6.3.2.1 Definition .....	11
6.4 Information relationship definitions .....	11
6.4.1 containment (M) .....	11
6.4.1.1 Definition .....	11
6.4.1.2 Role .....	11
6.4.1.3 Constraint .....	11
7 Interface Definition .....	12
7.1 Class diagram .....	12
7.2 Generic rules .....	12
7.3 Interface KernelCmIRPOperations.....	13
7.3.1 Operation getNRMIRPVersion (M).....	13
7.3.1.1 Definition .....	13
7.3.1.2 Input parameters.....	13
7.3.1.3 Output parameters .....	13
7.3.1.4 Pre-condition.....	13
7.3.1.5 Post-condition .....	13
7.3.1.6 Exceptions .....	14
7.4 Interface KernelCmIRPNotifications_1 .....	15
7.4.1 notifyObjectCreation (O) .....	15
7.4.1.1 Definition .....	15
7.4.1.2 Input Parameters .....	15
7.4.1.3 Triggering Event .....	16
7.4.1.3.1 From-state.....	16
7.4.1.3.2 To-state.....	16
7.5 Interface KernelCmIRPNotifications_2 .....	16
7.5.1 notifyObjectDeletion (O) .....	16
7.5.1.1 Definition .....	16
7.5.1.2 Input Parameters .....	16

7.5.1.3	Triggering Event .....	16
7.5.1.3.1	From-state .....	16
7.5.1.3.2	To-state .....	17
7.6	Interface KernelCmIRPNotifications_3 .....	17
7.6.1	notifyAttributeValueChange (O) .....	17
7.6.6.1	Definition .....	17
7.6.6.2	Input Parameters .....	17
7.6.6.3	Triggering Event .....	17
7.6.6.3.1	From-state .....	17
7.6.6.3.2	To-state .....	18
7.7	Interface KernelCmIRPNotifications_4 .....	19
7.7.1	notifyCMSynchronizationRecommended (O) .....	19
7.7.1.1	Definition .....	19
7.7.1.2	Input Parameters .....	20
7.7.1.3	Triggering Event .....	20
7.7.1.3.1	From-state .....	20
7.7.1.3.2	To-state .....	20
7.8	Interface KernelCmIRPNotifications_5 .....	21
7.8.1	notifyStateChange (O) .....	21
7.8.1.1	Definition .....	21
7.8.1.2	Input parameters .....	21
7.8.1.3	Triggering Event .....	21
7.8.1.3.1	From-state .....	21
7.8.1.3.2	To-state .....	21
<b>Annex A (normative):</b>	<b>Notification/Event Types .....</b>	<b>22</b>
<b>Annex B (informative):</b>	<b>Change history .....</b>	<b>23</b>
History .....		24

---

# Foreword

This Technical Specification has been produced by the 3<sup>rd</sup> Generation Partnership Project (3GPP).

The contents of the present document are subject to continuing work within the TSG and may change following formal TSG approval. Should the TSG modify the contents of the present document, it will be re-released by the TSG with an identifying change of release date and an increase in version number as follows:

Version x.y.z

where:

- x the first digit:
  - 1 presented to TSG for information;
  - 2 presented to TSG for approval;
  - 3 or greater indicates TSG approved document under change control.
- y the second digit is incremented for all changes of substance, i.e. technical enhancements, corrections, updates, etc.
- z the third digit is incremented when editorial only changes have been incorporated in the document.

---

# Introduction

The present document is part of a TS-family covering the 3<sup>rd</sup> Generation Partnership Project; Technical Specification Group Services and System Aspects; Telecommunication management; as identified below:

32.661 Configuration Management (CM); Kernel CM Requirements

**32.662 Configuration Management (CM); Kernel CM Information Service (IS)**

32.666: Configuration Management (CM); Kernel CM Integration Reference Point (IRP); Solution Set (SS) definitions

Configuration Management (CM), in general, provides the operator with the ability to assure correct and effective operation of the 3G network as it evolves. CM actions have the objective to control and monitor the actual configuration on the Network Elements (NEs) and Network Resources (NRs), and they may be initiated by the operator or by functions in the Operations Systems (OSs) or NEs.

CM actions may be requested as part of an implementation programme (e.g. additions and deletions), as part of an optimisation programme (e.g. modifications), and to maintain the overall Quality of Service (QoS). The CM actions are initiated either as single actions on single NEs of the 3G network, or as part of a complex procedure involving actions on many resources/objects in one or several NEs.

---

# 1 Scope

The present document defines Integration Reference Point (IRP) through which an 'IRP Agent' (typically an Element Manager or Network Element) can communicate Configuration Management related information to one or several 'IRP Managers' (typically Network Managers).

The function of this Kernel CM IRP Information Service is to define an interface that provides the essential CM services. While it is not expected that the Kernel CM IRP alone will provide adequate CM capability, The Kernel CM IRP is expected to provide the common supporting capability required for other IRPs such as the Basic CM IRP or the Bulk CM IRP, each of which require the Kernel CM IRP.

---

# 2 References

The following documents contain provisions, which, through reference in this text, constitute provisions of the present document.

- References are either specific (identified by date of publication, edition number, version number, etc.) or non-specific.
- For a specific reference, subsequent revisions do not apply.
- For a non-specific reference, the latest version applies. In the case of a reference to a 3GPP document (including a GSM document), a non-specific reference implicitly refers to the latest version of that document *in the same Release as the present document*.

- [1] 3GPP TS 32.101: "Telecommunication management; Principles and high level requirements".
- [2] 3GPP TS 32.102: "Telecommunication management; Architecture".
- [3] 3GPP TS 32.302: "Telecommunication management; Configuration Management (CM); Notification Integration Reference Point (IRP): Information Service (IS)".
- [4] 3GPP TS 32.312: "Telecommunication management; Generic Integration Reference Point (IRP) management; Information Service (IS)".
- [5] Void.
- [6] 3GPP TS 32.672: "Telecommunication management; Configuration Management (CM); State Management Integration Reference Point (IRP): Information Service (IS)".
- [7] ITU-T Recommendation X.710 (1997): "Information technology - Open Systems Interconnection - Common Management Information Service".
- [8] ITU-T Recommendation X.721 (1992): "Information technology - Open Systems Interconnection - Structure of Management Information: Definition of management information".
- [9] ITU-T Recommendation X.730 (1992): "Information technology - Open Systems Interconnection - Systems Management: Object Management Function".
- [10] ITU-T Recommendation X.733 (1992): "Information technology - Open Systems Interconnection - Systems Management: Alarm reporting function".
- [11] - [12] Void.
- [13] 3GPP TS 32.300: "Telecommunication management; Configuration Management (CM); Name convention for Managed Objects".
- [14] 3GPP TS 32.600: "Telecommunication management; Configuration Management (CM); Concept and high-level requirements".
- [15] ITU-T Recommendation X.720: "Information technology - Open Systems Interconnection - Structure of management information: Management information model".

- [16] 3GPP TS 32.623: "Telecommunication management; Configuration Management (CM); Generic network resources Integration Reference Point (IRP): Common Object Request Broker Architecture (CORBA) Solution Set (SS)".
- [17] 3GPP TS 32.643: "Telecommunication management; Configuration Management (CM); UTRAN network resources Integration Reference Point (IRP): Common Object Request Broker Architecture (CORBA) Solution Set (SS)".
- [18] 3GPP TS 32.642: "Telecommunication management; Configuration Management (CM); UTRAN network resources Integration Reference Point (IRP): Network Resource Model (NRM)".
- [19] 3GPP TS 32.150: "Telecommunication management; Integration Reference Point (IRP) Concept and definitions".
- [20] 3GPP TS 32.311: "Telecommunication management; Generic Integration Reference Point (IRP) management: Requirements.

---

## 3 Definitions and abbreviations

### 3.1 Definitions

For the purposes of the present document, the following terms and definitions apply. For terms and definitions not found here, please refer to TS 32.101 [1], TS 32.102 [2] and TS 32.600 [14].

**association:** In general it is used to model relationships between Managed Objects. Associations can be implemented in several ways, such as:

- (1) name bindings,
- (2) reference attributes, and
- (3) association objects.

This IRP stipulates that containment associations shall be expressed through name bindings, but it does not stipulate the implementation for other types of associations as a general rule. These are specified as separate entities in the object models (UML diagrams). Currently however, all (non-containment) associations are modelled by means of reference attributes of the participating MOs.

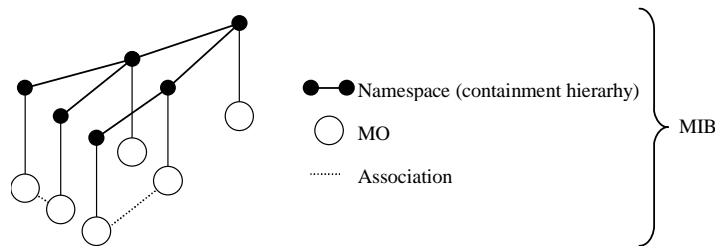
**Managed Element (ME):** instance of the Managed Object Class G3ManagedElement

**Managed Object (MO):** In the context of the present document, a Managed Object (MO) is a software object that encapsulates the manageable characteristics and behaviour of a particular Network Resource. The MO is instance of a MO class defined in a MIM/NRM. An MO class has **attributes** that provide information used to characterize the objects that belong to the class. Furthermore, an MO class can have **operations** that represent the behaviour relevant for that class. An MO class may support **notifications** that provide information about an event occurrence within a network resource.

**Management Information Base (MIB):** A MIB is an instance of an NRM and has some values on the defined attributes and associations specific for that instance. In the context of the present document, an MIB consists of:

- (1) a Name space (describing the MO containment hierarchy in the MIB through Distinguished Names),
- (2) a number of Managed Objects with their attributes, and
- (3) a number of Associations between these MOs. Also note that TMN (ITU-T Recommendation X.710 [7]) defines a concept of a Management Information Tree (also known as a Naming Tree) that corresponds to the name space (containment hierarchy) portion of this MIB definition. Figure 3.1 depicts the relationships between a Name space and a number of participating MOs (the shown association is of a non-containment type).





**Figure 3.1: Relationships between a Name space and a number of participating MOs**

**Management Information Model (MIM):** Also referred to as NRM – see the definition below.

**Name space:** A name space is a collection of names. The IRP name convention (see TS 32.300 [13]) restricts the name space to a hierarchical containment structure, including its simplest form - the one-level, flat name space.

All Managed Objects in a MIB shall be included in the corresponding name space and the MIB/name space shall only support a strict hierarchical containment structure (with one root object). A Managed Object that contains another is said to be the superior (parent); the contained Managed Object is referred to as the subordinate (child). The parent of all MOs in a single name space is called a Local Root. The ultimate parent of all MOs of all managed systems is called the Global Root.

**Network Resource Model (NRM):** A model representing the actual managed telecommunications network resources that a System is providing through the subject IRP. An NRM describes Managed Object Classes, their associations, attributes and operations. The NRM is also referred to as "MIM" (see above), which originates from the ITU-T TMN.

**Node B:** A logical node responsible for radio transmission/reception in one or more cells to/from the User Equipment. It terminates the Iub interface towards the RNC.

## 3.2 Abbreviations

For the purposes of the present document, the following abbreviations apply:

CMIS	Common Management Information Service
CN	Core Network
CORBA	Common Object Request Broker Architecture
DN	Distinguished Name (see TS 32.300 [13])
EM	Element Manager
FM	Fault Management
IDL	Interface Definition Language
IRP	Integration Reference Point
ITU-T	International Telecommunication Union, Telecommunication Sector
ME	Managed Element
MIB	Management Information Base
MIM	Management Information Model
MO	Managed Object
MOC	Managed Object Class
MOI	Managed Object Instance
NE	Network Element
NM	Network Manager
NR	Network Resource
NRM	Network Resource Model
PM	Performance Management
RDN	Relative Distinguished Name (see TS 32.300 [13])
SNMP	Simple Network Management Protocol
SS	Solution Set
TMN	Telecommunications Management Network
UML	Unified Modelling Language
UMTS	Universal Mobile Telecommunications System
VSE	Vendor Specific Extensions

## 4 System overview

### 4.1 System Context

The general definition of the System Context for the present IRP is found in 3GPP TS 32.150 [19] subclause 4.7.

In addition, the set of related IRP(s) relevant to the present IRP is shown in the two diagrams below.

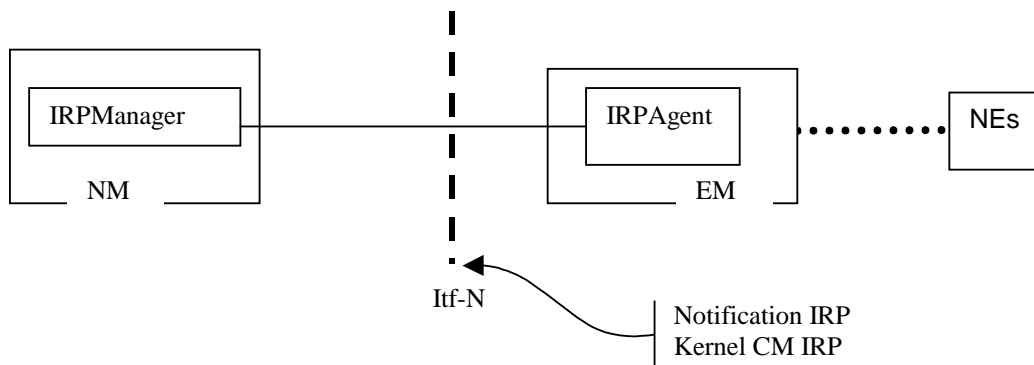


Figure 4.1: System Context A

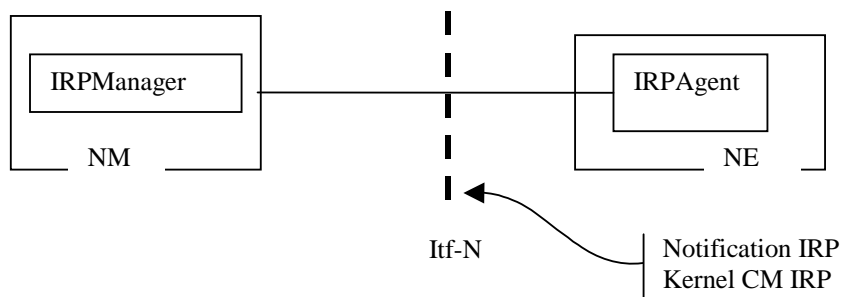


Figure 4.2: System Context B

### 4.2 Compliance rules

For general definitions of compliance rules related to qualifiers (Mandatory/Optional/Conditional) for *operations*, *notifications* and *parameters* (of operations and notifications) please refer to TS 32.150 [19].

An IRPAgent that incorporates vendor-specific extensions shall support normal communication with a 3GPP SA5-compliant IRPManager with respect to all Mandatory and Optional managed object classes, attributes, associations, operations, parameters and notifications without requiring the IRPManager to have any knowledge of the extensions.

Given that

- rules for vendor-specific extensions remain to be fully specified, and
- many scenarios under which IRPManager and IRPAgent interwork may exist,

it is recognised that the IRPManager, even though it is not required to have knowledge of vendor-specific extensions, may be required to be implemented with an awareness that extensions can exist and behave accordingly.

## 5 Modelling approach

See 3GPP TS 32.150 [19].

## 6 Information Object Classes (IOCs)

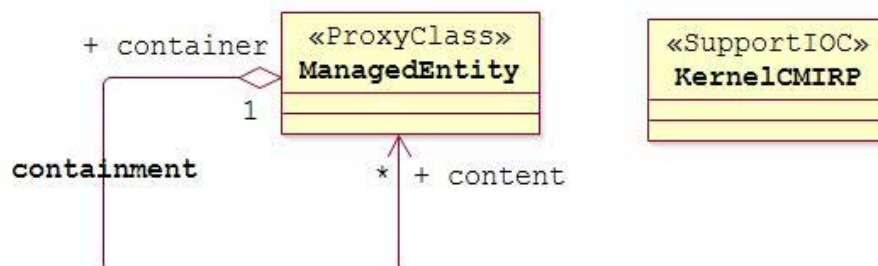
### 6.1 Imported Information entities and local labels

Label reference	Local label
32.312 [4], SupportIOC, ManagedGenericIRP	ManagedGenericIRP

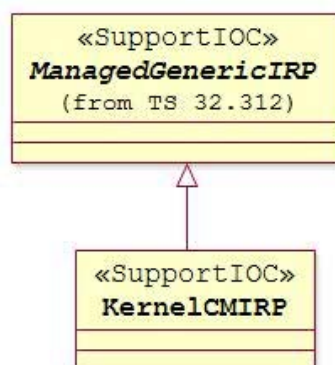
### 6.2 Class diagram

This sub-clause introduces the set of Support Information Object Classes (SupportIOCs) that encapsulate information within the IRPAgent. The intent is to identify the information required for the KernelCMIRP Agent implementation of its operations and notification emission. This sub-clause provides the overview of all SupportIOCs in UML. Subsequent sub-clauses provide more detailed specification of various aspects of these SupportIOCs.

#### 6.2.1 Attributes and relationships



#### 6.2.2 Inheritance



## 6.3 Information Object Class Definitions

### 6.3.1 KernelCmIRP

#### 6.3.1.1 Definition

KernelCmIRP is the representation of the Kernel configuration management capabilities specified by the present document. This SupportIOC inherits from ManagedGenericIRP SupportIOC specified in TS 32.312 [4].

### 6.3.2 ManagedEntity

#### 6.3.2.1 Definition

The IOC ManagedEntity represents the role that can be played by an instance of an IOC defined in Network Resources Models, e.g. Generic Network Resource Model, Core Network Resource Model, UTRAN Network Resource Model or GERAN Network Resource Model.

## 6.4 Information relationship definitions

### 6.4.1 containment (M)

#### 6.4.1.1 Definition

This represents the relationship containment as defined in ITU-T Recommendation X.720 [15].

#### 6.4.1.2 Role

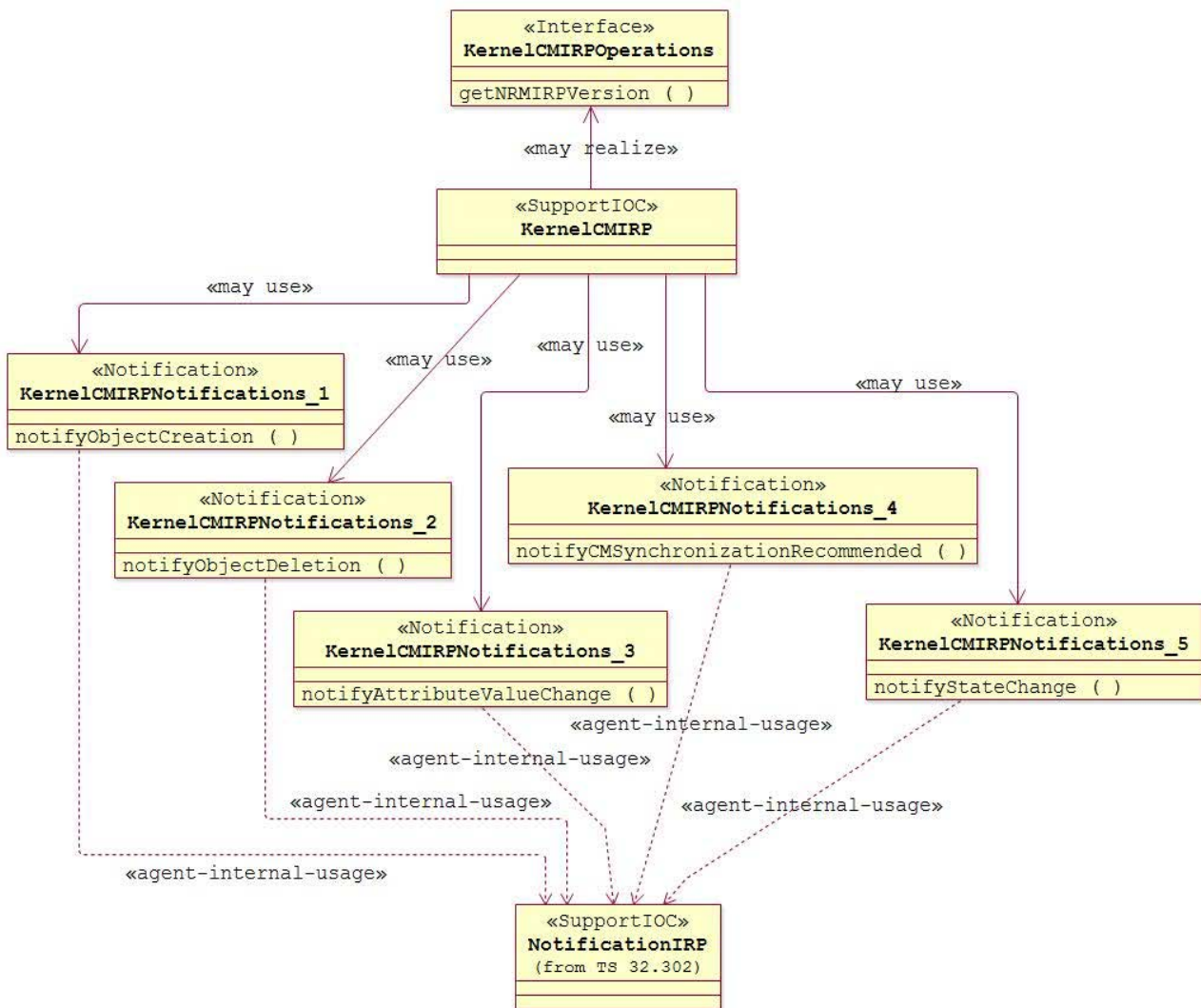
Name	Definition
container	It represents the capability, for an instance of a ManagedEntity, to contain other objects.
content	It represents the capability, for an instance of a ManagedEntity, to be contained in another object.

#### 6.4.1.3 Constraint

Name	Definition
inv_noSelfContainment	No instance of the IOC ManagedEntity can play both roles container and content in the same instance of the relationship containment.

# 7 Interface Definition

## 7.1 Class diagram



## 7.2 Generic rules

**Rule 1:** Each operation with at least one input parameter supports a pre-condition `valid_input_parameter` which indicates that all input parameters shall be valid with regards to their information type. Additionally, each such operation supports an exception `operation_failed_invalid_input_parameter` which is raised when pre-condition `valid_input_parameter` is false. The exception has the same entry and exit state.

**Rule 2:** Each operation with at least one optional input parameter supports a set of pre-conditions `supported_optional_input_parameter_xxx` where "xxx" is the name of the optional input parameter and the pre-condition indicates that the operation supports the named optional input parameter. Additionally, each such operation supports an exception `operation_failed_unsupported_optional_input_parameter_xxx` which is raised when (a) the pre-condition `supported_optional_input_parameter_xxx` is false and (b) the named optional input parameter is carrying information. The exception has the same entry and exit state.

**Rule 3:** Each operation shall support a generic exception `operation_failed_internal_problem` that is raised when an internal problem occurs and that the operation cannot be completed. The exception has the same entry and exit state.

## 7.3 Interface KernelCmIRPOperations

### 7.3.1 Operation getNRMIRPVersion (M)

#### 7.3.1.1 Definition

When the IRPManager invokes `getNRMIRPVersion` to find out the Network Resource IRP SS document versions (IRPVersions) supported by the IRPAgent, the IRPAgent shall respond, via the `versionNumberList` output parameter, with a list of supported Network Resource IRPversions. The rule for deriving the IRP document version number string is defined in TS 32.311 [20]. An example of this return value can contain two IRPversions, where one indicates the 3GPP Generic Network Resource IRPVersion (e.g. "32.623 V4.2" in case of CORBA implementation) while the other indicates the 3GPP UTRAN Network Resource IRPVersion (e.g. "32.643 V4.1" in case of CORBA implementation).

It is expected that vendors may provide vendor-specific extended capabilities and features (VSE) that are based on a 3GPP published specification. It is further expected that the vendor will publish these VSE in a document with an unambiguous identification.

If an IRPAgent does not support VSE, the `vSEVersionNumberList` parameter shall contain no information.

If an IRPAgent supports VSE, the `vSEVersionNumberList` parameter shall contain identification of one or more documents published by the vendor. The `versionNumberList` shall contain the IRPversions indicating the 3GPP Network Resource IRP specifications on which the VSE is based. The `versionNumberList` may only identify IRPversions that are consistent with the requirements of clause 4.2 of the present document and similar requirements statements in all CM and Network Resource IRPs. The convention to identify the vendor-specific document is not a subject of the present document. It is recommended that the identification should include (a) the 3GPP IRPVersion on which the VSE is based (b) the name of the vendor and (c) the identification of the VSE document and/or its version. The inclusion of the part-(b) is to avoid possible name conflict in a multi-vendor environment. An example would be "32.642 V4.0 Ericsson v.1". This sample indicates the identification of a document published by Ericsson that specifies a list of VSE that is based on the TS 32.642 V4.0.x. Note in this example, the IRPVersion "32.642 V4.0" shall also be present in the `versionNumberList`.

The lists returned by `versionNumberList` and `vSEVersionNumberList` shall not contain duplicates.

#### 7.3.1.2 Input parameters

None.

#### 7.3.1.3 Output parameters

Parameter Name	Qualifier	Matching Information	Comment
<code>versionNumberList</code>	M	ManagedGenericIRP.iRPVersion	It carries one or more SS version numbers supported by this IRP agent.
<code>vSEVersionNumberList</code>	M	ManagedGenericIRP.iRPVersion	It carries one or more identifications of vendor published documents containing VSE NRMs specifications.
<code>status</code>	M	ENUM (Operation succeeded, Operation failed)	If <code>operation_failed_internal_problem</code> status = <code>OperationFailed</code> .

#### 7.3.1.4 Pre-condition

None specific.

#### 7.3.1.5 Post-condition

None specific.

### 7.3.1.6 Exceptions

None specific.

## 7.4 Interface KernelCmIRPNotifications\_1

### 7.4.1 notifyObjectCreation (O)

#### 7.4.1.1 Definition

IRPAgent notifies the subscribed IRPManager that a new Managed Object has been created and that the new object satisfies the filter constraint expressed in IRPManager's `subscribe` operation (see TS 32.302 [3]). This notification is based on the `objectCreation` notification type specified in ITU-T Recommendation X.721 [8] and ITU-T Recommendation X.730 [9] (difference compared to these specifications are indicated in the description below).

#### 7.4.1.2 Input Parameters

Parameter Name	Qualifier	Matching Information	Comment
<code>objectClass</code>	M,Y	ManagedEntity.objectClass	Notification header - see [3]. It shall carry the ManagedEntity class name.
<code>objectInstance</code>	M,Y	ManagedEntity.objectInstance	Notification header - see [3]. It shall carry the DN of the ManagedEntity.
<code>notificationId</code>	M,N	--	Notification header - see [3].
<code>eventTime</code>	M,Y	--	Notification header - see [3]. It shall carry the ManagedEntity creation time.
<code>systemDN</code>	C,Y	--	Notification header - see [3].
<code>notificationType</code>	M,Y	Mapped to notificationType in [3] – see annex A.	Notification header - see [3].
<code>correlatedNotifications</code>	O,N	--	A set of notifications that are correlated to the subject notification. Defined in ITU-T Recommendation X.733 [10].
<code>additionalText</code>	O,N	--	It can contain further information in text on the creation of the MO. For notifications with <code>sourceIndicator=SON_operation</code> information about the involved SON functionality (like self-configuration, self-optimization, self-healing etc.) may be added here, if available.
<code>sourceIndicator</code>	O,N	ENUM( Resource_operation, Management_operation, SON_operation,Unknown)	This parameter, when present, indicates the source of the operation that led to the generation of this notification. It can have one of the following values: <ol style="list-style-type: none"> <li>resource operation: The notification was generated in response to an internal operation of the resource;</li> <li>management operation: The notification was generated in response to a management operation applied across the managed object boundary external to the managed object;</li> <li>SON operation: The notification was generated as result of a SON (Self Organising Network) process like self-configuration, self-optimization, self-healing etc. .</li> <li>unknown: It is not possible to determine the source of the operation.</li> </ol> <p>Remark: An IRPAgent may not in any case be aware that SON operation lead to the generation of this generation. In this case another value than <code>SON_operation</code> for <code>sourceIndicator</code> might be sent.</p>
<code>attributeList</code>	O,N	LIST OF SEQUENCE <AttributeName, AttributeValue>	The attributes (name/value pairs) of the created MO.



### 7.4.1.3 Triggering Event

#### 7.4.1.3.1 From-state

stateBeforeObjectCreation.

Assertion Name	Definition
stateBeforeObjectCreation	The number of instances of the IOC ManagedEntity is equal to N.

#### 7.4.1.3.2 To-state

stateAfterObjectCreation.

Assertion Name	Definition
stateAfterObjectCreation	The number of instances of the IOC ManagedEntity is equal to N + 1.

## 7.5 Interface KernelCmIRPNotifications\_2

### 7.5.1 notifyObjectDeletion (O)

#### 7.5.1.1 Definition

IRPAgent notifies the subscribed IRPManager of a deleted Managed Object. The IRPAgent invokes this notification because the subject notification satisfies the filter constraint expressed in the IRPManager subscribe operation (see TS 32.302 [3]). This notification is based on the objectDeletion notification type specified in ITU-T Recommendation X.721 [8] and ITU-T Recommendation X.730 [9] (difference compared to these specifications are indicated in the description below).

Note that when a Managed Object is deleted, all subordinate Managed Objects (i.e. the complete sub-tree of the MIB) are also deleted. Furthermore, all associations where the Managed Object participates are deleted.

#### 7.5.1.2 Input Parameters

Parameter Name	Qualifier	Matching Information	Comment
objectClass	M,Y	ManagedEntity.objectClass	See Table 7.4.1.2.
objectInstance	M,Y	ManagedEntity.objectInstance	See Table 7.4.1.2.
notificationId	M,N	--	See Table 7.4.1.2.
eventTime	M,Y	--	Notification header – see [3]. It shall carry the ManagedEntity deletion time.
systemDN	C,Y	--	See Table 7.4.1.2.
notificationType	M,Y	Mapped to notificationType in [3] – see annex A.	See Table 7.4.1.2.
correlatedNotifications	O,N	--	See Table 7.4.1.2.
additionalText	O,N	--	See Table 7.4.1.2.
sourceIndicator	O,N	See Table 7.4.1.2.	See Table 7.4.1.2.
attributeList	O,N	LIST OF SEQUENCE <AttributeName, AttributeValue>	The attributes (name/value pairs) of the deleted MO.

### 7.5.1.3 Triggering Event

#### 7.5.1.3.1 From-state

stateBeforeObjectDeletion.

Assertion Name	Definition
StateBeforeObjectDeletion	The number of instances of the IOC ManagedEntity is equal to N.

### 7.5.1.3.2 To-state

stateAfterObjectDeletion.

Assertion Name	Definition
stateAfterObjectDeletion	The number of instances of the IOC ManagedEntity is equal to N - 1.

## 7.6 Interface KernelCmlIRPNotifications\_3

### 7.6.1 notifyAttributeValueChange (O)

#### 7.6.6.1 Definition

IRPAgent notifies the subscribed IRPManager of a change of one or several attributes of a Managed Object in the NRM. The IRPAgent invokes this notification because the subject notification satisfies the filter constraint expressed in the IRPManager subscribe operation (see TS 32.302 [3]). This notification is based on the `attributeValueChange` notification type specified in ITU-T Recommendation X.721 [8] and ITU-T Recommendation X.730 [9] (difference compared to these specifications are indicated in the following table).

#### 7.6.6.2 Input Parameters

Parameter Name	Qualifier	Matching Information	Comment
<code>objectClass</code>	M,Y	<code>ManagedEntity.objectClass</code>	See Table 7.4.1.2.
<code>objectInstance</code>	M,Y	<code>ManagedEntity.objectInstance</code>	See Table 7.4.1.2.
<code>notificationId</code>	M,N	--	See Table 7.4.1.2.
<code>eventTime</code>	M,Y	--	Notification header - see [3]. It shall carry the attribute(s) value(s) changed time.
<code>systemDN</code>	C,Y	--	See Table 7.4.1.2.
<code>notificationType</code>	M,Y	Mapped to <code>notificationType</code> in [3] – see annex A.	See Table 7.4.1.2.
<code>correlatedNotifications</code>	O,N	--	See Table 7.4.1.2.
<code>additionalText</code>	O,N	--	See Table 7.4.1.2.
<code>sourceIndicator</code>	O,N	See Table 7.4.1.2.	See Table 7.4.1.2.
<code>attributeValueChange</code>	M,N	LIST OF SEQUENCE <AttributeName, NewAttributeValue, CHOICE [NULL, OldAttributeValue]>	The changed attributes (name/value pairs) of the MO (with both new and, optionally, old values).

#### 7.6.6.3 Triggering Event

##### 7.6.6.3.1 From-state

stateBeforeAttributeValueChange.

Assertion Name	Definition
stateBeforeAttributeValueChange	The subject attribute has a value at time T1.

## 7.6.6.3.2 To-state

stateAfterAttributeValueChange.

Assertion Name	Definition
stateAfterAttributeValueChange	The subject attribute has been changed to a value other than the value at time T1.

## 7.7 Interface KernelCmIRPNotifications\_4

### 7.7.1 notifyCMSynchronizationRecommended (O)

#### 7.7.1.1 Definition

IRPAgent notifies the subscribed IRPManager that part of or whole configuration information of the IRPAgent should be synchronized.

The configuration information may lose consistency between IRPAgent and IRPManager for several reasons, such as communication failure, NE or EM restarting/initialisation, new network elements being added into networks, etc. In such cases, the configuration information should be synchronized between IRPManager and IRPAgent. Normally, when there are changes in IRPAgent, these changes are sent to IRPManager through notifications like "notifyObjectCreation", "notifyObjectDeletion" or "notifyObjectAttributeValueChange". If there are large changes generated in the network, it may be inefficient to send lots of notifications to IRPManager through Itf-N. The notification "notifyCMSynchronizationRecommended" is used in this case to efficiently inform the IRPManager of large changes in CM.

In all cases, the baseMOClass, baseMOInstance and scope parameters specify the set of managed network resources whose information should be synchronized.

The recommendation is to send only this notifyCMSynchronizationRecommended notification in such event as described above, but there is no guarantee that the IRPAgent succeeds in suppressing all the other CM notifications related to MOs defined by the baseMOClass, baseMOInstance and scope parameters.

If the IRPAgent suppresses any of "notifyObjectCreation", "notifyObjectDeletion" or "notifyObjectAttributeValueChange", the IRPManager must subscribe the "notifyCMSynchronizationRecommended" in order to be aware of the changes.

Whenever notifications are suppressed, "notifyCMSynchronizationRecommended" must follow as early as possible.

### 7.7.1.2 Input Parameters

Parameter Name	Qualifier	Matching Information	Comment
objectClass	M,Y	KernelCMIRP.objectClass	Notification header - see [3]. It shall carry the KernelCMIRP class name.
objectInstance	M,Y	KernelCMIRP.objectInstance	Notification header - see [3]. It shall carry the DN of the KernelCMIRP
notificationId	M,N	--	See Table 7.4.1.2.
eventTime	M,Y	--	Notification header - see [3]. It shall carry the time when KernelCMIRP is recommending synchronization.
systemDN	C,Y	--	See Table 7.4.1.2.
notificationType	M,Y	Mapped to notificationType in [3] – see annex A	See Table 7.4.1.2.
baseMOClass	M,N	--	It specifies the class of the root managed entity of a whole subtree, of which the configuration information should be synchronized by NM.
baseMOInstance	M,N	--	It specifies the root managed entity of a whole subtree, of which the configuration information should be synchronized by NM.
scope	M,N	<pre>enum ScopeType {     BASE_ONLY,     BASE_NTH_LEVEL,     BASE_SUBTREE,     BASE_ALL };  struct ScopePara {     ScopeType type;     unsigned long level; };</pre>	The scope specifies the number of levels in the tree below the baseMOInstance which are affected by this notification.
additionalText	O,N	--	It can contain further information in text on this notification.

### 7.7.1.3 Triggering Event

#### 7.7.1.3.1 From-state

iRPAgentInitialisation OR largeChangesDetected

Assertion Name	Definition
iRPAgentInitialisation	The IPRAgent begins its internal initialisation and subsequently requires synchronization with the network resources.
largeChangesDetected	The IRPAgent has detected that large changes has taken place in the network, which requires synchronization with the network resources.

#### 7.7.1.3.2 To-state

iRPAgentSuccessEmitNotification

Assertion Name	Definition
iRPAgentSuccessEmitNotification	IRPAgent finished emitting notifyCMSynchronizationRecommended notification.

## 7.8 Interface KernelCmIRPNotifications\_5

### 7.8.1 notifyStateChange (O)

#### 7.8.1.1 Definition

IRPAgent notifies the subscribed IRPManager of a change of state and or status of a Managed Object in the NRM. The IRPAgent invokes this notification because the subject notification satisfies the filter constraint expressed in the IRPManager subscribe operation (see 3GPP TS 32.302 [3]).

This notification is in part based on the stateChange notification type specified in ITU-T Recommendation X.721 [8] and using state management definitions from 3GPP TS 32.672 [6].

#### 7.8.1.2 Input parameters

Parameter Name	Qualifier	Matching Information	Comment
objectClass	M,Y	ManagedEntity.objectClass	See Table 7.4.1.2.
objectInstance	M,Y	ManagedEntity.objectInstance	See Table 7.4.1.2.
notificationId	M, N	--	See Table 7.4.1.2.
eventTime	M,Y	--	Notification header - see [3]. It shall carry the ManagedEntity state changed time.
systemDN	C,Y	--	See Table 7.4.1.2.
notificationType	M,Y	Mapped to notificationType in [3] – see annex A	See Table 7.4.1.2.
stateChange	M,N	LIST OF SEQUENCE <StateName (M), NewStateValue (M), OldStateValue (O)>	The changed state values (name/value pairs) of the MO (with both new and, optionally, old values).
correlatedNotifications	O,N	--	See Table 7.4.1.2.
additionalText	O,N	--	It can contain further information in text on the attribute change of the MO.
sourceIndicator	O,N	See Table 7.4.1.2	See Table 7.4.1.2.

#### 7.8.1.3 Triggering Event

##### 7.8.1.3.1 From-state

stateBeforeStateChange.

Assertion Name	Definition
stateBeforeStateChange	The subject attribute has a value at time T1.

##### 7.8.1.3.2 To-state

stateAfterStateChange.

Assertion Name	Definition
stateAfterStateChange	The subject attribute has been changed to a value other than the value at time T1.

## Annex A (normative): Notification/Event Types

The Notification IRP: Information Service (3GPP TS 32.302 [3]) defines an attribute called `notificationType` that shall be present in all notifications. The present document defines an attribute called `eventType` that shall be present in all CM notifications defined herein. The mapping of this `eventType` to the `notificationType` is that they are semantically equal for the CM notifications. Thus, the event types described below shall be mapped to the `notificationType` of the notification header.

This annex lists and explains Event Types used by Kernel CM IRP and then lists the Event Types valid for each notification in this IRP.

Encoding of `eventType` is Solution Set dependent. For example, the value of `eventType` may be encoded as a numeric string in the CORBA SS.

The following tables may be extended in the future.

**Table A.1: Event Types**

Event Types	Explanation
Object creation	A notification of this type indicates that a new managed object instance has been created (as defined in ITU-T Recommendation X.721 [8] and ITU-T X.730 [9]).
Object deletion	A notification of this type indicates that a managed object instance has been deleted (as defined in ITU-T Recommendation X.721 [8] and ITU-T Recommendation X.730 [9]).
Attribute value change	A notification of this type indicates that the value(s) of one or more attributes have changed (as defined in ITU-T Recommendation X.721 [8] and ITU-T Recommendation X.730 [9]).
CM synchronization recommended	A notification of this type informs NM that part of or the whole configuration information of the managed system should be synchronized.
State change	A notification of this type indicates that the state and/or status of a managed object instance have changed (in part based on definitions from X.721 [8] and using state/status definitions from 3GPP TS 32.672 [6]).

**Table A.2: Event types applicable to each Notification**

Notification	Event Type
<code>notifyObjectCreation</code>	Object creation
<code>notifyObjectDeletion</code>	Object deletion
<code>notifyAttributeValueChange</code>	Attribute value change
<code>notifyCMSynchronizationRecommended</code>	CM synchronization recommended
<code>notifyStateChange</code>	State change

## Annex B (informative): Change history

Change history								
Date	TSG #	TSG Doc.	CR	Rev	Subject/Comment	Cat	Old	New
Mar 2002	SA_15	SP-020034	--	--	Submitted to TSG SA #15 for Information	--	1.0.0	
Sep 2002	SA_17	SP-020465	--	--	Submitted to TSG SA #17 for Approval	--	2.0.0	5.0.0
Mar 2003	SA_19	SP-030145	0001	--	Add description of notifyCMSynchronizationRecommended notification for KernelCM IRP.	B	5.0.0	6.0.0
Dec 2003	SA_22	SP-030630	0003	--	Correction of System Context	A	6.0.0	6.1.0
Mar 2004	SA_23	SP-040119	0005	--	Correction of System Context	A	6.1.0	6.2.0
Jun 2004	SA_24	SP-040260	0006	--	Add State Management Support to Kernel CM IRP IS 32.662	B	6.2.0	6.3.0
Jun 2005	SA_28	SP-050299	0007	--	Apply Generic System Context	F	6.3.0	6.4.0
Jun 2005	SA_28	SP-050329	0008	--	Apply Generic System Context – Align with TS 32.150	F	6.3.0	6.4.0
Sep 2005	SA_29	SP-050461	0009	--	Correct return value for the operation getNRMIRPVersion	F	6.4.0	6.5.0
Mar 2006	SA_31	SP-060089	0010	--	Use defined filter qualifier in mapping tables	F	6.5.0	6.6.0
Jun 2007	SA_36	--	--	--	Automatic upgrade to Rel-7 (no CR) at freeze of Rel-7. Deleted reference to CMIP SS, discontinued from R7 onwards.	--	6.6.0	7.0.0
Dec 2008	SA_42	SP-080845	0013	--	Add missing definitions re notifyAttributeValueChange and notifyStateChange triggering event	F	7.0.0	7.1.0
Dec 2008	SA_42	--	--	--	Upgrade to Release 8	--	7.1.0	8.0.0
Mar 2009	SA_43	SP-090207	0014	--	Indicating Self-X in create-/delete-/change-notifications	F	8.0.0	8.1.0
Sep 2009	SA_45	SP-090534	0015	--	Remove inconsistency of sourceIndicator definition at notifyStateChange	F	8.1.0	8.2.0
Dec 2009	-	-	-	-	Update to Rel-9 version	--	8.2.0	9.0.0
2011-03	-	-	-	-	Update to Rel-10 version (MCC)		9.0.0	10.0.0
2012-09	-	-	-	-	Update to Rel-11 version (MCC)		10.0.0	11.0.0
2012-12	SA_58	SP-120783	0017	-	Align usage of SupportIOC with repertoire and TS 32.152	F	11.0.0	11.1.0
2014-10	-	-	-	-	Update to Rel-12 version (MCC)		11.1.0	12.0.0
2016-01	-	-	-	-	Update to Rel-13 version (MCC)		12.0.0	13.0.0
2017-04	SA#75	-	-	-	Promotion to Release 14 without technical change		13.0.0	14.0.0



---

# History

<b>Document history</b>		
V14.0.0	May 2017	Publication