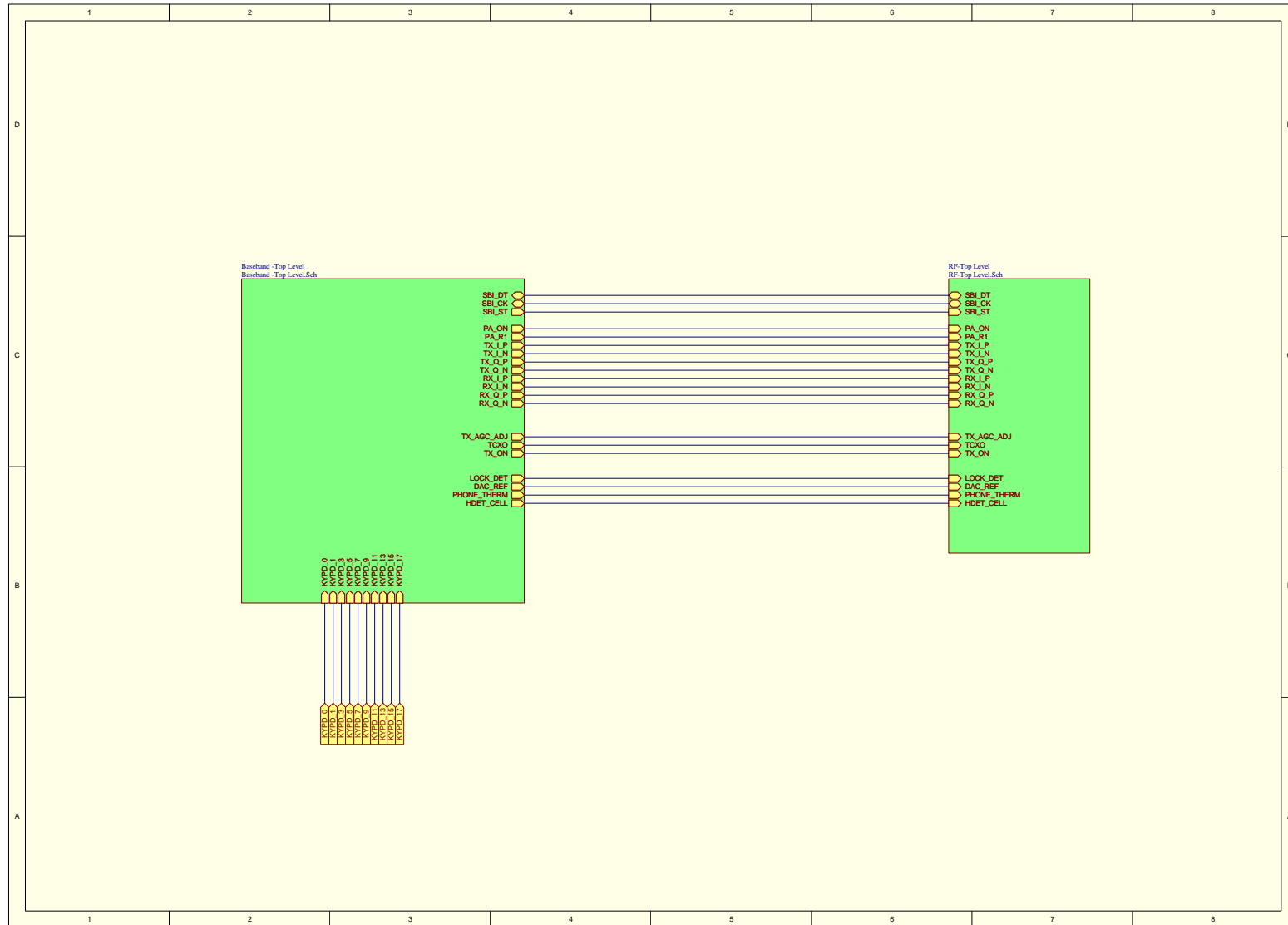
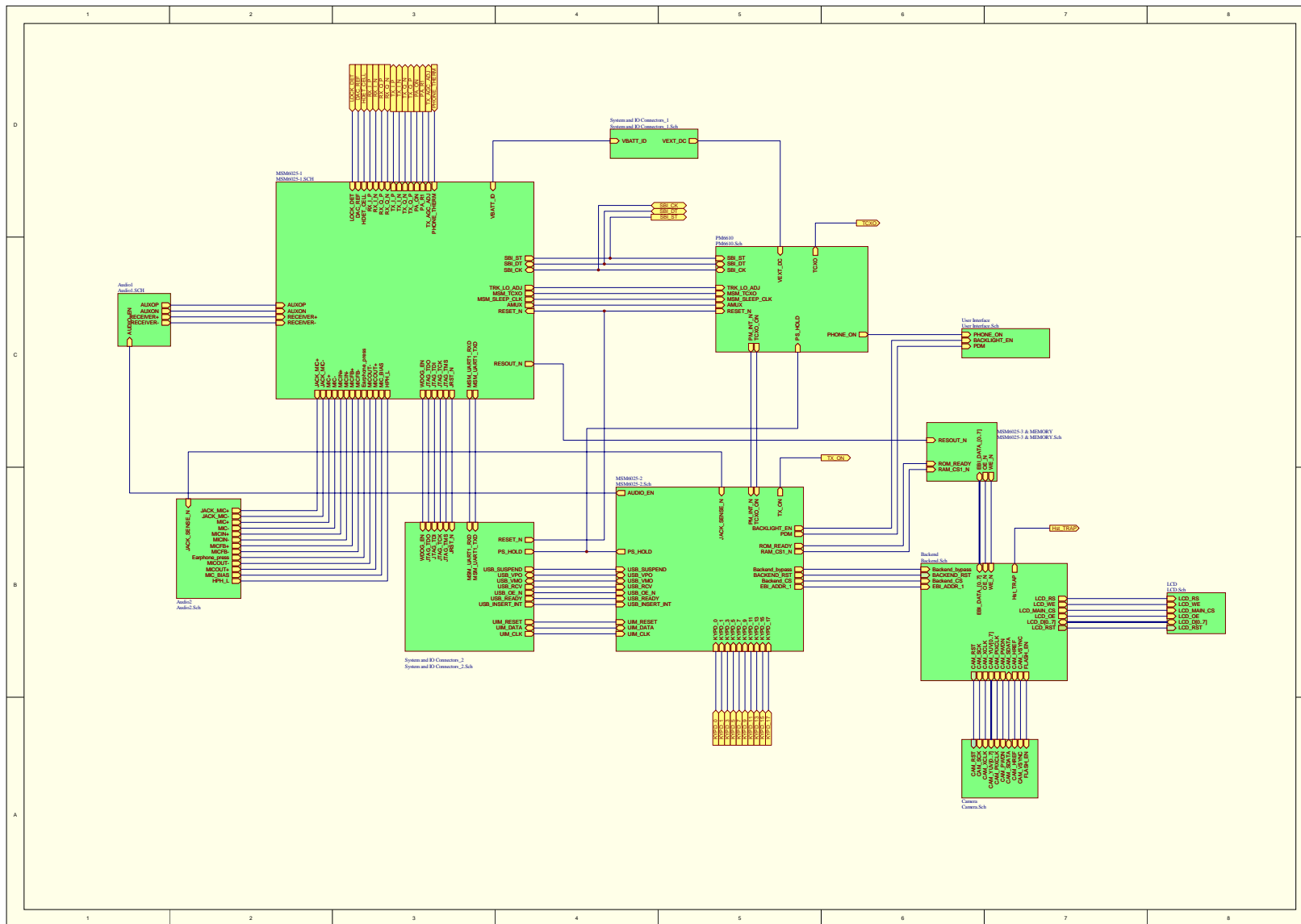


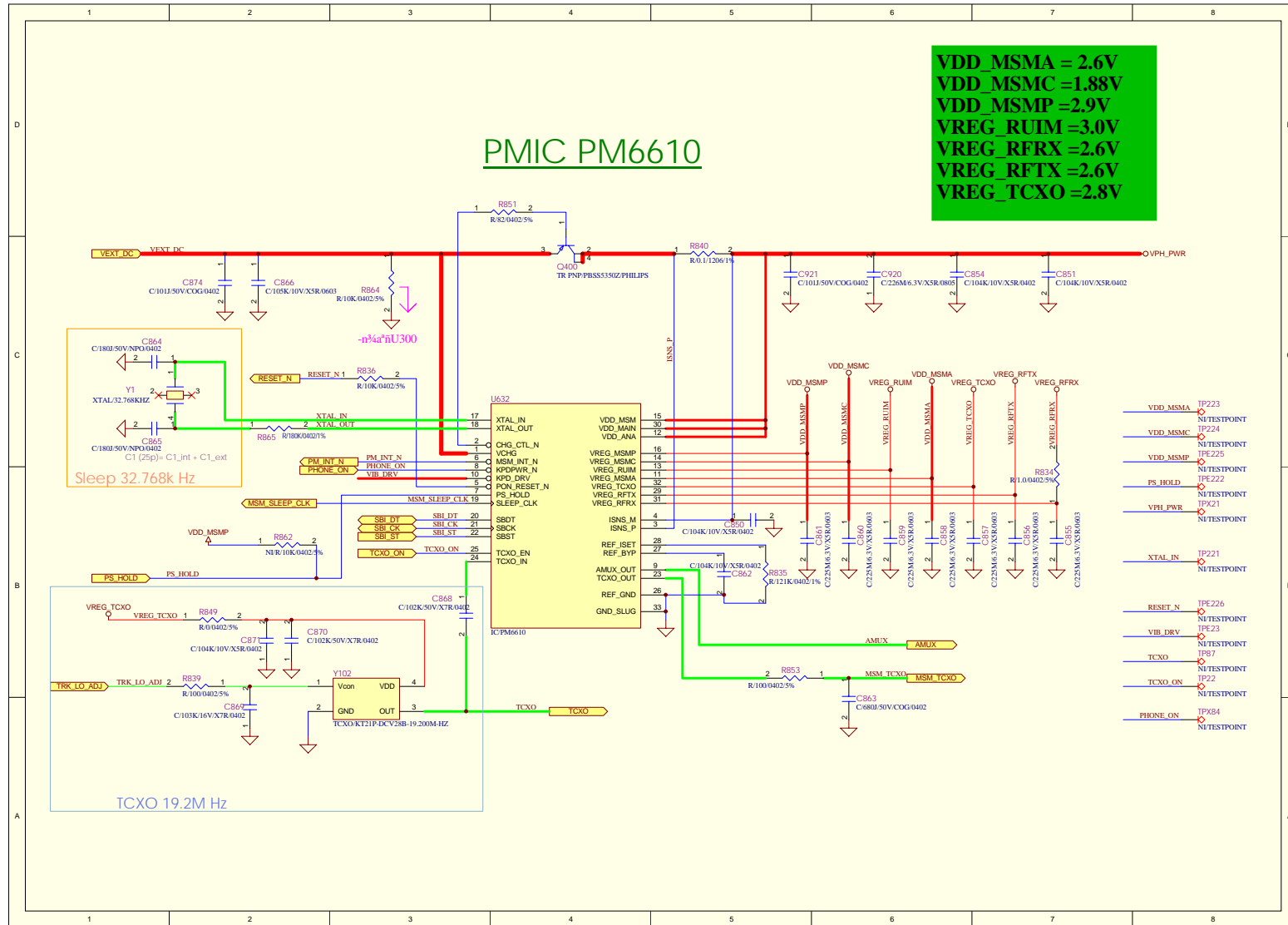
### Main PCB Top Level



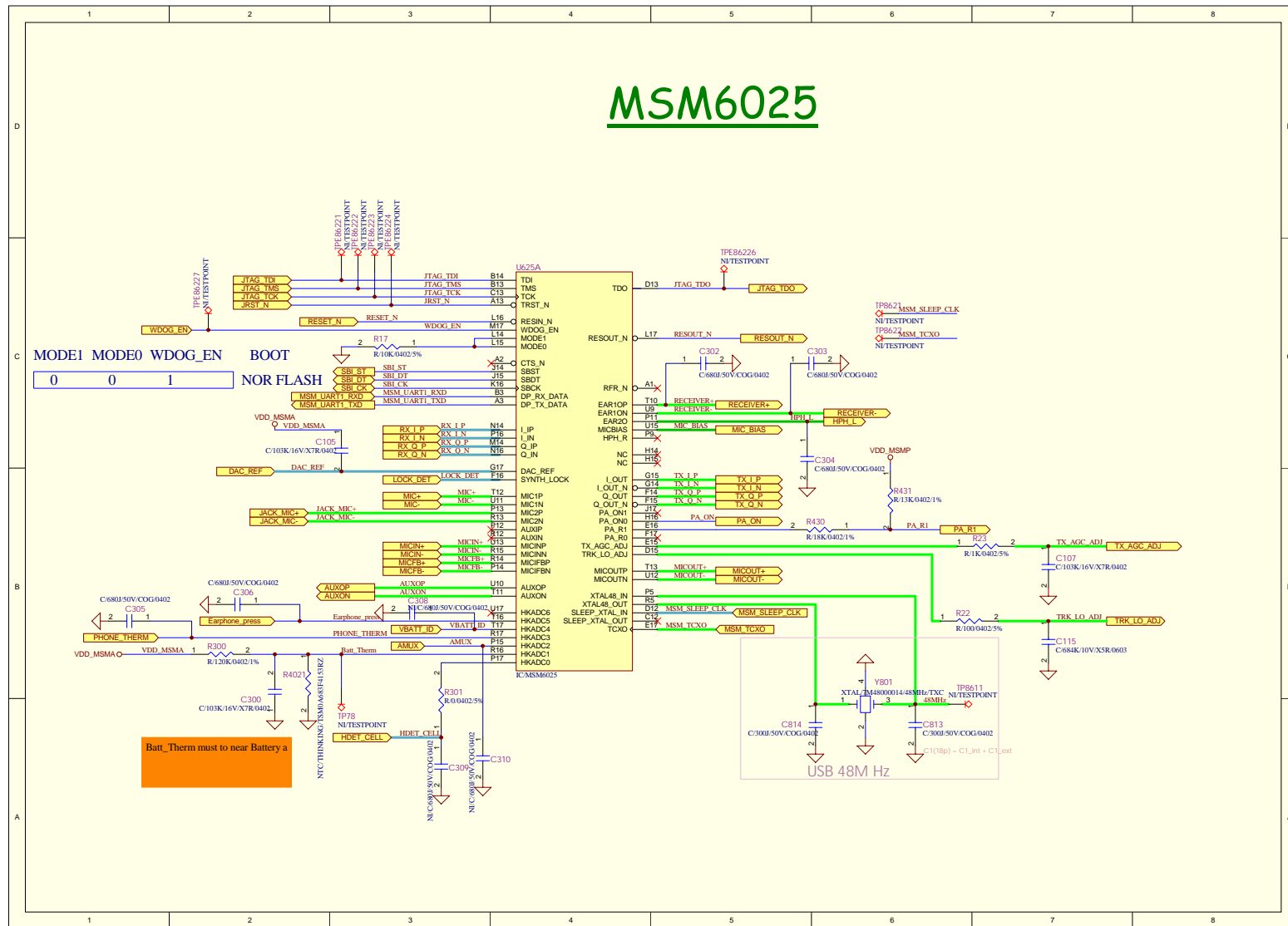
### Baseband Top Level



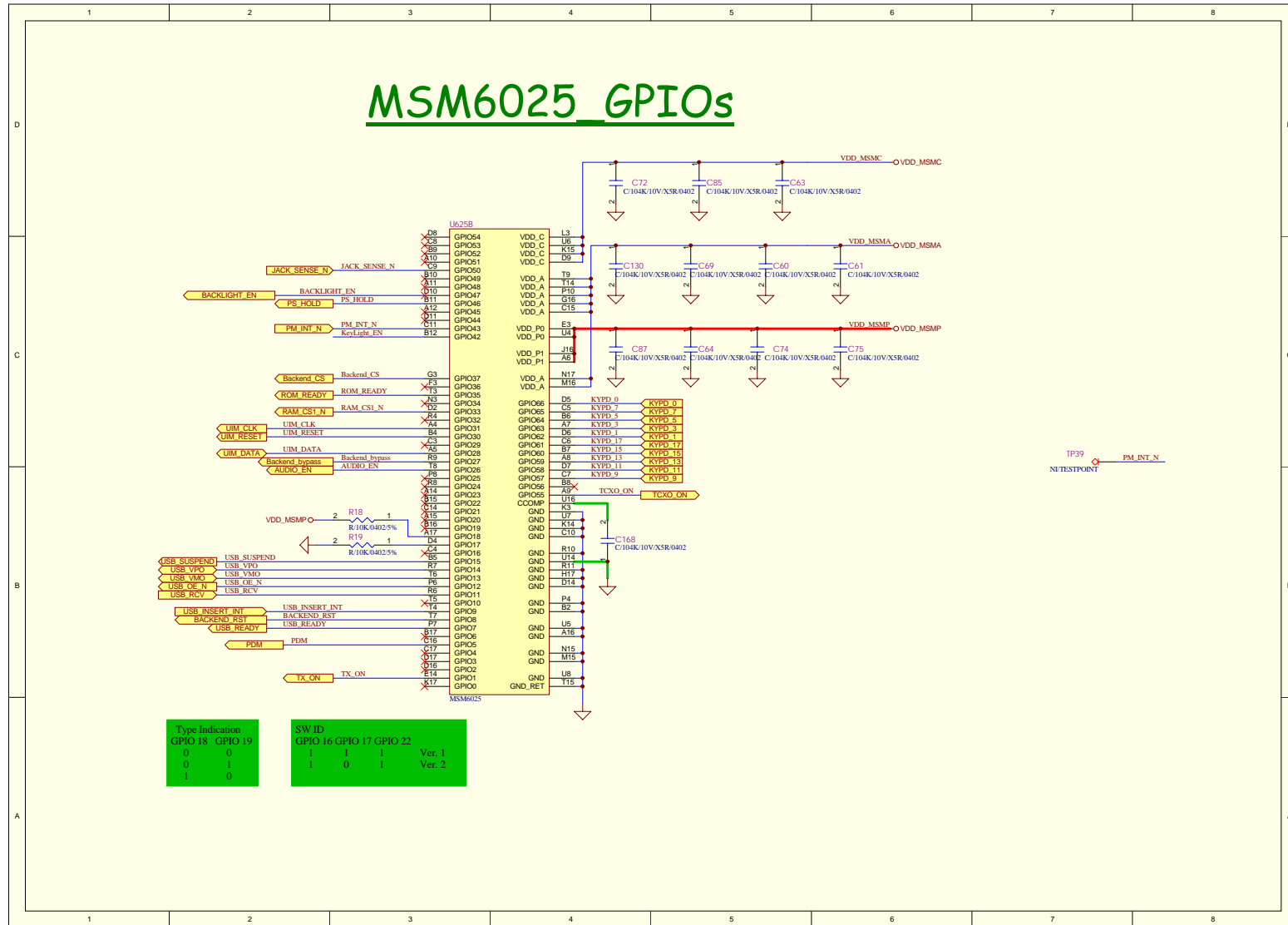
# PM6610



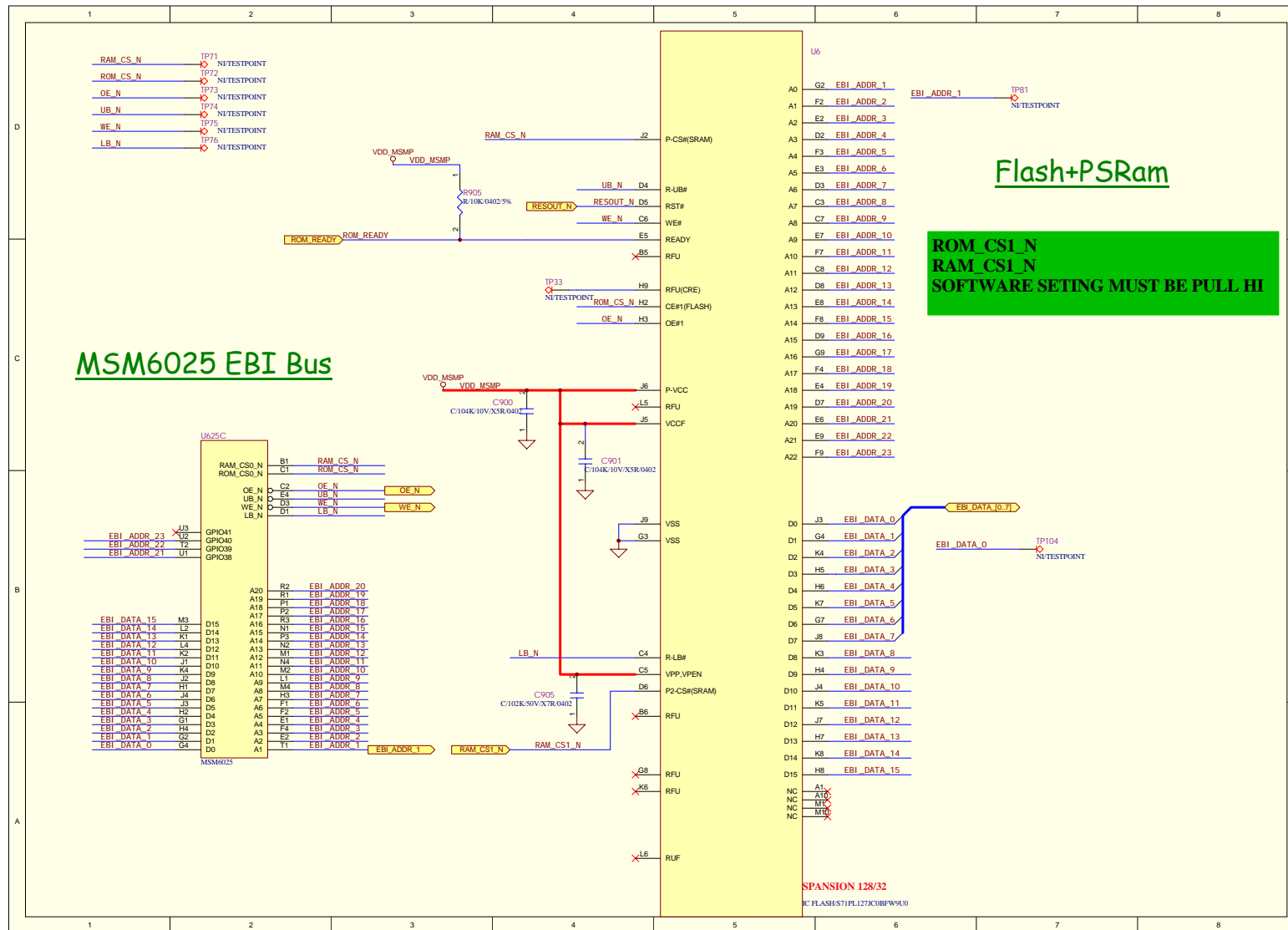
MSM6025-1



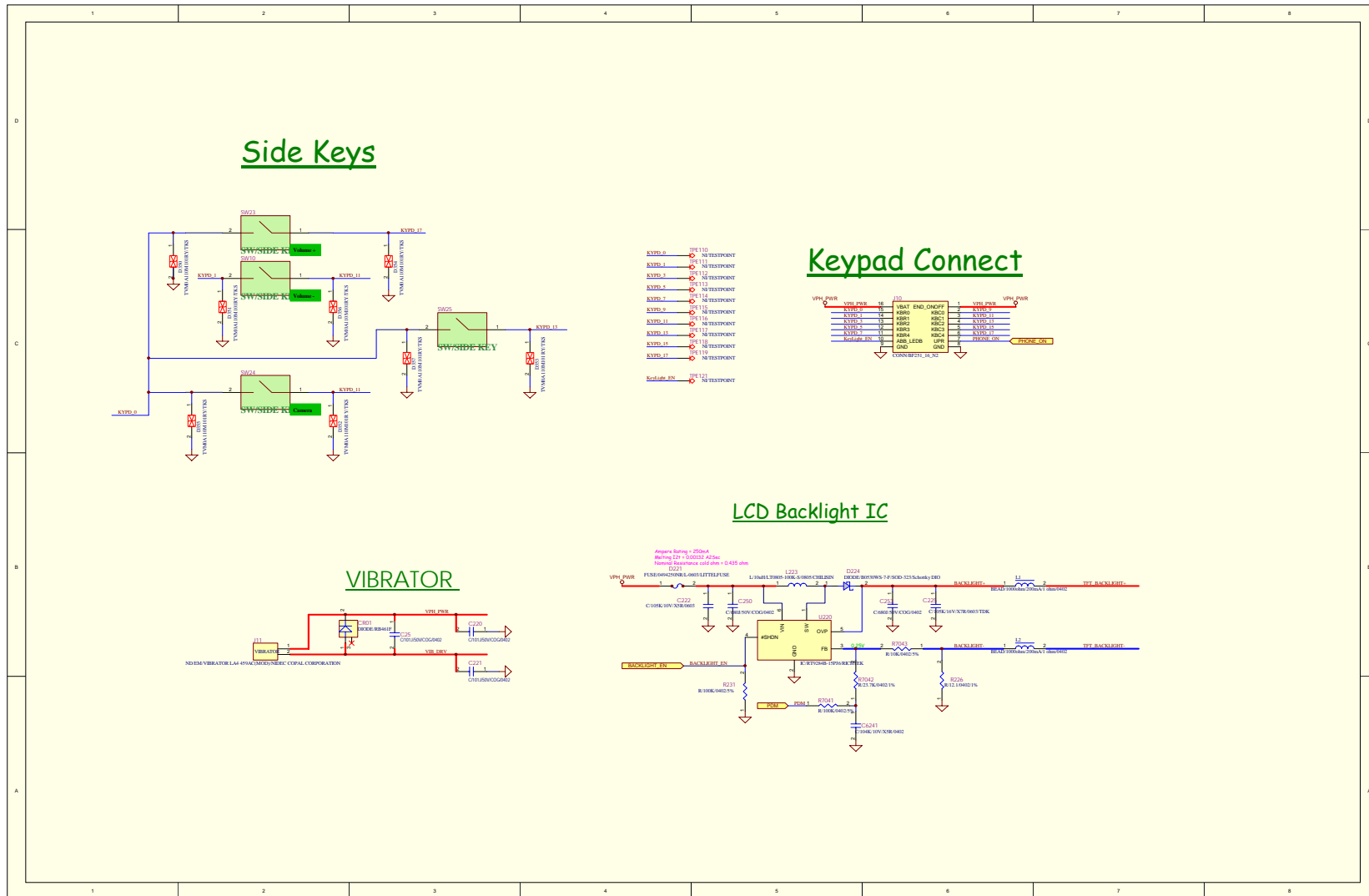
### MSM6025-2



# Memory



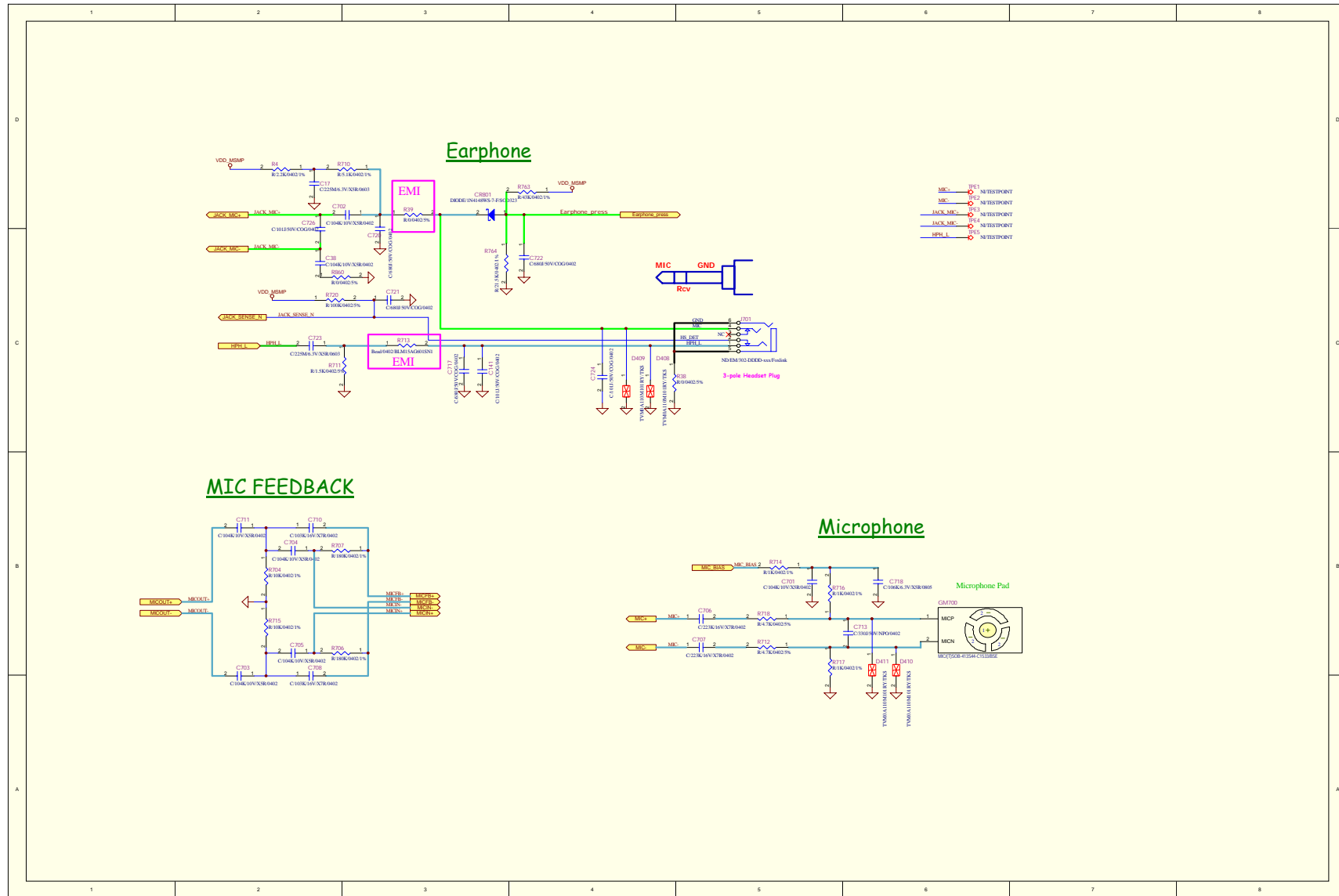
UI



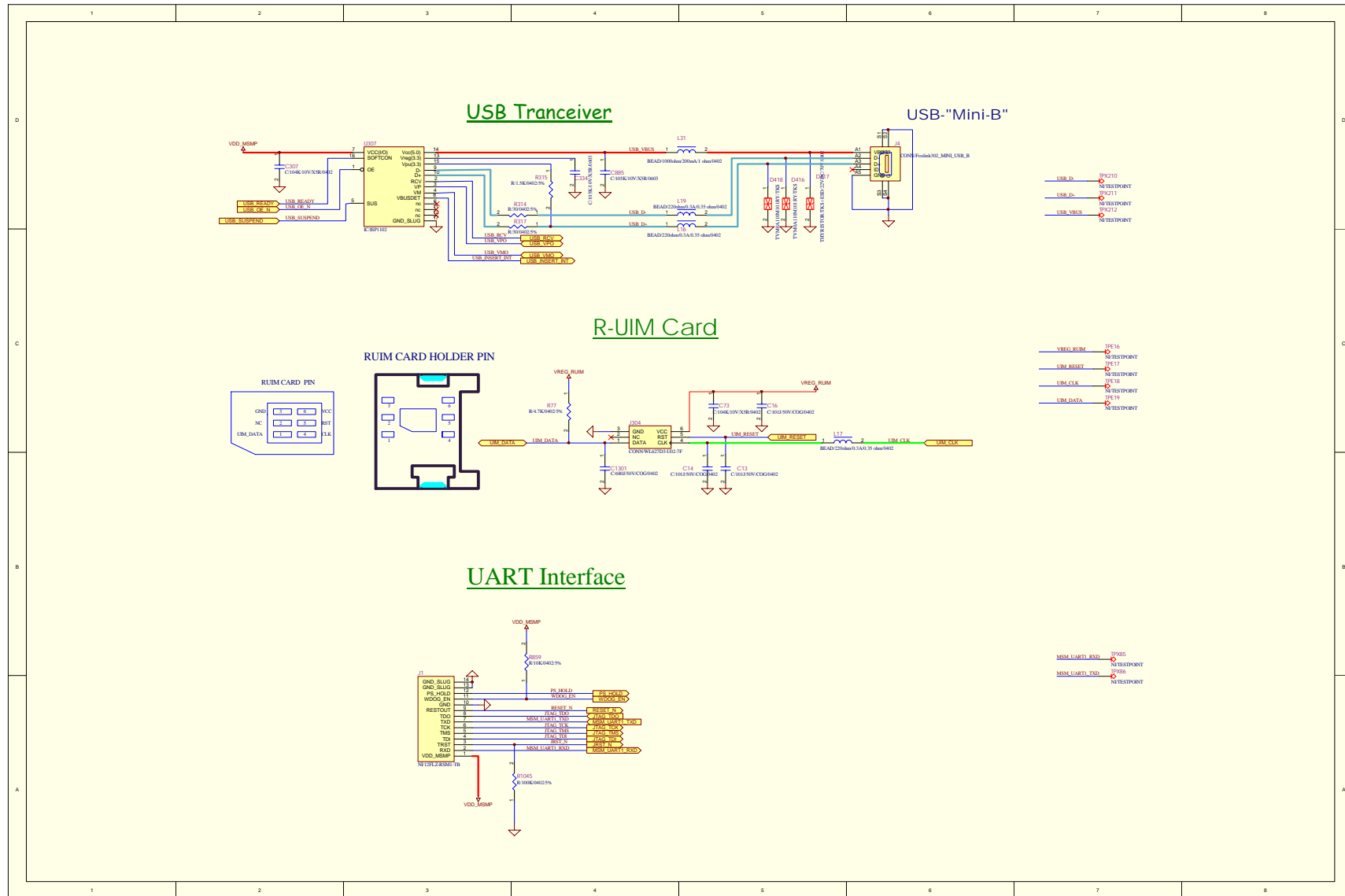




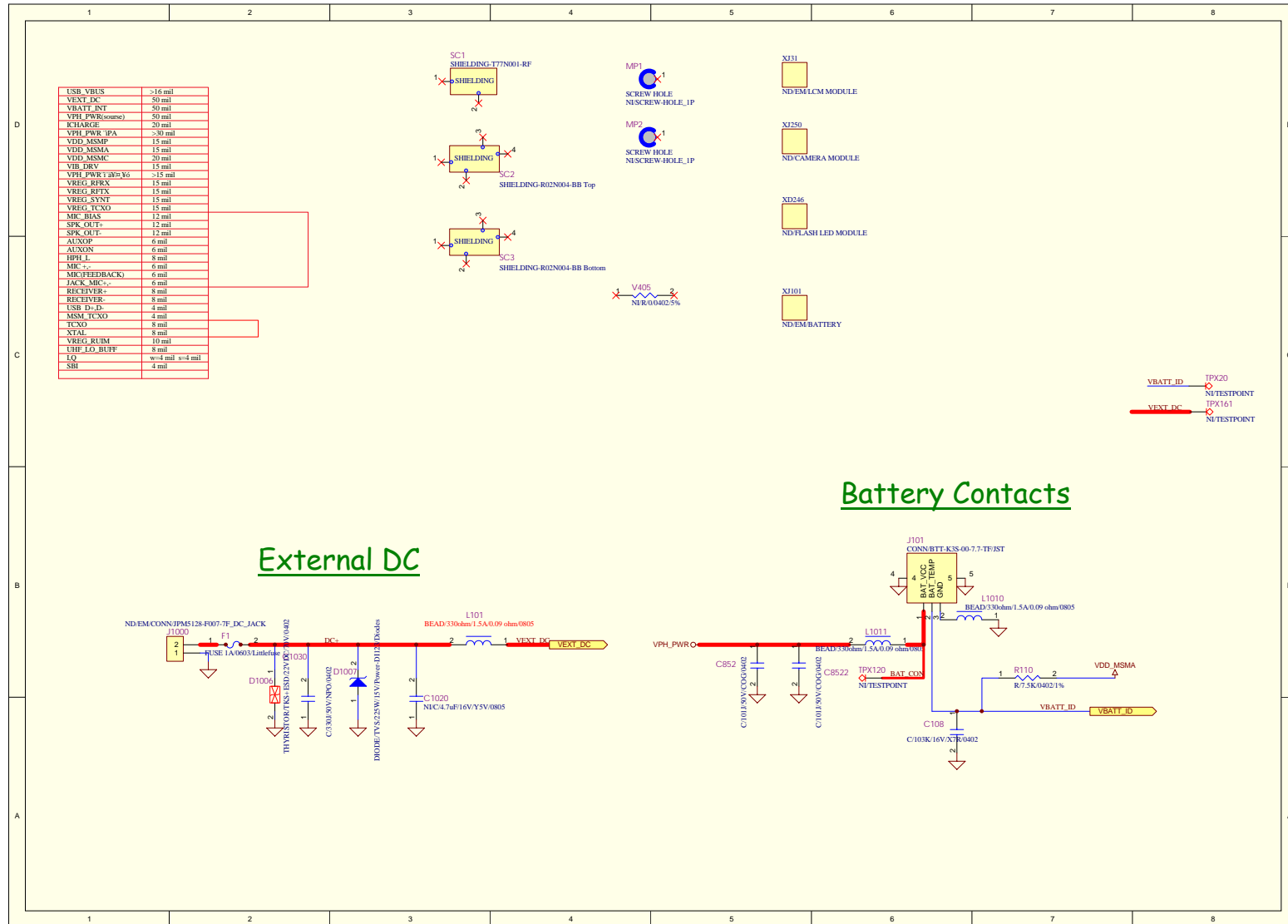
### Microphone and Earphone Jack



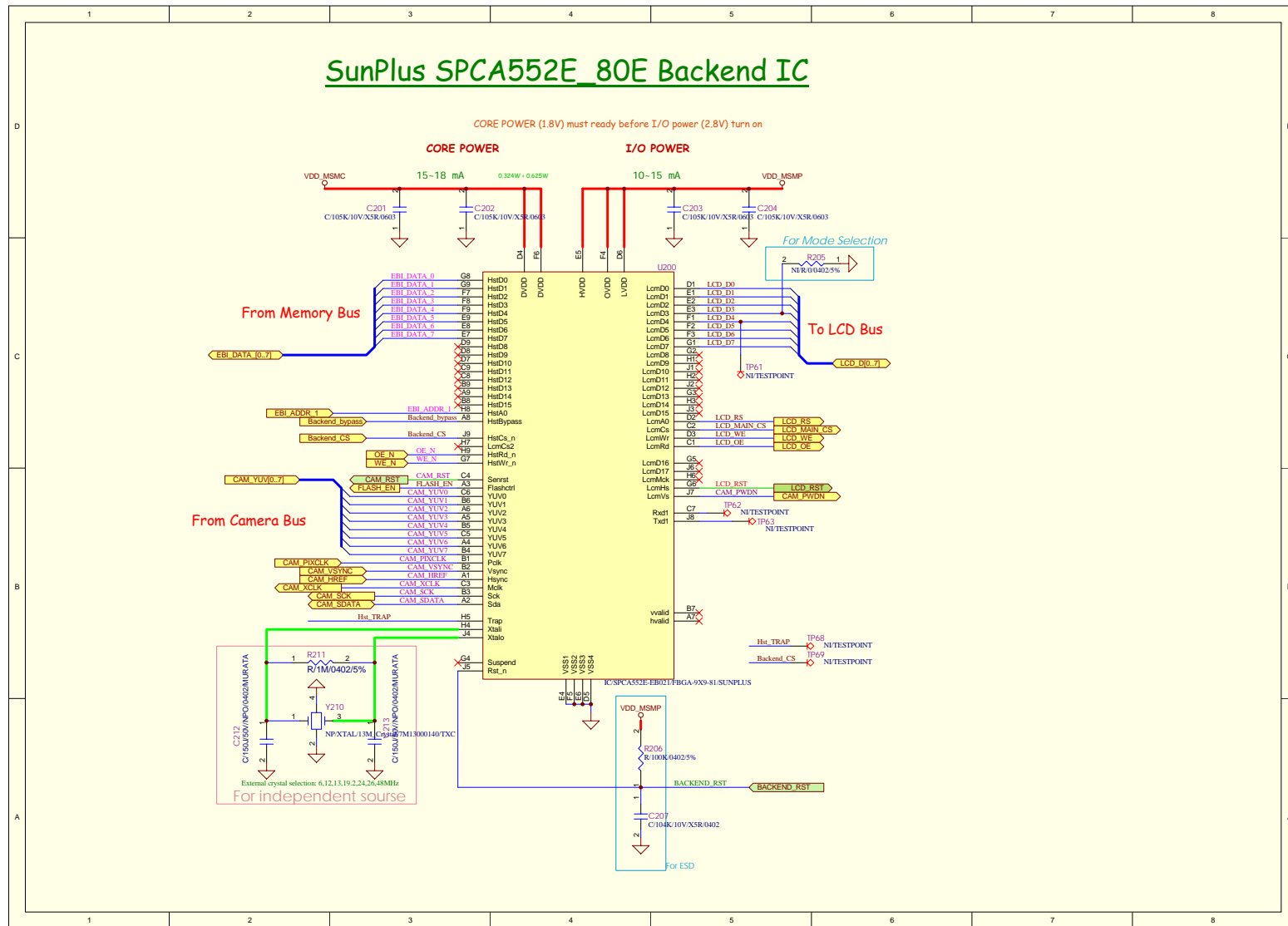
# RUIM, JTAG and USB Interface



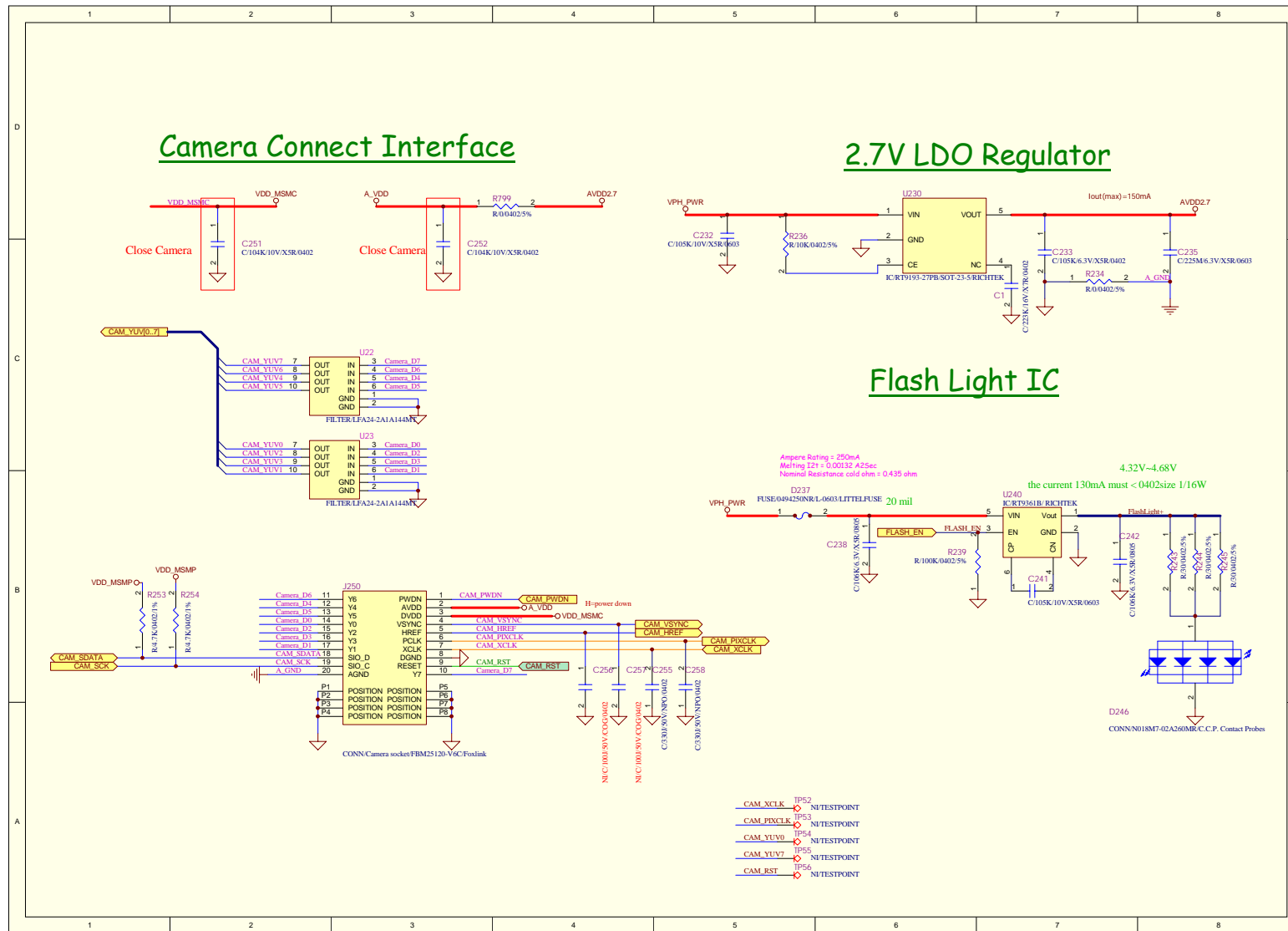
### Power Interface



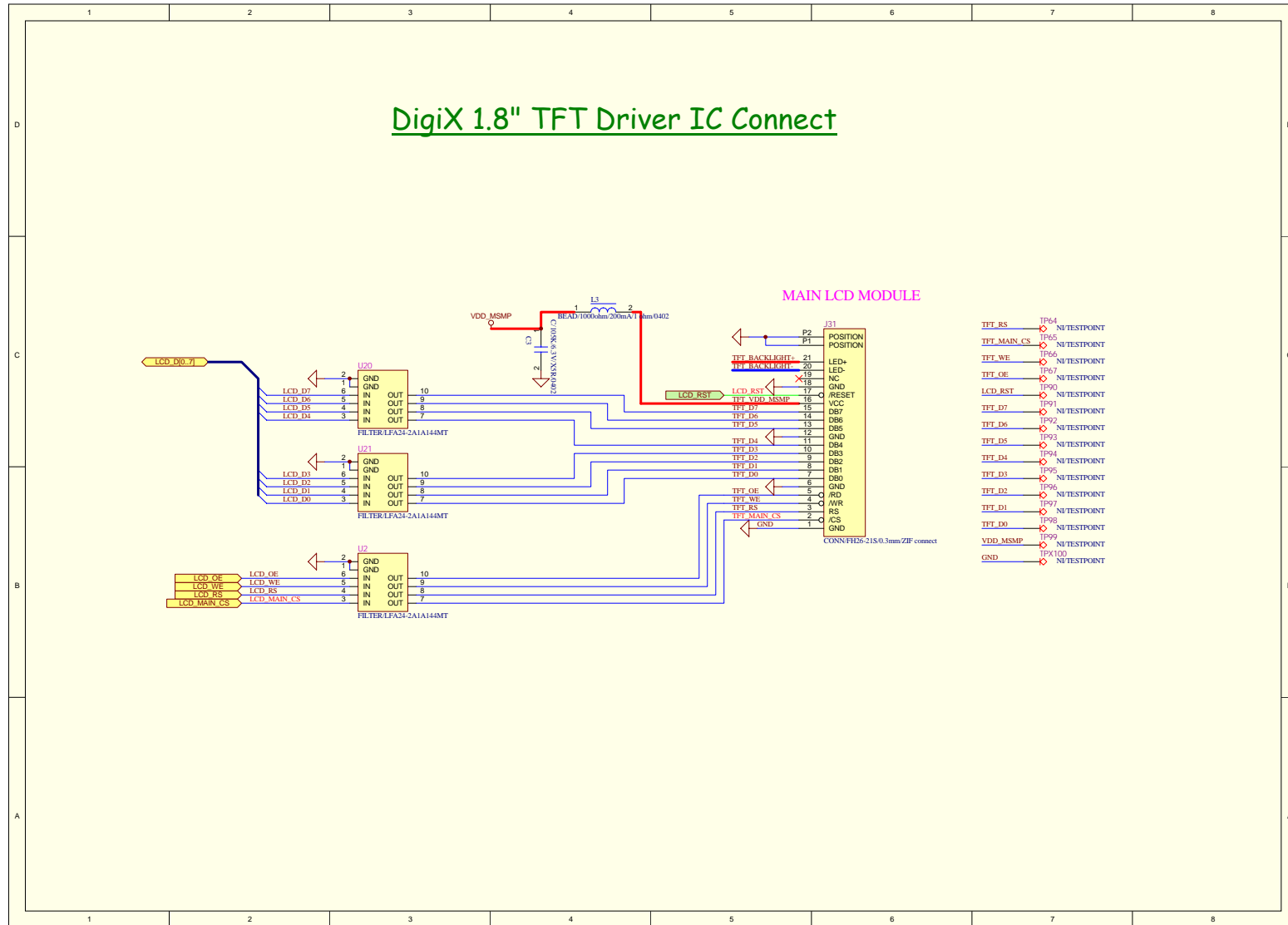
## Backend IC



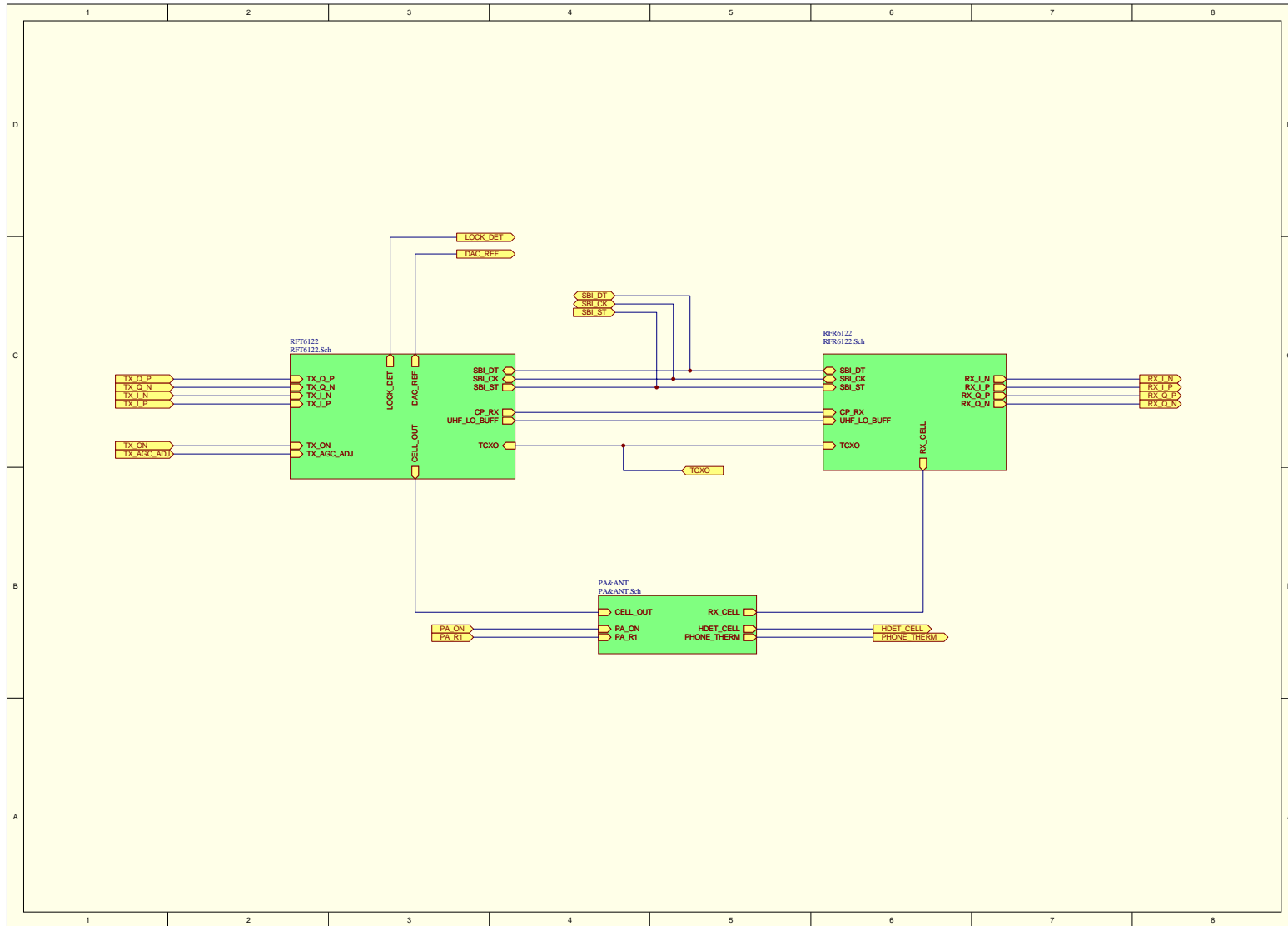
### Camera Connector



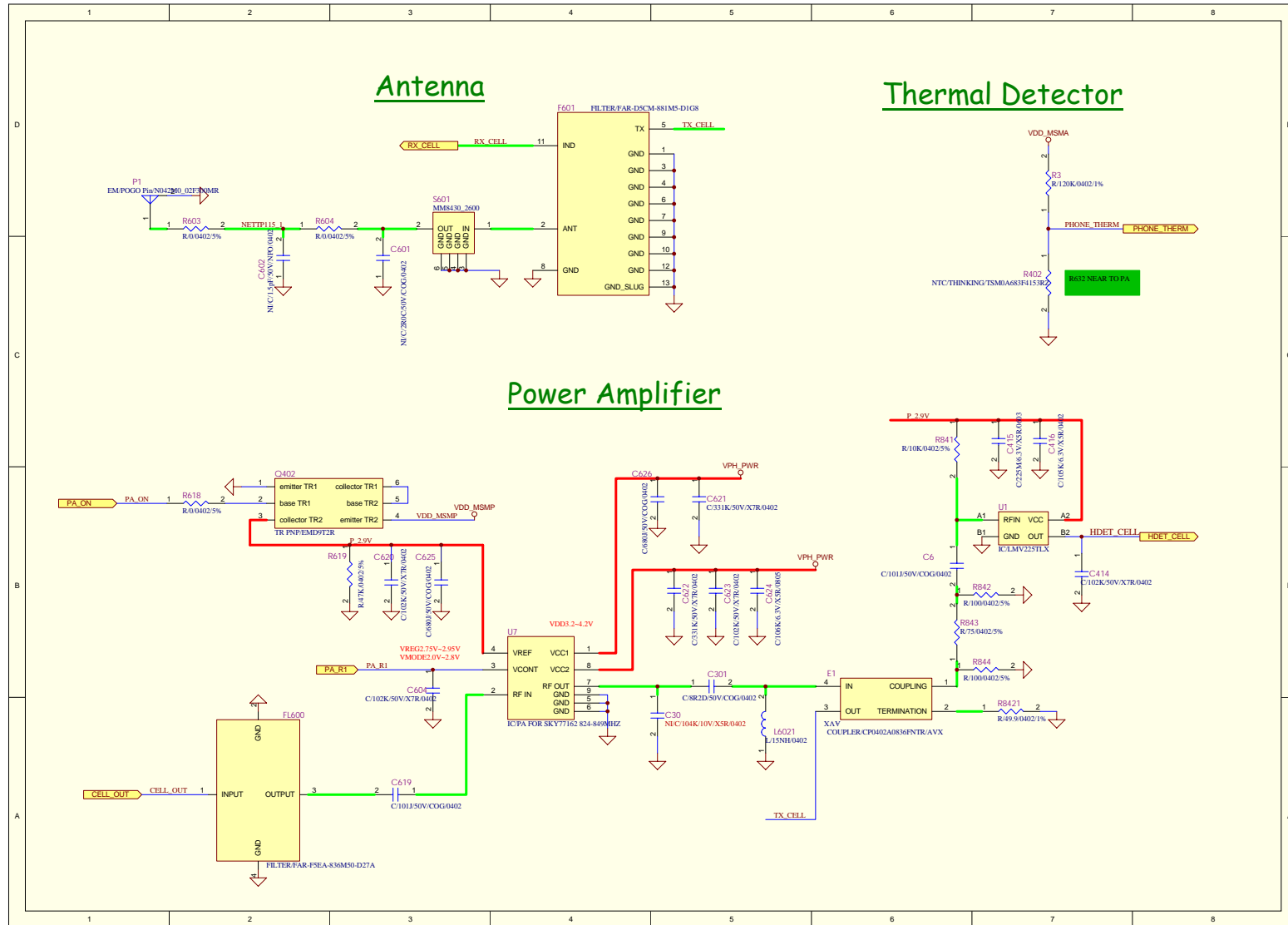
### LCD Connector



### RF Top Level

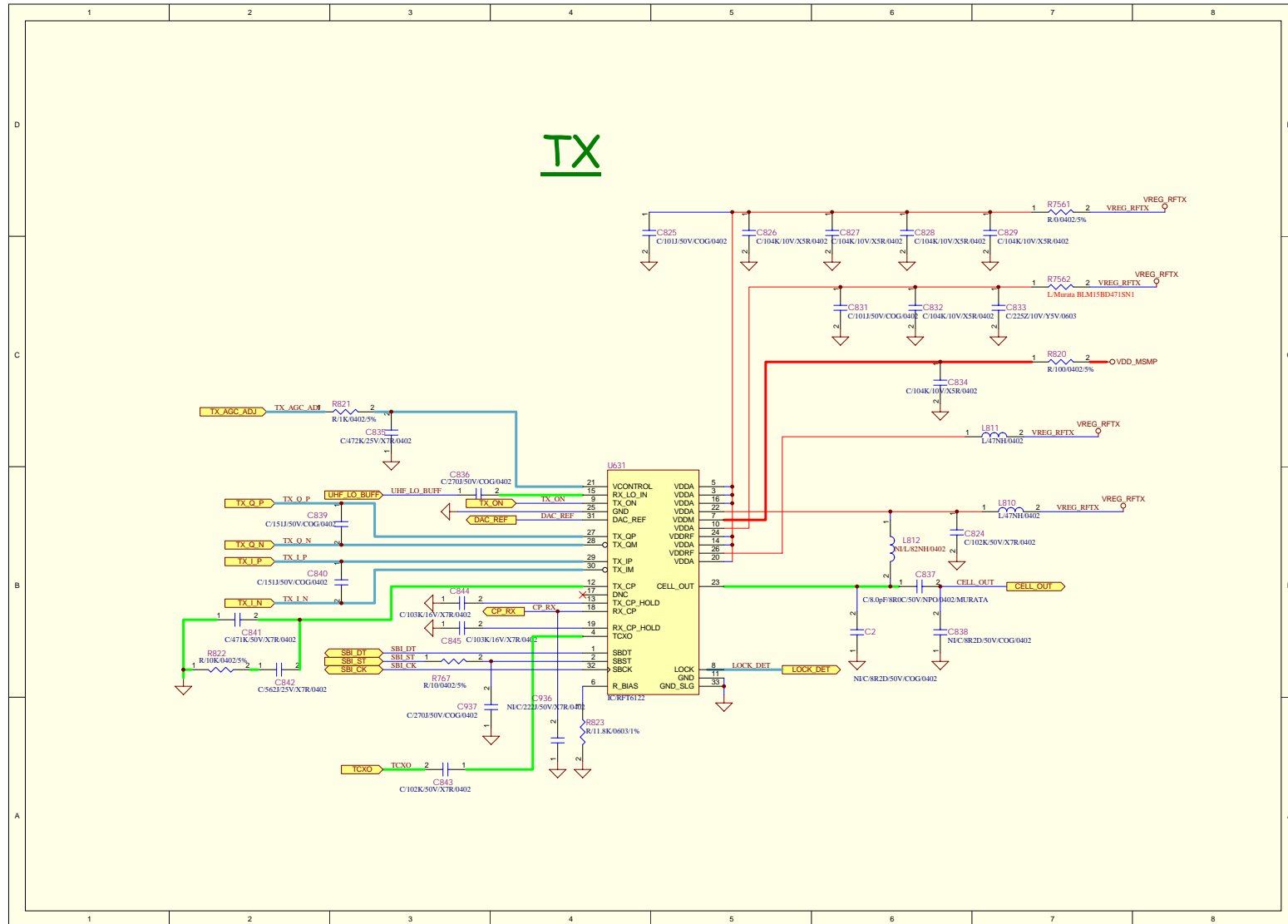


### PA and ANT

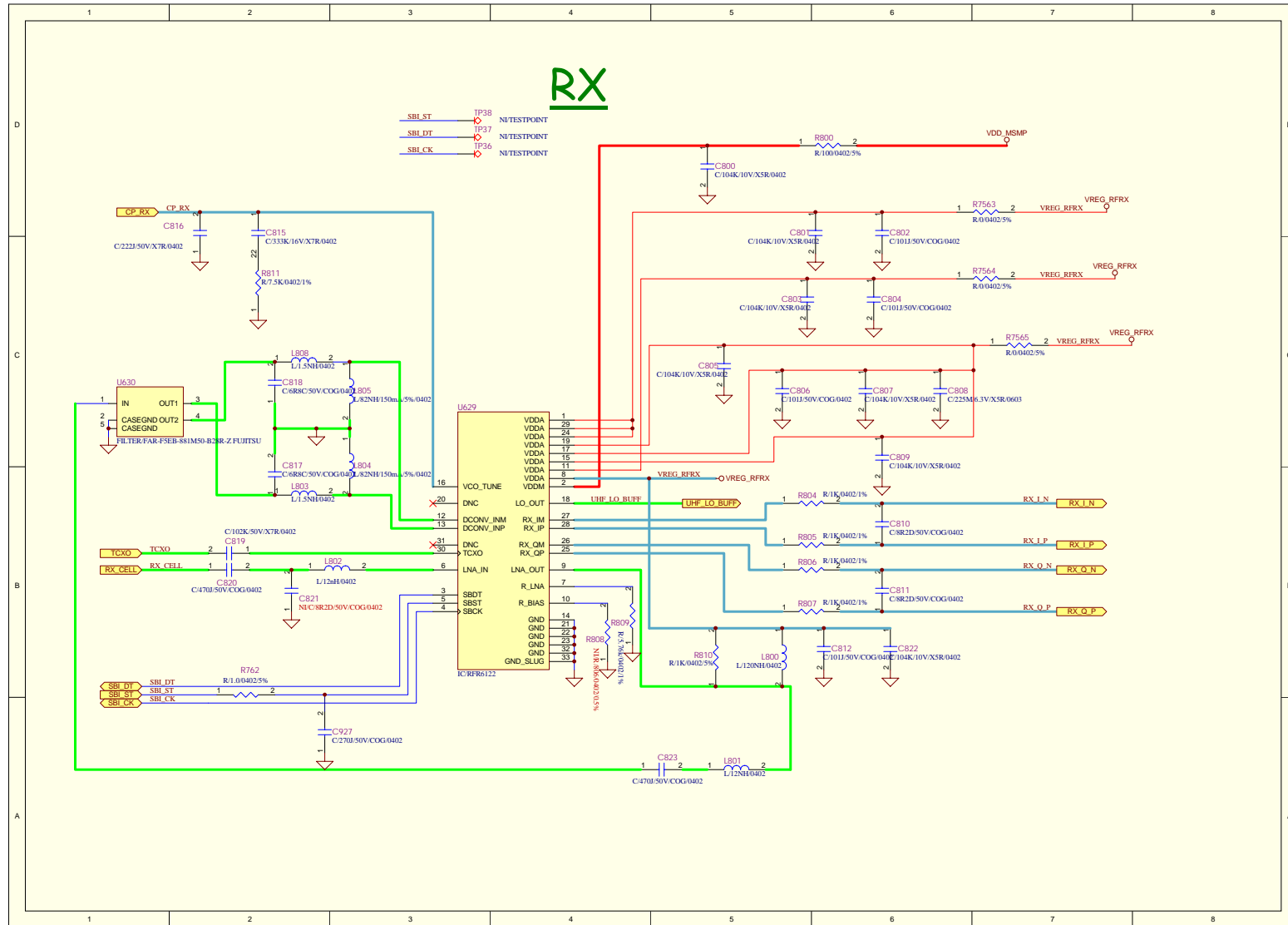




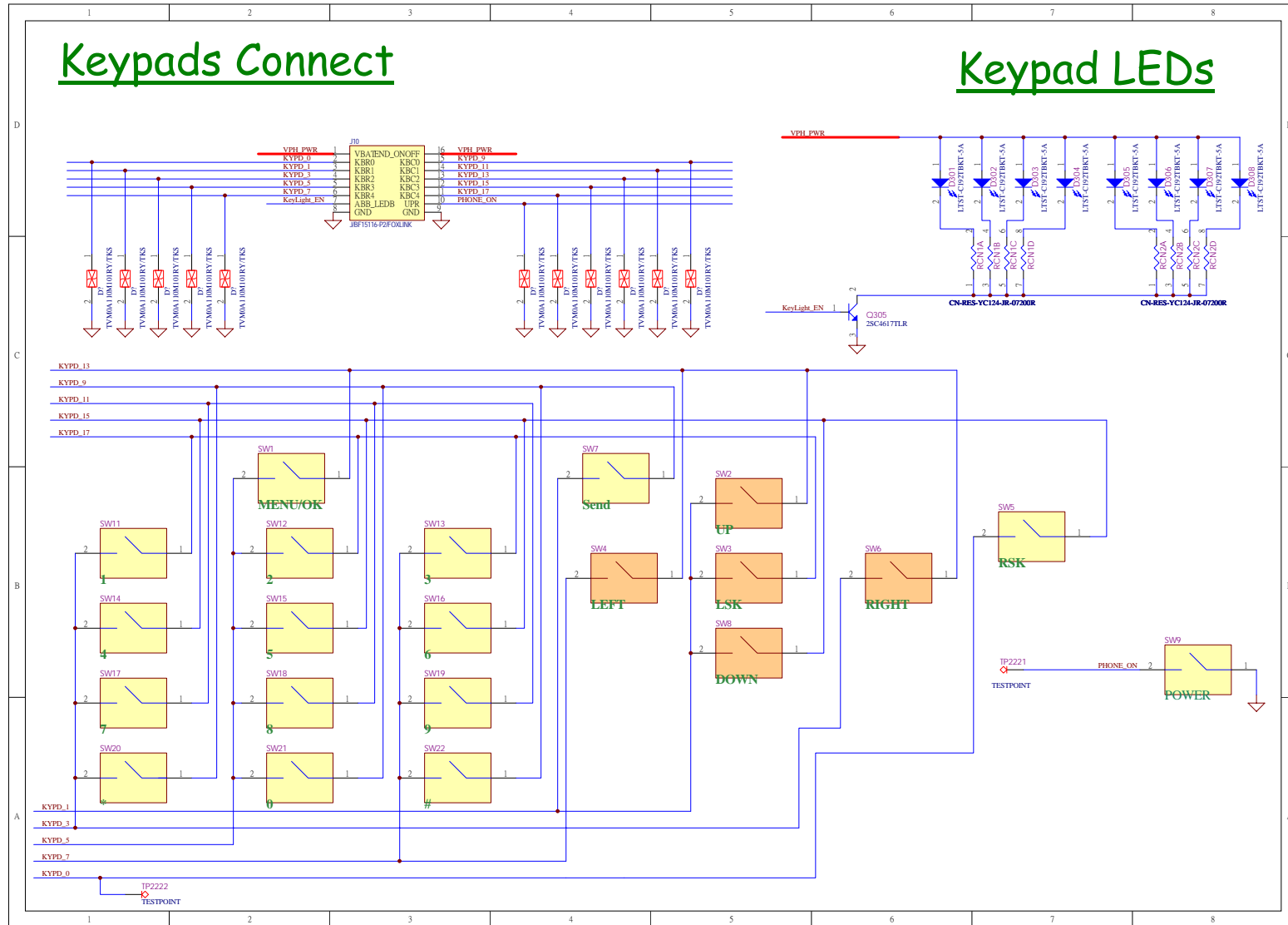
# RFT6122



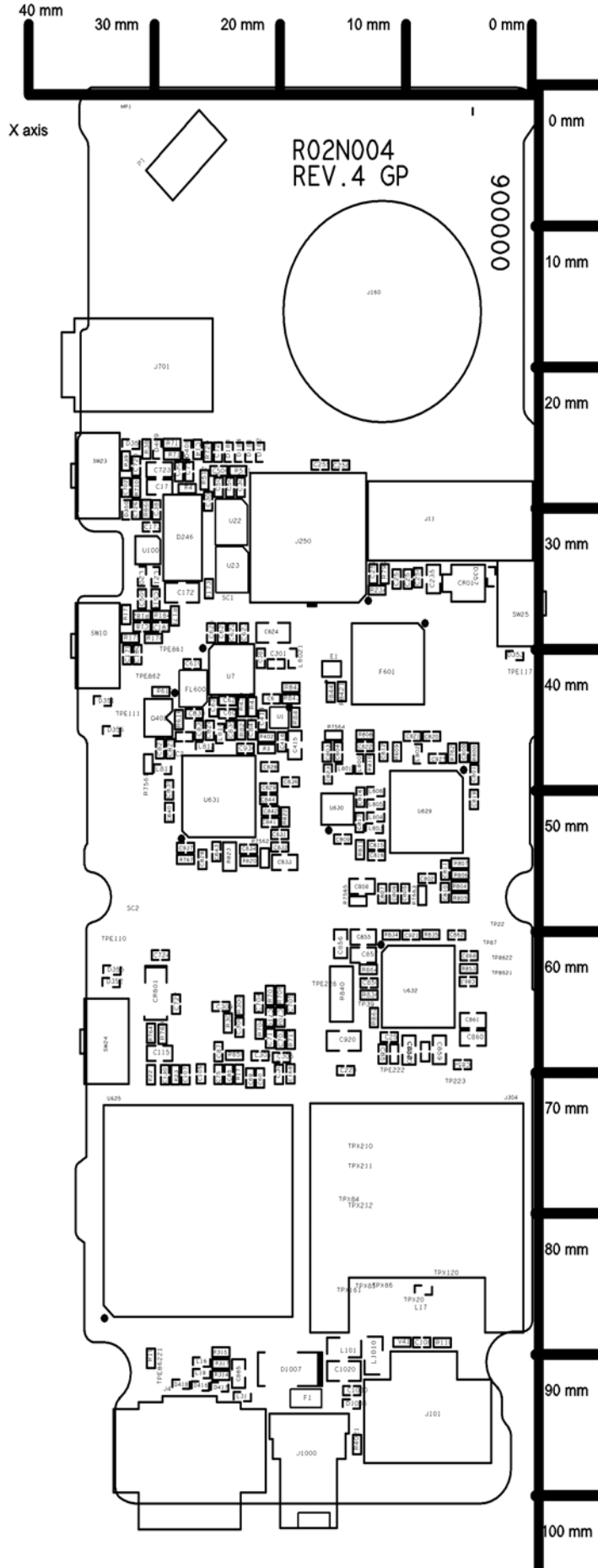
# RFR6122



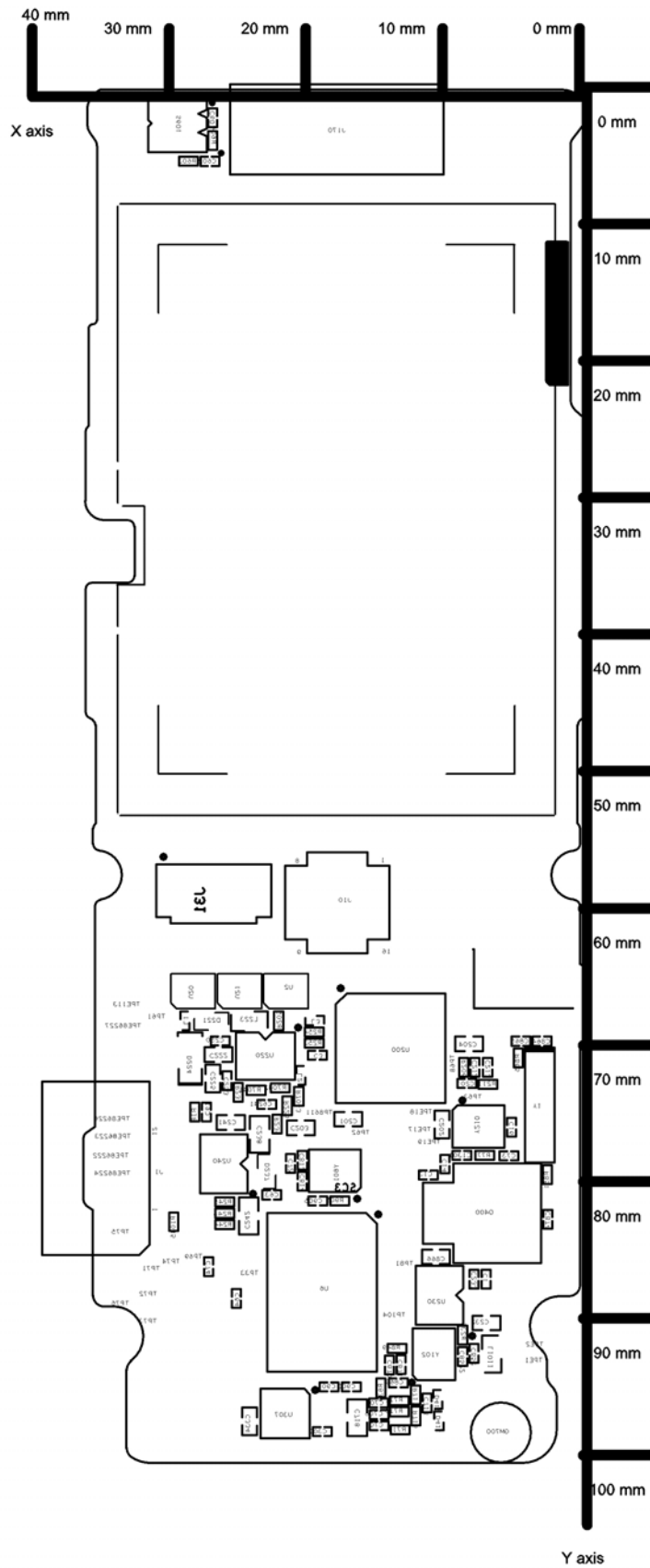
### Keypad



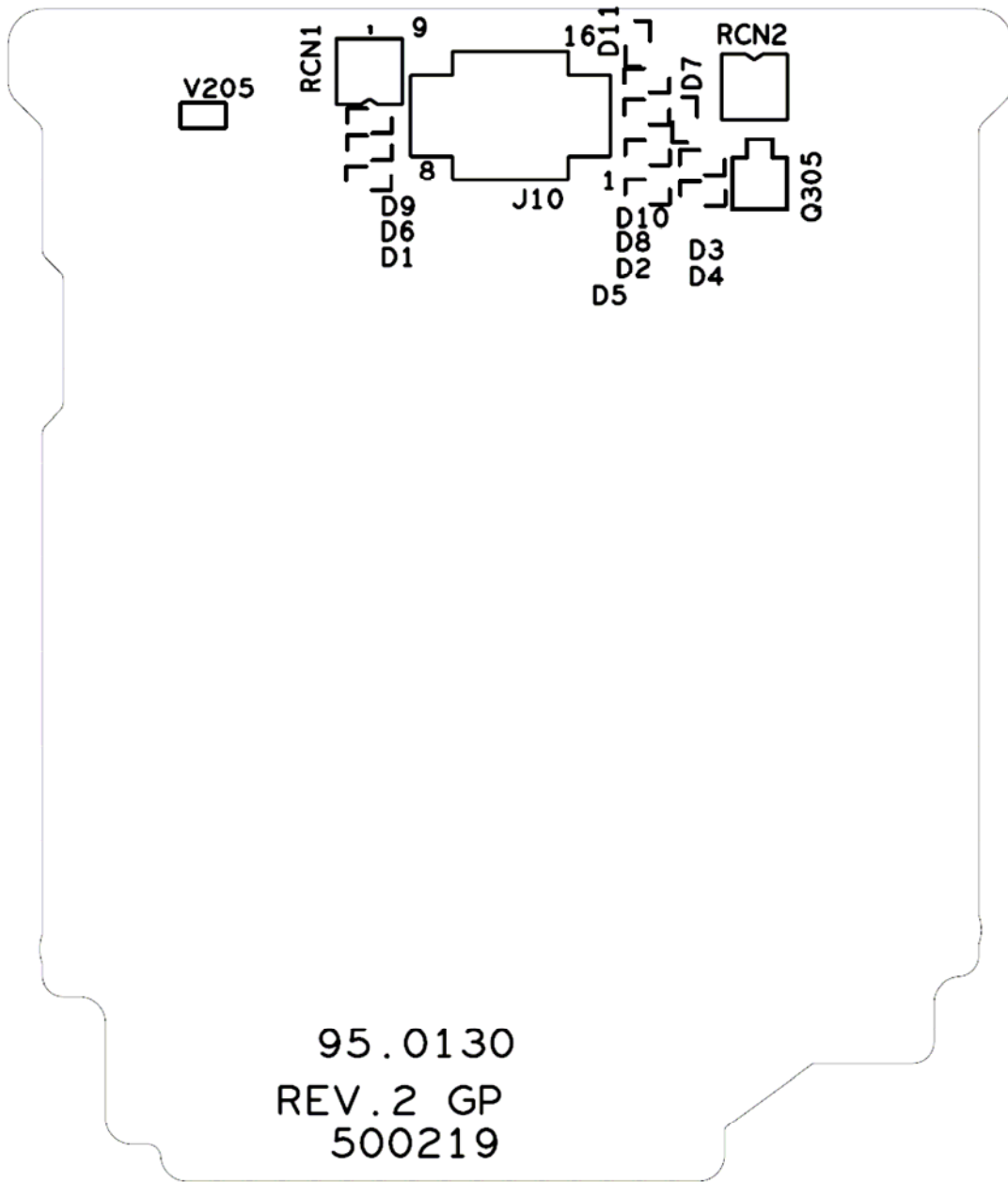
## **6088 Main PCB Component Layout –Top**



### 6088 Main PCB Component Layout - Bottom



### Keypad Layout – Top



### Keypad Layout – Bottom

