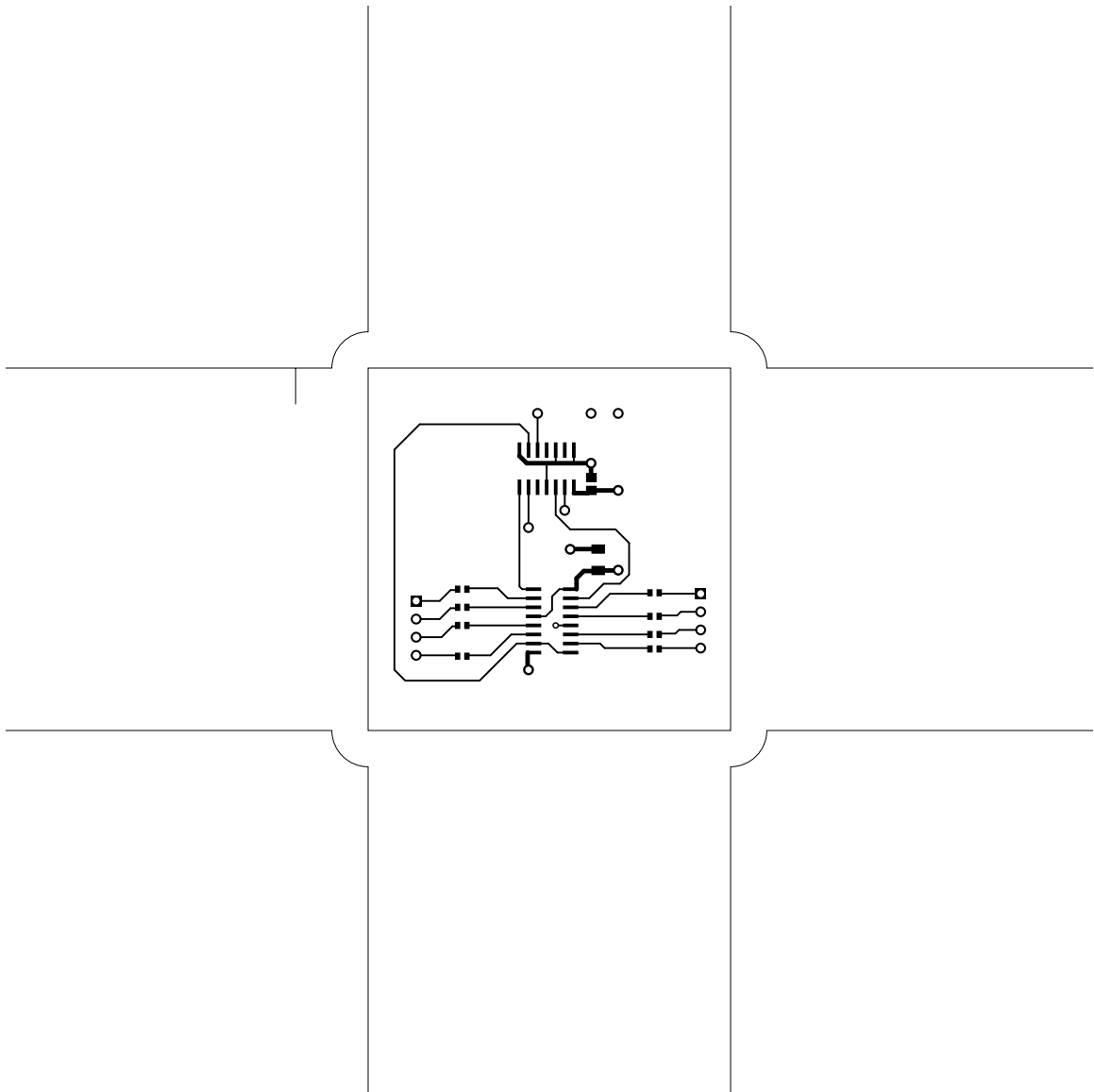
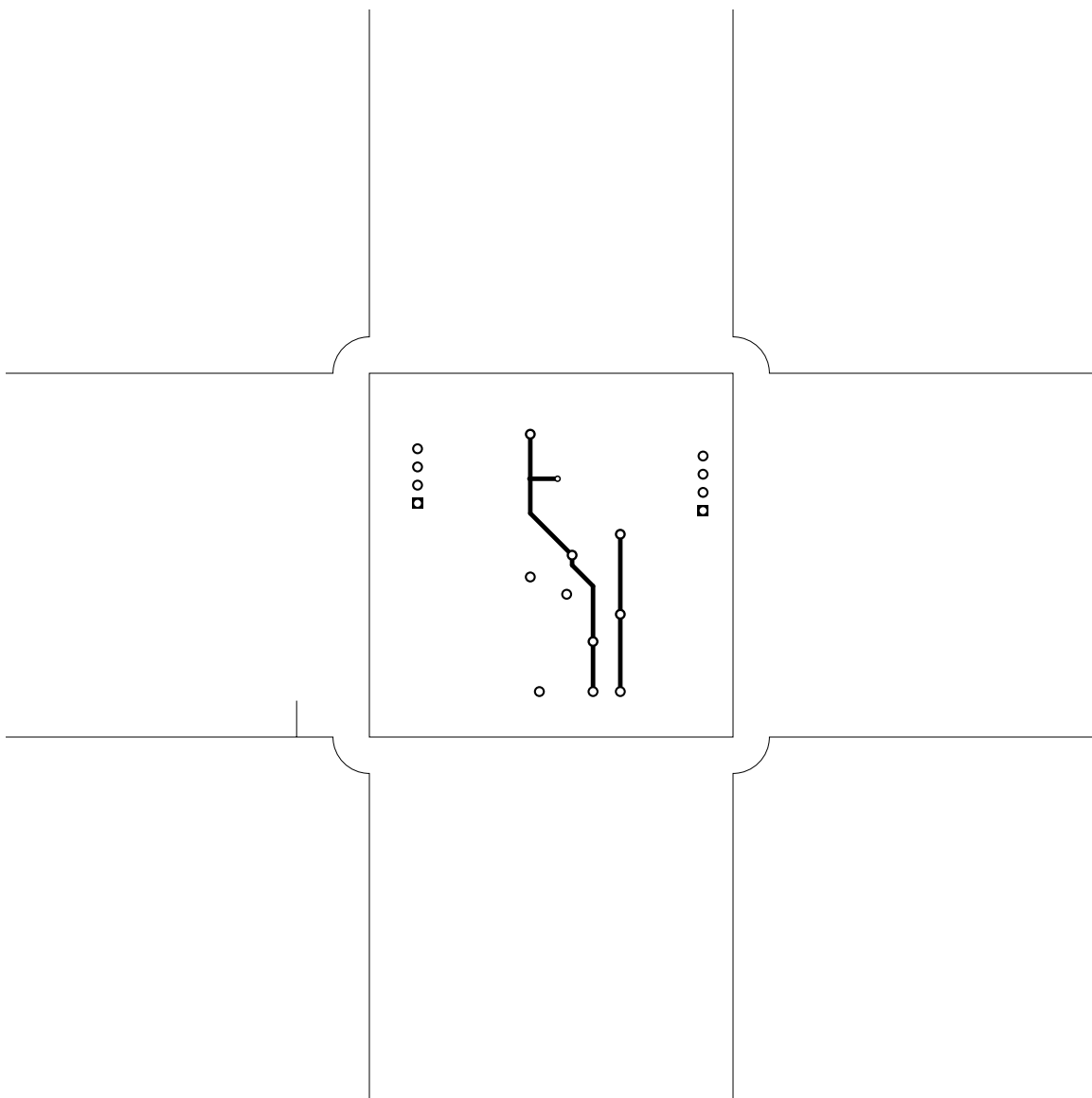
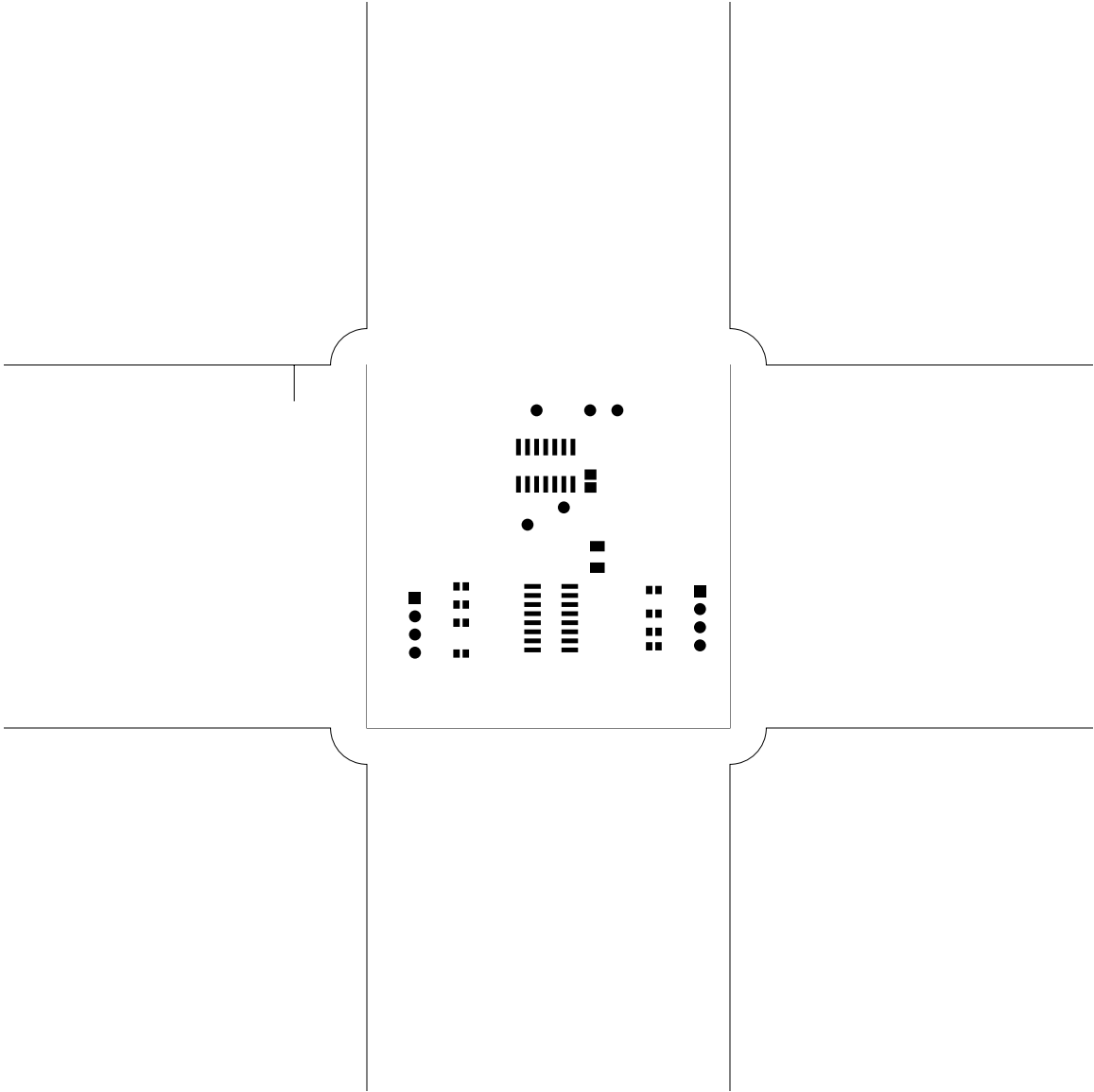
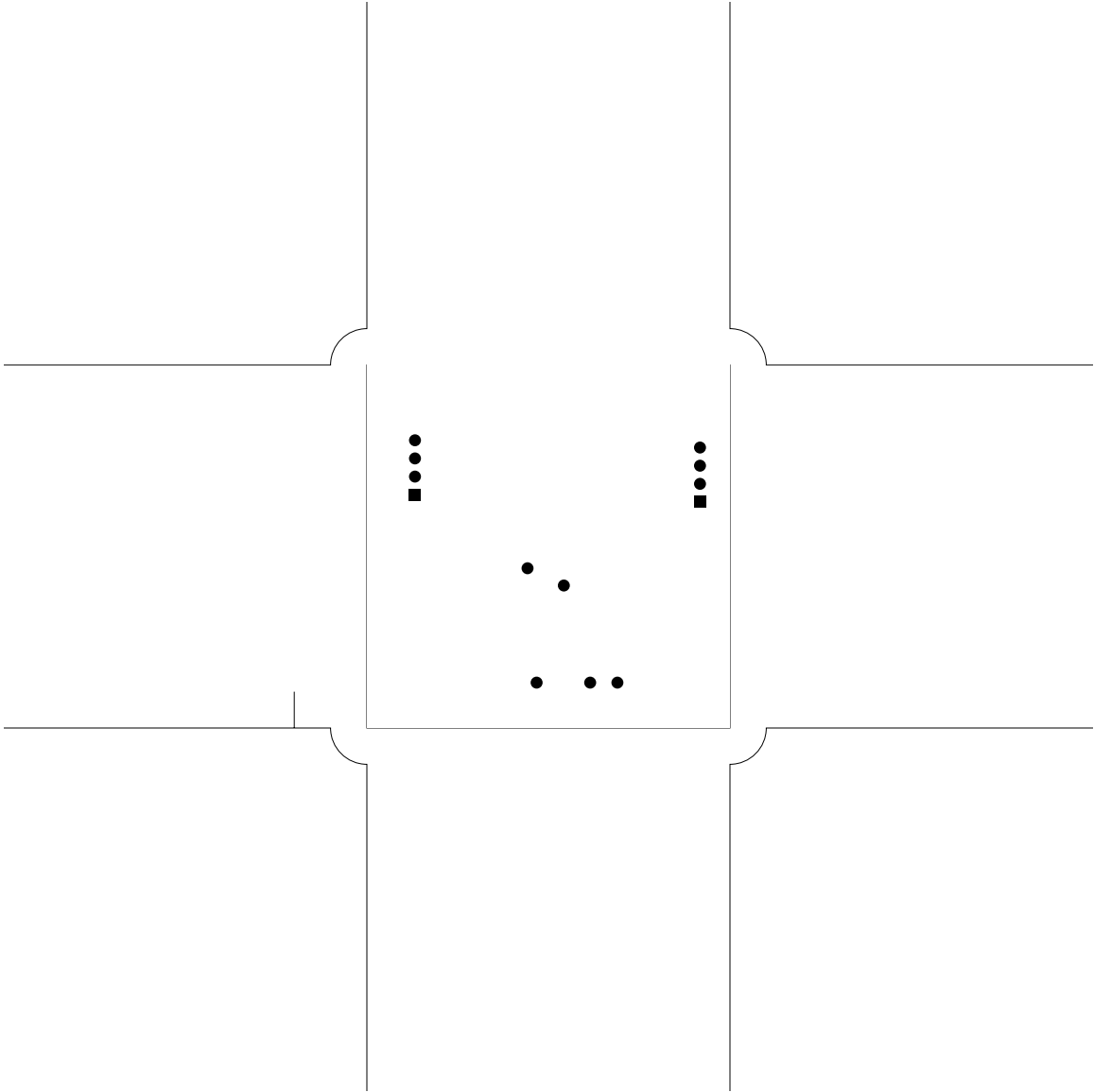


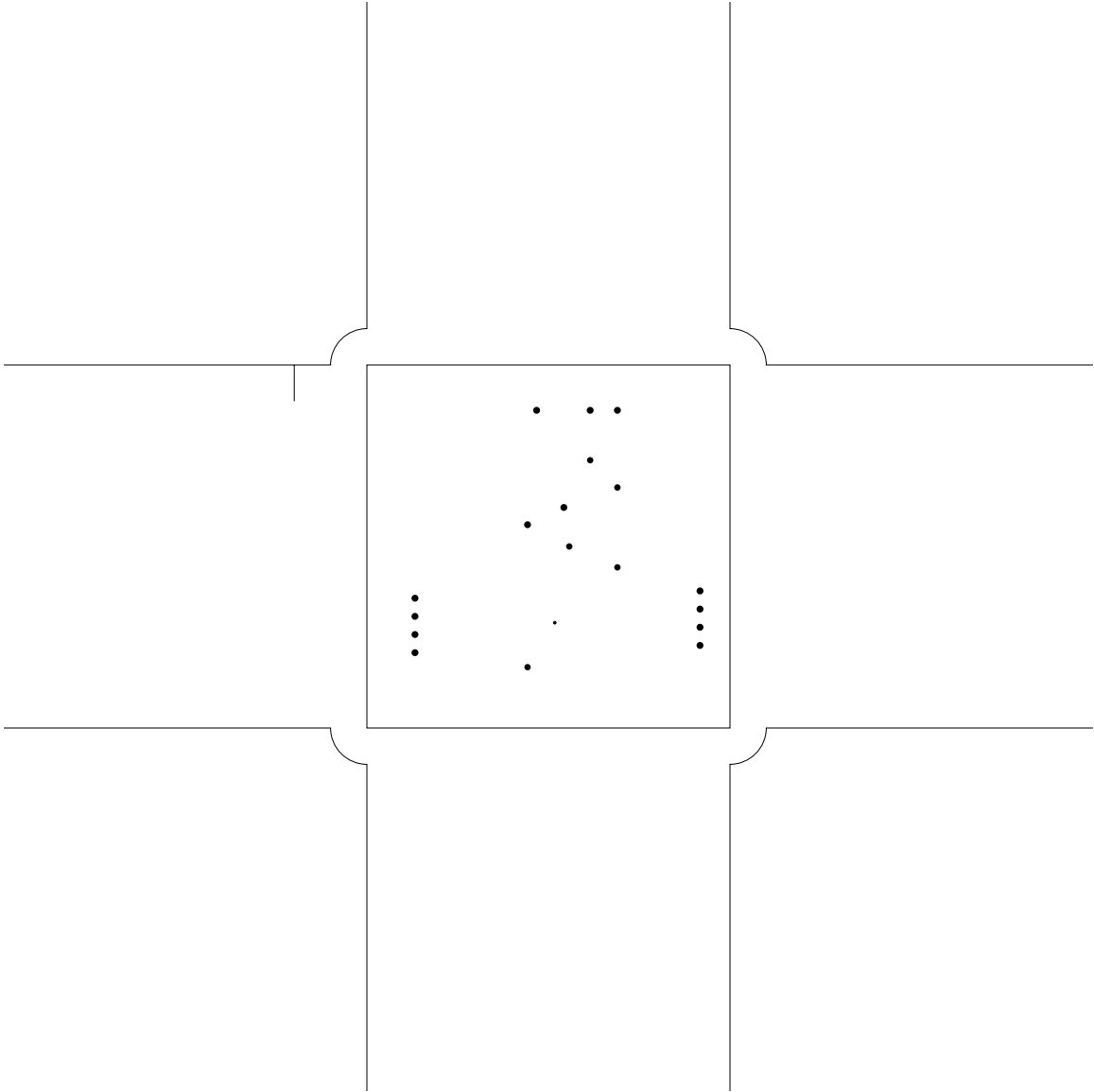
2. component
3. solder
4. componentmask
5. soldermask
6. plated-drill
7. topsilk
8. bottomsilk
9. toppaste
10. topassembly
11. bottomassembly
12. fab

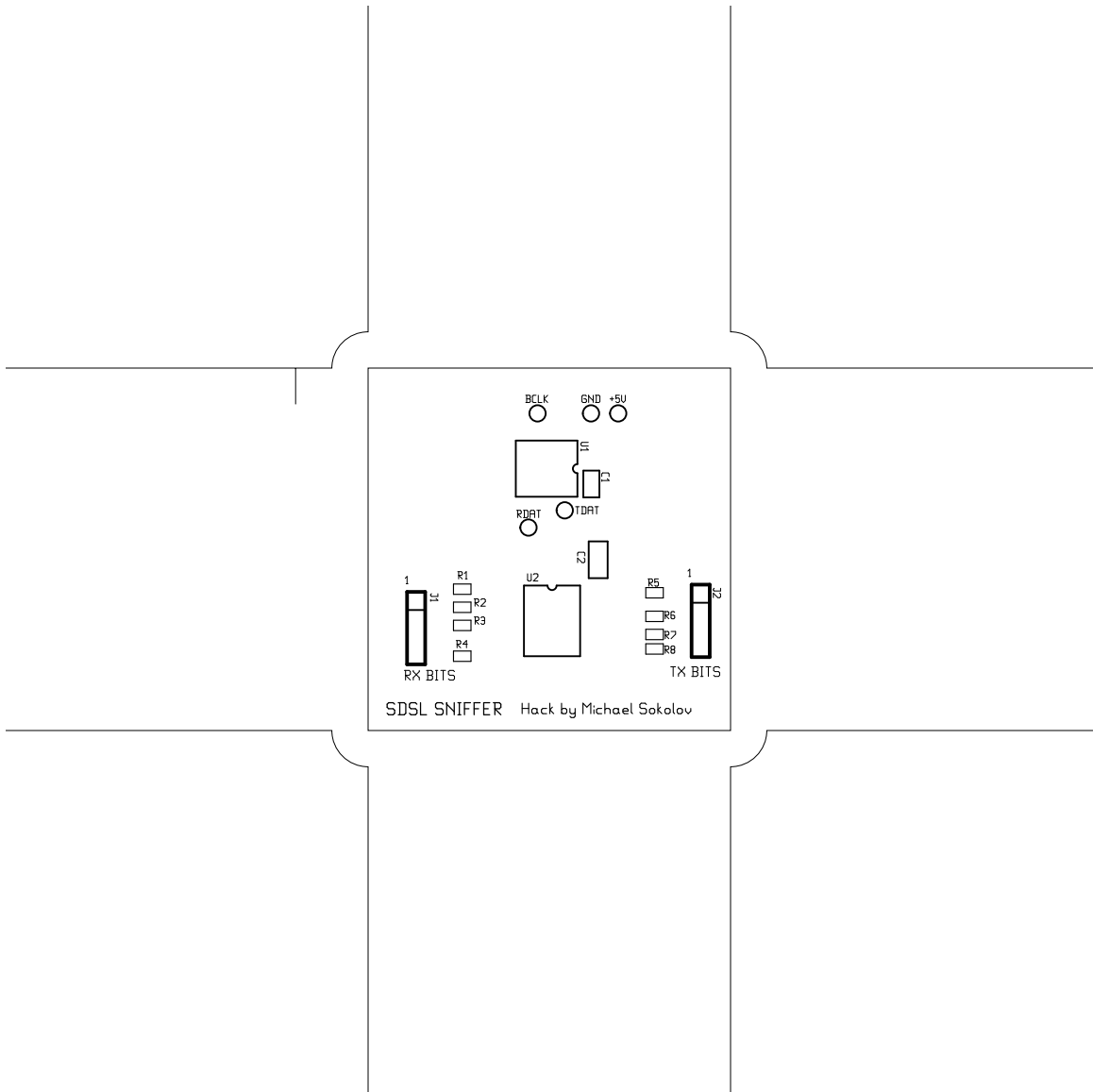


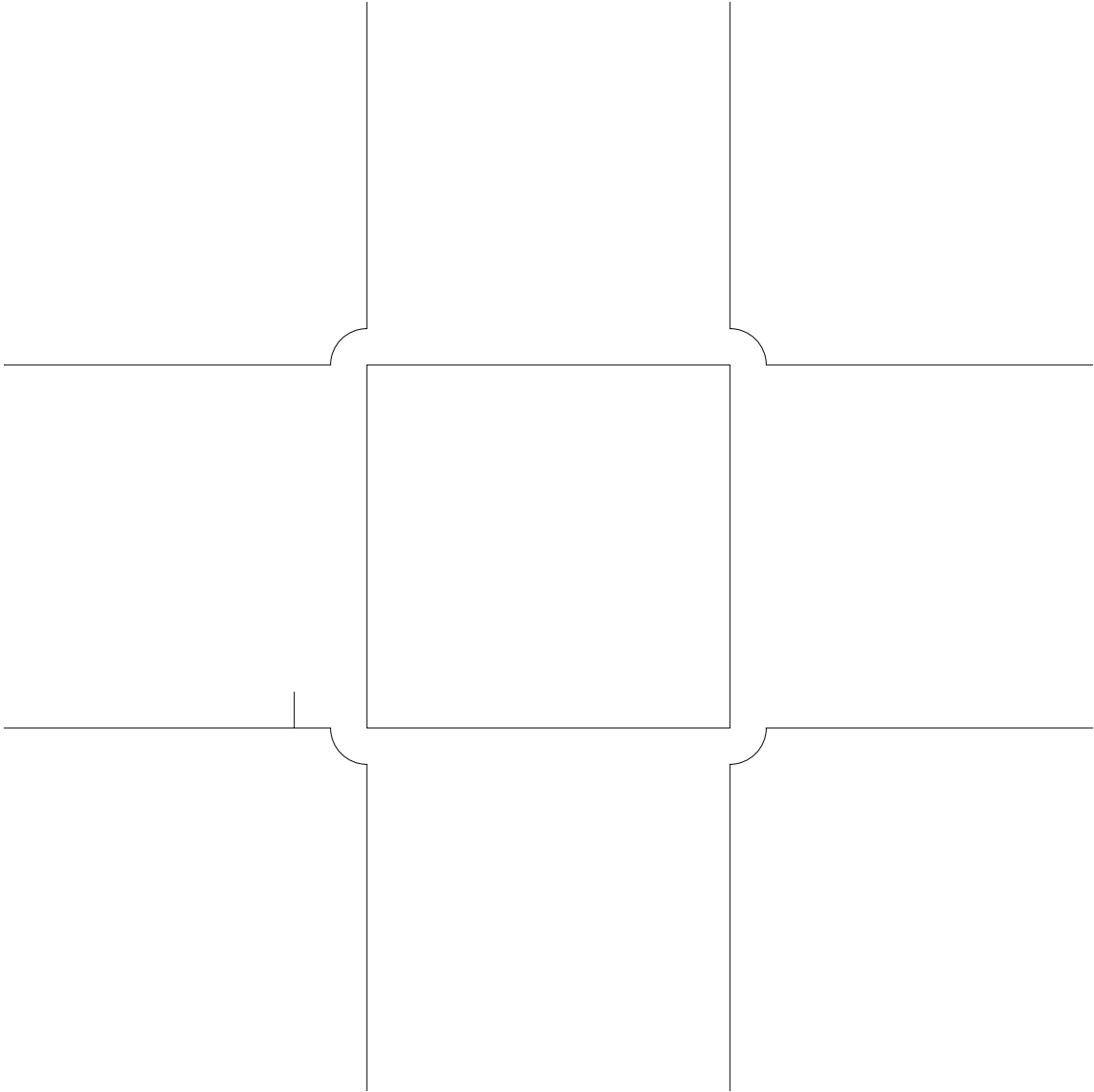


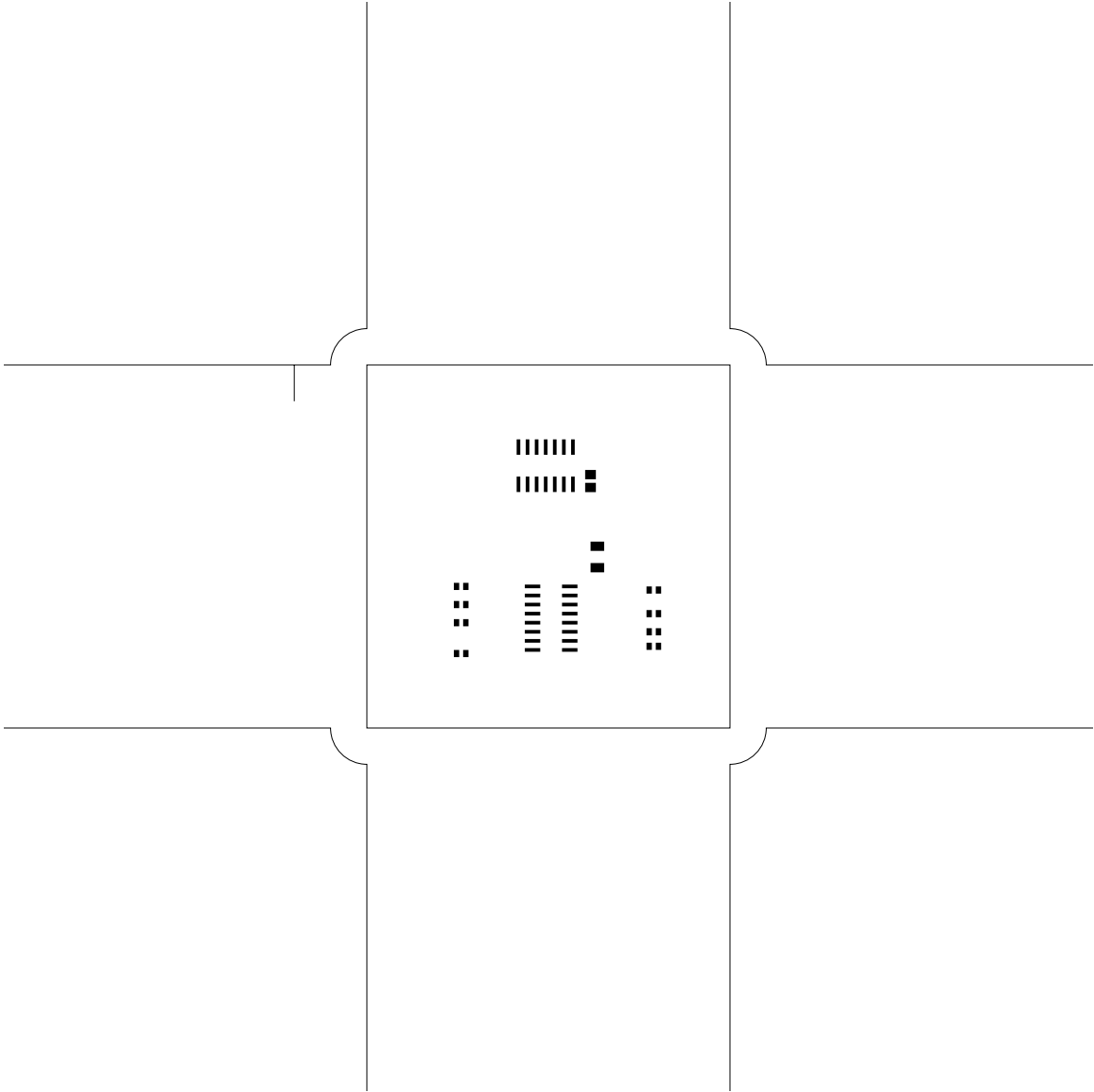


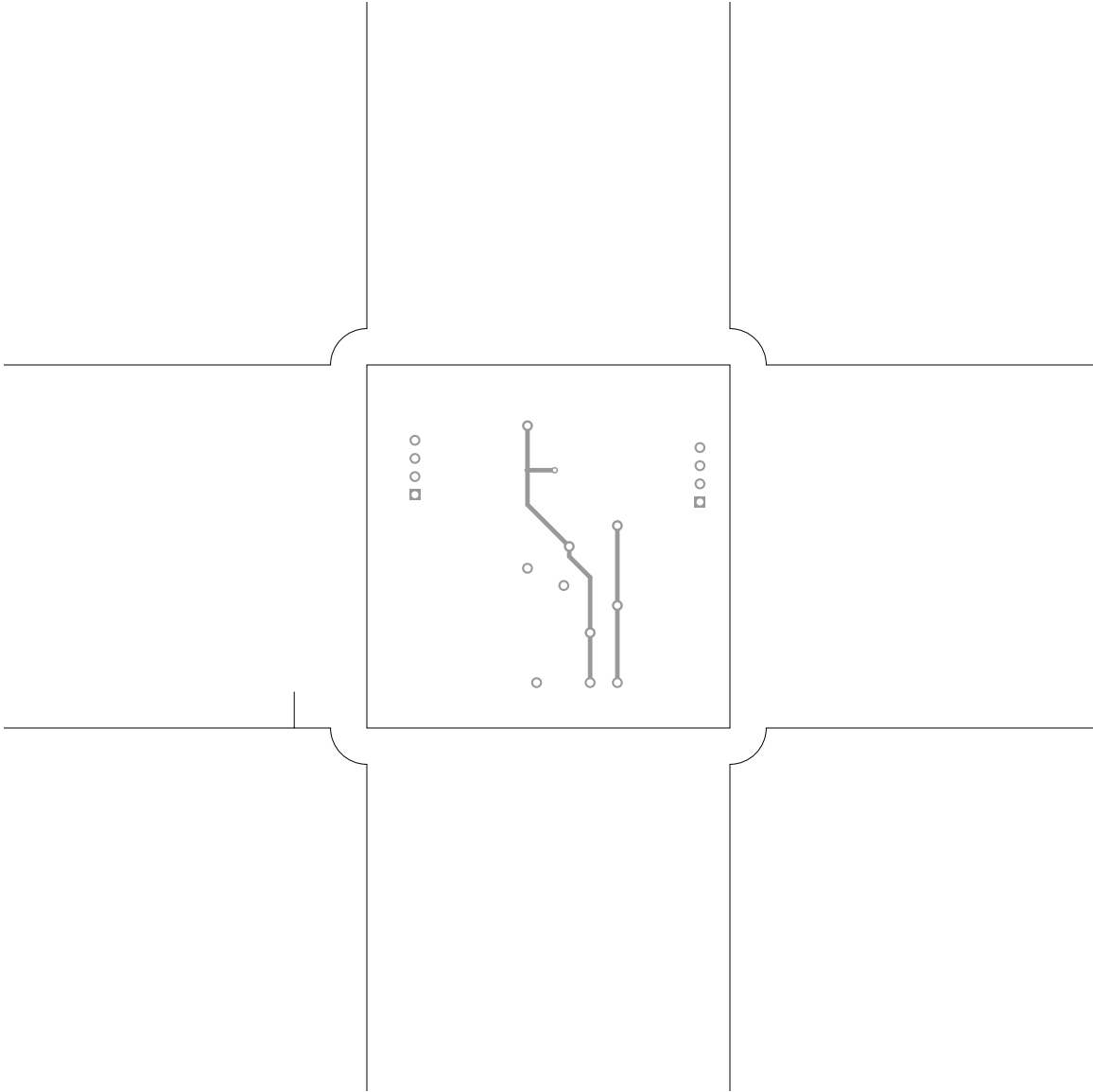












There are 3 different drill sizes used in this layout, 19 holes total

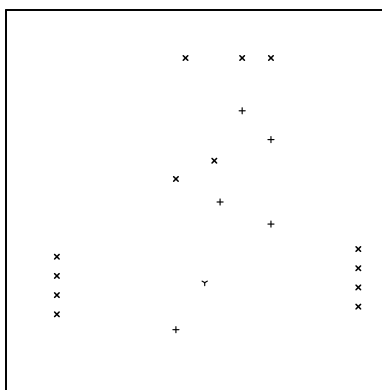
Symbol	Diam. (Inch)	Count	Plated?
γ	<u>0.020</u>	<u>1</u>	<u>YES</u>
+	<u>0.035</u>	<u>5</u>	<u>YES</u>
x	<u>0.038</u>	<u>13</u>	<u>YES</u>

Title: bpsniffer - Fabrication Drawing

Author: Michael Sokolov

Date: Sun Dec 27 03:29:00 2009 UTC

Maximum Dimensions: 2000 mils wide, 2000 mils high



Board outline is the centerline of this 10 mil rectangle - 0,0 to 2000,2000 mils